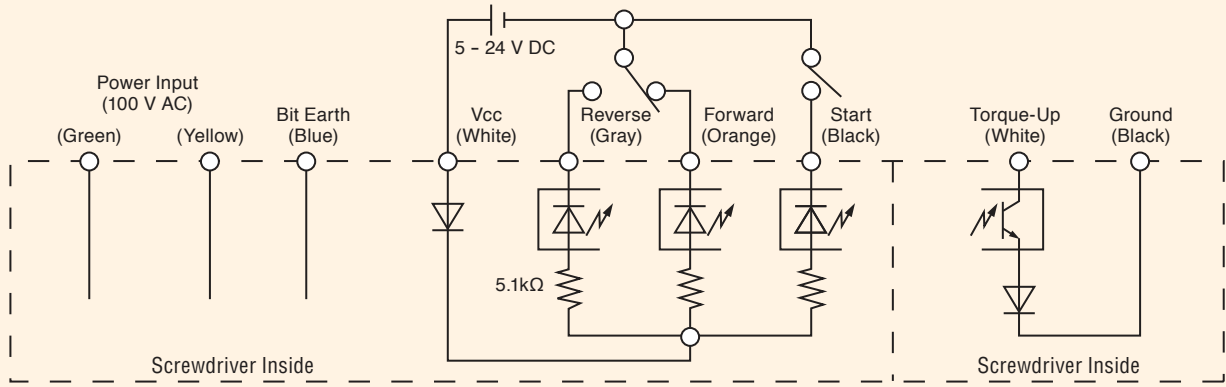


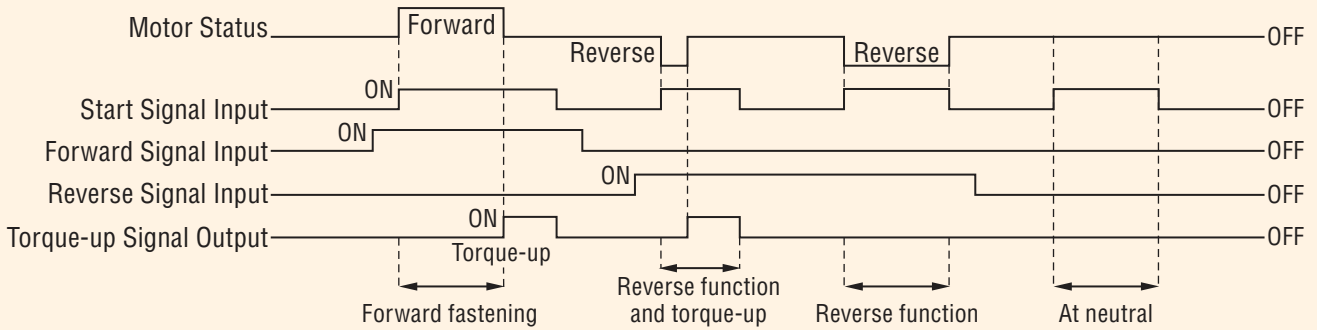
Power Input / Output Signal Schematic Diagram



⚠ Caution

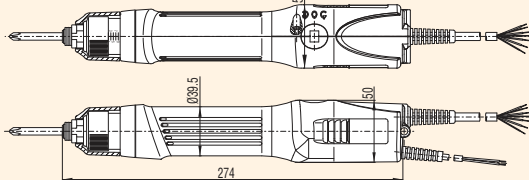
- Each input/output signal is insulated from a screwdriver's internal circuit.
- Input signal rated range: Use in the range of voltage between 5 – 24 V DC (current 0.5 – 5 mA DC)
- Torque-up signal output maximum rating: Use in the range of voltage under 30 V DC and current 20 mA DC.

Operation Timing Chart

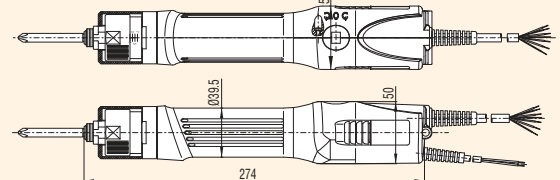


External Dimensions

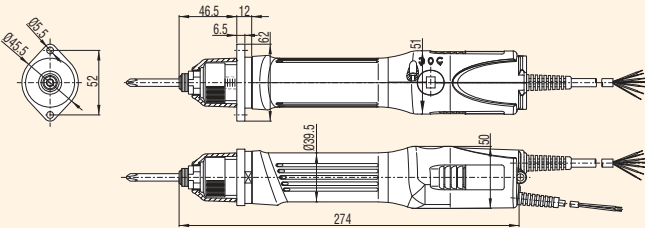
DLV30LAN/SAN/HAN-DJN



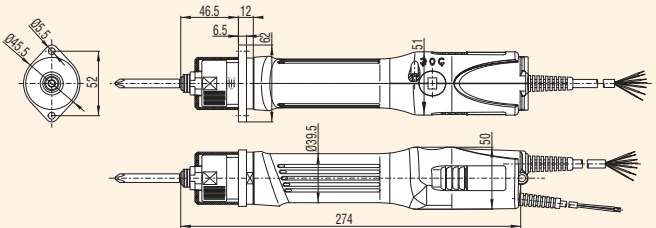
DLV45LAN/SAN-DKN DLV70LAN-DKN



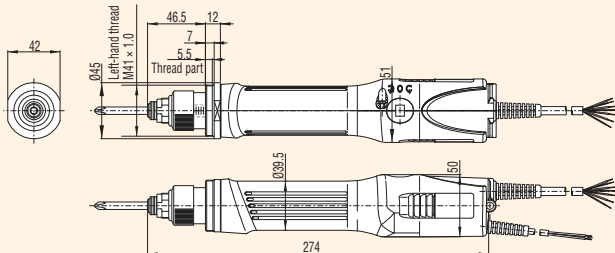
DLV30LAF/SAF/HAF-DJN



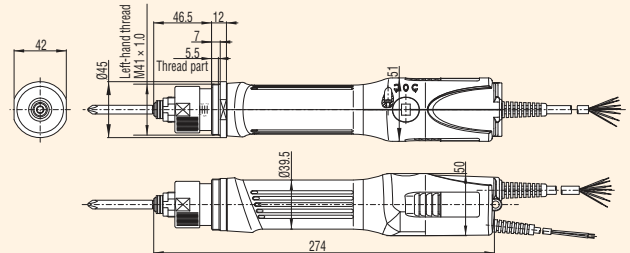
DLV45LAF/SAF-DKN DLV70LAF-DKN



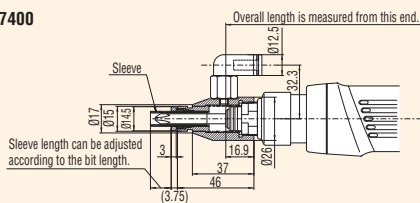
DLV30LAM/SAM/HAM-DJN



DLV45LAM/SAM-DKN DLV70LAM-DKN



DLP7400



Unit: mm