

HAKKO Original Ferrule Fittings / New Variation of Ferrule Fittings!

# EIGHTLOCK FERRULE Fittings

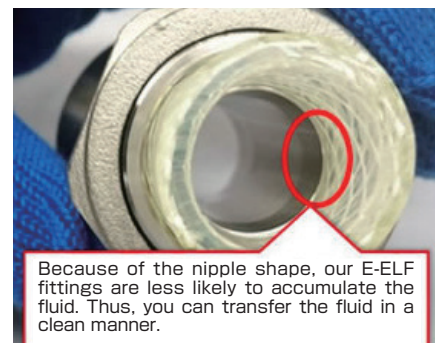
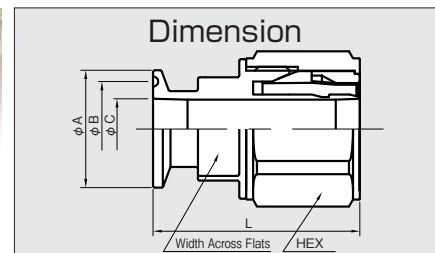
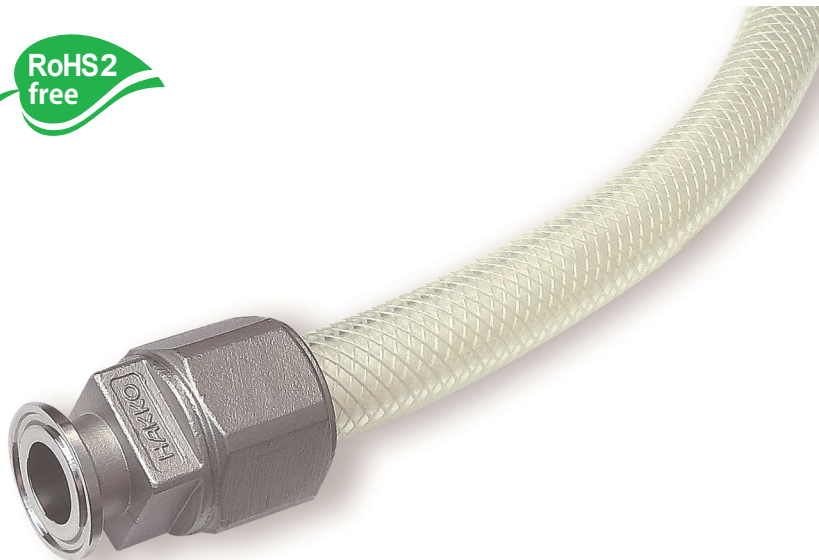
[Model Number: E-ELF-(I.D.)-(Ferrule Size)]

## Applications

EIGHTLOCK FERRULE is original fitting for HAKKO hoses.  
EIGHTLOCK FERRULE is a fitting designed for HAKKO Hose [Applicable Hose Model Number: E-PDB、E-SJB、E-SJSP、E-SJSD、E-TB、E-STB、E-SF、E-KYS、and E-KYC].

## Specification

Material Body : SCS16 (Equivalent to SUS316L)、Ring Nut : SCS13 (Equivalent to SUS304)  
Sleeve : POM



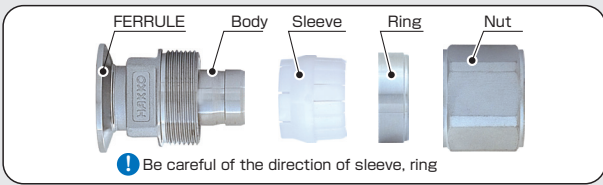
Model Number	Applicable Hose Size	Fitting Size	Dimensions (mm)						Product Weight	Sleeve Code
	I.D. × O.D. (mm)		A	B	C	L	Width Across Flats	HEX	Gram/Place	
E-ELF-19-15A	19×26	15A	34	27.5	17.5	60	30	41	318	E-EL-19-SL
E-ELF-19-1S		1S	50.5	43.5	23	60	30	41	354	
E-ELF-25-1S	25×33	1S	50.5	43.5	23	67	36	46	470	E-EL-25-SL
E-ELF-32-1.5S	32×41	1.5S	50.5	43.5	35.7	80	46	55	665	E-EL-32-SL

## Characteristics & Functions

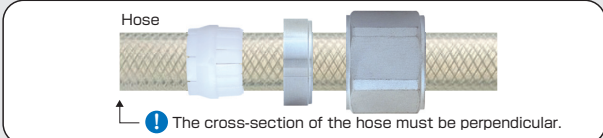
- **Possible to Reuse the Fittings**...Since E-ELF is a nut type ferrule fittings, it is easy to install at site. When you replace a hose, you can reuse a fitting.
- **Sanitary Fittings**...Because of the nipple shape, our E-ELF fittings are less likely to accumulate the fluid. Thus, you can transfer the fluid in a clean manner. Also, the material of the fitting is SCS16 (equivalent to SUS316L = Wetted Surface) has higher levels of corrosion resistance.
- **Non-Rubber Packing**...Since the inner layer is flat and does not use the rubber packing, there is no elution from the packing. The material of the wetted part is SCS16(equivalent to SUS316L), which shows resistance against food, chemicals, and solvents.

# Explanations on How to install

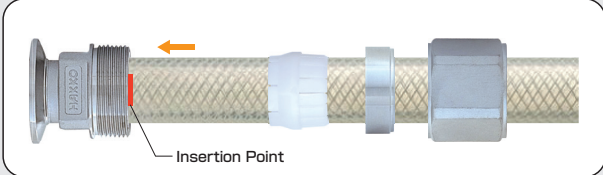
In order to standardize, we recommend you to compile the installation process in a manual.



1 Pass the nut, ring, and sleeve through the hose.



2 Insert the hose into the nipple. Make sure that the hose reaches the root of the nipple.



(a) Insertion Point

\* Before inserting the hose, please write down the mark on the hose. So, you can insert the hose end into a nipple for sure.

<Insertion Point for Each Hose Size>

Model Number	Insertion Point (a)
E-ELF-19-15A	11 mm
E-ELF-19-1S	11 mm
E-ELF-25-1S	13 mm
E-ELF-32-1.5S	16 mm

3 Securely fasten the nut.



- Standardization on Site ●Non-Rubber Packing Seal
- Possible to use HAKKO Laminated Structure Hose
- EIGHTLOCK FERRULE FITTINGS are reusable except the sleeve.

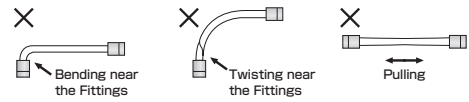
## EIGHTLOCK FERRULE FITTINGS-A Chart for Hose and Joint Sizes

	Model Number	I.D. × O.D. mm	Fitting Model	Working Pressure (MPa)		Temperature Range ℃
				20℃	80℃	
Flexible Fluorine (PVDF) Resin Yarn Reinforced Hose	E-PDB-19	19 × 26	E-ELF-19-15A E-ELF-19-1S	0 ~ 1.0	0 ~ 0.5	-20 ~ 80
	E-PDB-25	25 × 33	E-ELF-25-1S	0 ~ 0.5	0 ~ 0.3	
	E-PDB-32	32 × 41	E-ELF-32-1.5S	0 ~ 0.5	0 ~ 0.25	
Flexible Fluorine (ETFE) Resin Yarn Reinforced Hose	E-SJB-19	19 × 26	E-ELF-19-15A E-ELF-19-1S	0 ~ 1.0	0 ~ 0.5	-20 ~ 80
	E-SJB-25	25 × 33	E-ELF-25-1S	0 ~ 0.5	0 ~ 0.3	
	E-SJB-32	32 × 41	E-ELF-32-1.5S	0 ~ 0.5	0 ~ 0.25	
Flexible Fluorine (ETFE) Resin SUS Spring Wire Hose	E-SJSP-19	19 × 26	E-ELF-19-15A E-ELF-19-1S	-0.1 ~ 0.4	-0.1 ~ 0.2	-20 ~ 80
	E-SJSP-25	25 × 33	E-ELF-25-1S	-0.1 ~ 0.3	-0.1 ~ 0.15	
	E-SJSP-32	32 × 41	E-ELF-32-1.5S	-0.1 ~ 0.3	-0.1 ~ 0.15	
Flexible Fluorine (ETFE) Resin SUS Spring Wire Hose (Dissipative Type)	E-SJSD-19	19 × 26	E-ELF-19-15A E-ELF-19-1S	-0.1 ~ 0.4	-0.1 ~ 0.2	-20 ~ 80
	E-SJSD-25	25 × 33	E-ELF-25-1S	-0.1 ~ 0.4	-0.1 ~ 0.2	
				60℃		
PRESSURE HOSE	E-TB-19	19 × 26	E-ELF-19-15A E-ELF-19-1S	0 ~ 1.0	0 ~ 0.6	0 ~ 60
	E-TB-25	25 × 33	E-ELF-25-1S	0 ~ 0.5	0 ~ 0.35	
	E-TB-32	32 × 41	E-ELF-32-1.5S	0 ~ 0.5	0 ~ 0.35	
Oil-Proof PRESSURE HOSE	E-STB-19	19 × 26	E-ELF-19-15A E-ELF-19-1S	0 ~ 1.0	0 ~ 0.6	0 ~ 60
	E-STB-25	25 × 33	E-ELF-25-1S	0 ~ 0.5	0 ~ 0.35	
	E-STB-32	32 × 41	E-ELF-32-1.5S	0 ~ 0.5	0 ~ 0.35	
				70℃		
KY COIL HOSE	E-KYC-19	19 × 26	E-ELF-19-15A E-ELF-19-1S	-0.1 ~ 0.4	-0.1 ~ 0.2	0 ~ 70
SUNFOODS HOSE	E-SF-19	19 × 26	E-ELF-19-15A E-ELF-19-1S	0 ~ 1.0	0 ~ 0.4	0 ~ 70
	E-SF-25	25 × 33	E-ELF-25-1S	0 ~ 0.5	0 ~ 0.3	
	E-SF-32	32 × 41	E-ELF-32-1.5S	0 ~ 0.5	0 ~ 0.3	
				40℃		
KY SUNFOODS HOSE	E-KYS-19	19 × 26	E-ELF-19-15A E-ELF-19-1S	0 ~ 0.4	0 ~ 0.2	0 ~ 40
	E-KYS-25	25 × 33	E-ELF-25-1S	0 ~ 0.4	0 ~ 0.2	
	E-KYS-32	32 × 41	E-ELF-32-1.5S	0 ~ 0.4	0 ~ 0.2	

\* Be careful that working pressure and temperature range of KY SUNFOODS HOSE equipped with EIGHTLOCK FERRULE are not the same as those of KY SUNFOODS HOSE without EIGHTLOCK FERRULE.

**Precautions for Use :** HAKKO is not liable for personal injury or property damages if you do not follow the cautionary instructions below. We strongly urge you to follow these regulations.

1. Please use our EIGHTLOCK FERRULE FITTINGS to the following hoses only. Please do not use for other hoses, which might cause leaking, coming off from the fittings, and bursting.
  - Flexible Fluorine (PVDF) Resin Yarn Reinforced Hose [E-PDB] ○ Flexible Fluorine (ETFE) Resin Yarn Reinforced Hose [E-SJB] ○ Flexible Fluorine (ETFE) Resin SUS Spring Wire Hose [E-SJSP] ○ Flexible Fluorine (ETFE) Resin SUS Spring Wire Hose (Dissipative Type) [E-SJSD] ○ PRESSURE HOSE [E-TB] ○ Oil-Proof PRESSURE HOSE [E-STB] ○ SUNFOODS HOSE [E-SF] ○ KY SUNFOODS HOSE [E-KYS] ○ KY COIL HOSE [E-KYC]
2. When you use for the first time, please wash out our fittings carefully. (We do not sterilize fittings at all when we shipped out from our warehouse.)
3. After using, please make sure to clean up the fittings without any remainings left. If you leave the fittings with any remainings, it might cause the bacteria to grow or occur the deterioration due to the corrosion.
4. When you use E-ELF for transferring food, please do not soak fittings and hoses into the fluid. Due to the leftover, this might cause the bacteria to grow. As a result, the fittings corrode.
5. In cutting the hose, the cross-section of the hose must be perpendicular.
6. When you install E-ELF with the hose, please do not warm the hose with fire.
  - When you install hose with fittings (such as installing a hose and tightening a nut), please conduct this at room temperature (20℃ ± 10℃). When you install at low temperature, the thread portion of the fittings is likely to gall. On the other hand, when you install at high temperature, this might lower the pressure resistance.
7. When you reuse E-ELF, please do not use a cutter or knife in taking the hose off. This might damage the nipple of the fittings. Please cut the hose shortly and take it off by a pair of pliers. Also, if you find any damages or burr on the surface of the nipple, please do not reuse the fittings. This damages the surface of the hose and leads to the bursting and leaking. Please check whether or not the body and the nut do not have any problems. If there are any problems, please stop using the fittings.
8. When you install a hose, please make sure the insertion point and the directions of ring and sleeve.
9. Please do not bend extremely near the fittings. Please do not apply unreasonable force such as kinking or pulling to the hoses. These result in the bursting or twisting of the hose or coming off from the fittings.
10. Since hoses contract or extend due to the inner pressure, hoses should be installed with adequate space.
11. For KY SUNFOODS HOSE, be careful that working pressure and temperature range of KY SUNFOODS HOSE equipped with EIGHTLOCK FERRULE FITTINGS are not the same as those of KY SUNFOODS HOSE without EIGHTLOCK FERRULE FITTINGS.
12. When you reuse EIGHTLOCK FERRULE FITTINGS, please use a new sleeve. Sleeve is NOT reusable.
13. The conditions of the hoses and fittings should be inspected regularly. If something unusual things listed below occur, stop using the hoses immediately and replace them with new ones:
  - Abnormal Appearance...Tear, Scratches, Swelling, Crack, Deformation, and Exposure of Reinforced Yarnsw due to Abrasion
  - The Bursting of Inner or/and Outer Layers of the Hoses, Hardening, Dramatic Change in Color, and Leaking Fluids



\* In terms of Chemical Resistance, please refer to "Chemical Resistance Data" available on our webpage and product catalog.

Contact us if you have any inquiries about HAKKO products.

**HAKKO**  
CORPORATION

**HAKKO CORPORATION**  
**HEAD OFFICE / SALES DEPARTMENT**  
 Unity Forum 5F, 42-18, 1-Chome Itabashi, Itabashi-Ku, Tokyo 173-0004, Japan  
 TEL (81) 3-3963-5381 FAX (81) 3-3961-4400

**OSAKA OFFICE**  
 Akatsuki Building 7F, 13-45, Toyotsu-cho, Suita-shi, Osaka 564-0051, Japan  
 TEL (81) 6-6310-6880

**SAITAMA FACTORY · AKITA FACTORY**  
 URL: <https://eightron.co.jp/English>