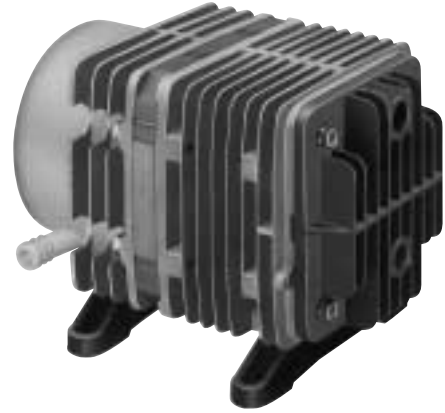


LINEAR

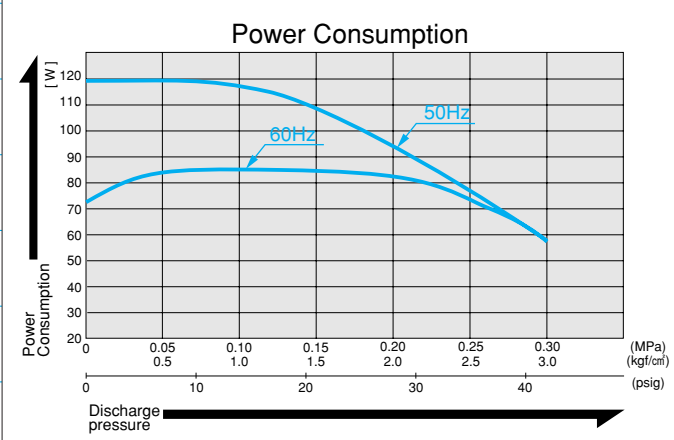
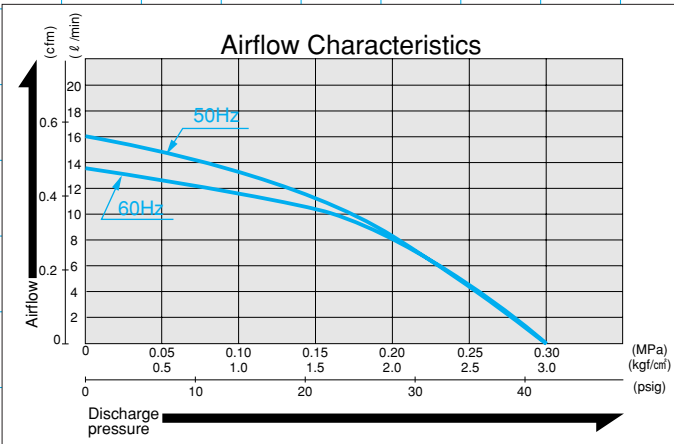
Ac0920



MOTOR FREE
PISTON SYSTEM



Airflow & Power Consumption

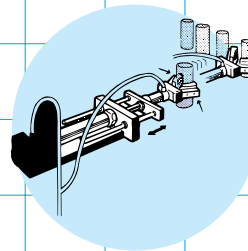


Specifications

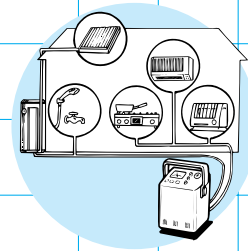
	(SI)	(EURO)	(U.S.A.)
Rated Pressure	0.2 MPa (2.0 kgf/cm ²)	2.0 bar	28.4 psig
Rated Airflow	8 l/min		0.28 cfm
Rated Voltage	115 V, AC or 230 V, AC		
Maximum Pressure	0.3 MPa (3.0 kgf/cm ²)	3.0 bar	42.6 psig
Power Consumption	80 W or 100 W		
Rated Frequency	60 Hz or 50 Hz		
Life Expectancy	3,000 hours		
Outlet	ISO Rc 1/4 (female threaded)		
Duty Cycle	30 minutes		
Coil Insulation Class	E or its equivalent (JETL)		
Mounting Dimensions	102 (L) x 130 (W) mm		
Gross Weight	5 kg	11 Lbs.	
Leadwire Length	150 mm	5-7/8" for 115V	

* Life expectancy is the expected accumulated period of time during which the compressor will maintain the above specifications. Contact your supplier for details of the conditions of use under which the values and numbers stated herein are maintained.

Application Examples



Air Cylinder/Chuck Driver



Leakage Tester

Sketch Drawing and Mounting Dimensions Diagram (mm)

