

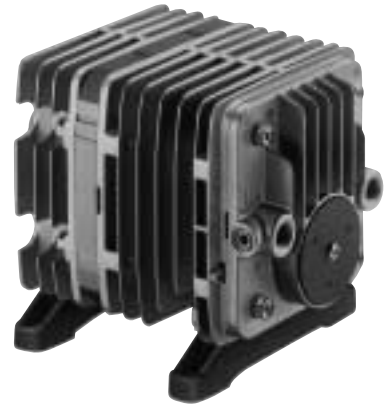
LINEAR

VP0935A

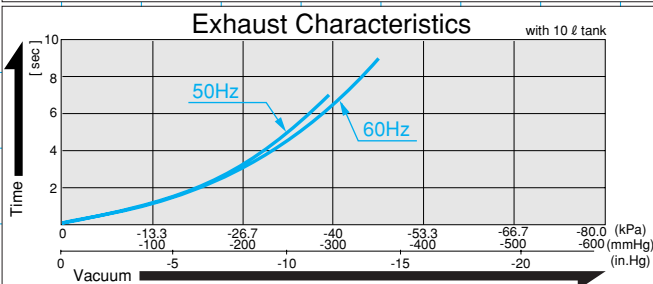
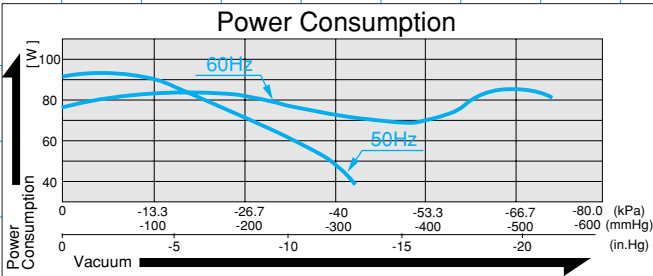
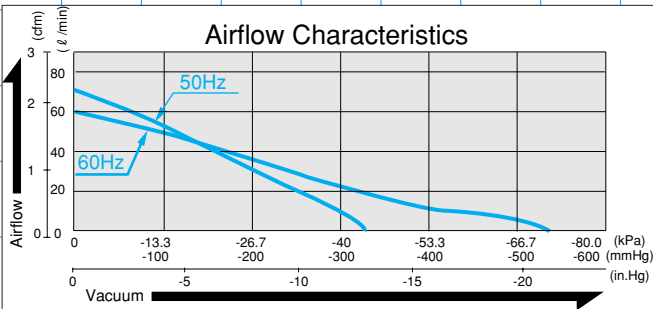


MOTOR FREE
PISTON SYSTEM

Made-to-order VACUUM PUMP



Airflow & Power Consumption



Specifications

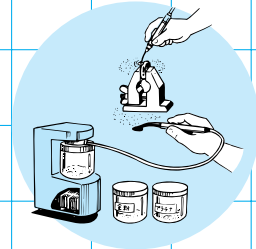
	(SI)	(EURO)	(U.S.A.)
Attainable Vacuum	-44 kPa (-330 mmHg)	-440 mbar	-13 in.Hg
Free Air Displacement	60 l/min		2.12 cfm
Rated Voltage	115 V, AC or 230 V, AC		
Power Consumption	95 W		
Rated Frequency	60 Hz & 50 Hz		
Life Expectancy	10,000 hours		
Inlet	ISO Rc 1/4 (female threaded)		
Outlet	ISO Rc 1/4 (female threaded)		
Duty Cycle	Continuous		
Coil Insulation Class	B or its equivalent (JETL) or B for UL		
Mounting Dimensions	102 (L) x 130 (W) mm		
Gross Weight	4.4 kg		9.7 Lbs.
Leadwire Length	200 mm		7-7/8"

* Life expectancy is the expected accumulated period of time during which the compressor will maintain the above specifications. Contact your supplier for details of the conditions of use under which the values and numbers stated herein are maintained.

Application Examples



Drafter Sheet Suction



Metal Powder Recycling

Sketch Drawing and Mounting Dimensions Diagram (mm)

