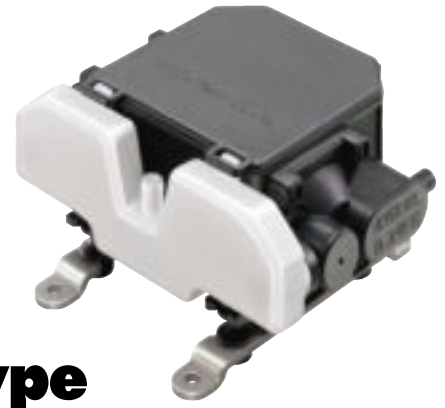


DIAPHRAGM PUMP

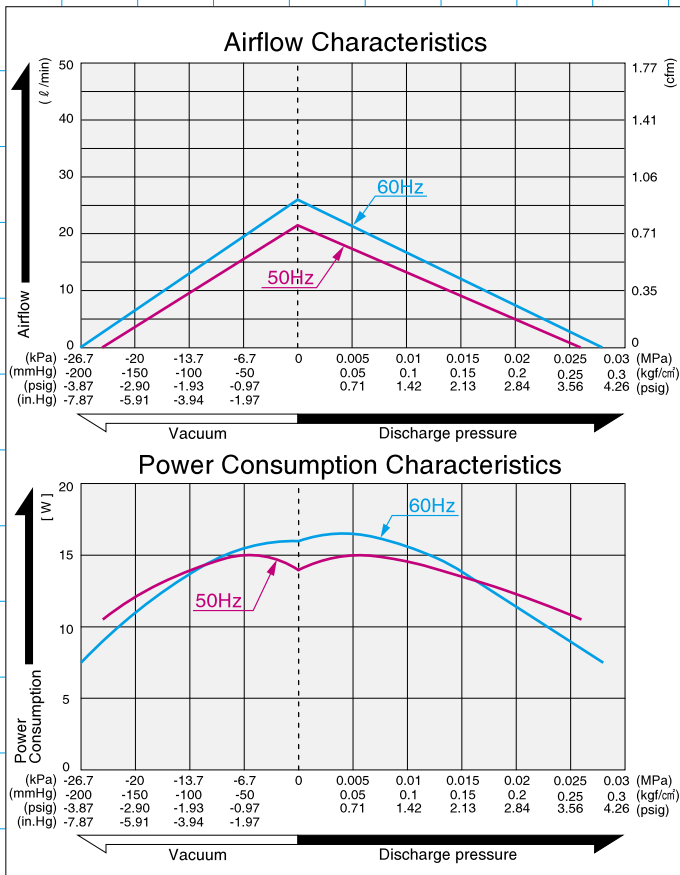
DIAPHRAGM PUMP



vc0101s Dual Type

Airflow & Power Consumption

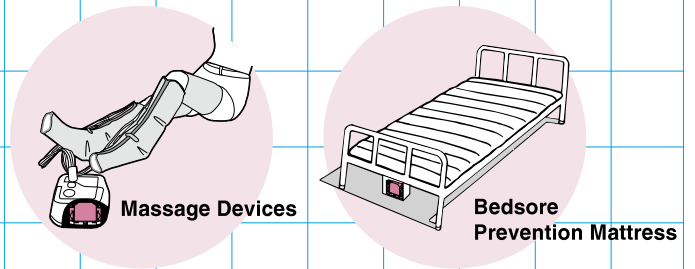
Specifications



VC0101S	(SI)	(EURO)	(U.S.A.)
Rated Pressure	0.005 MPa {0.05 kgf/cm ² }	0.05 bar	0.71 psig
Rated Airflow	15 l/min		0.53 cfm
Rated Voltage	120 V AC* or 230 V AC		
Maximum Pressure	0.026 MPa {0.26 kgf/cm ² }	0.26 bar	3.70 psig
Maximum Vacuum	-24 kPa {-180mmHg}	-240 mbar	-7.08 in.Hg
Power Consumption	15W		
Rated Frequency	60 Hz or 50 Hz		
Life Expectancy	5,000 hours		
Working Pressure Range	-24kPa~0.026 MPa {-180mmHg~0.26 kgf/cm ² }	-240 mbar~ 0.26 bar	-7.08 in.Hg~3.70 psig
Outlet (Inlet)	7.5 mm O.D. hose nipple		
Duty Cycle	60 minutes		
Coil Insulation Class	B or its equivalent (JETL)		
Mounting Dimensions	66 (L) x 100 (W) mm	2-19/32" (L) x 3-15/16" (W)	
Gross Weight	0.82 kg	1.8 Lbs.	
Leadwire Length	300 mm	11-13/16"	

*120V AC UL version is unavailable.
Please read the page of "How to Use This Catalog" first for correct use of compressors and pumps.

Application Examples



Sketch Drawing and Mounting Dimensions Diagram (mm)

