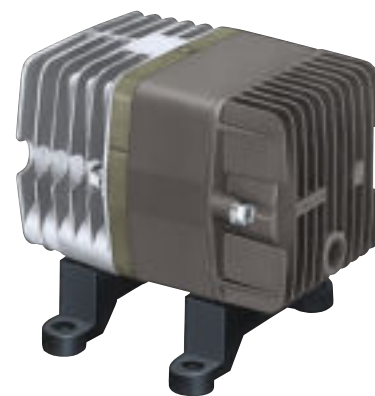


COMPRESSOR

LINEAR



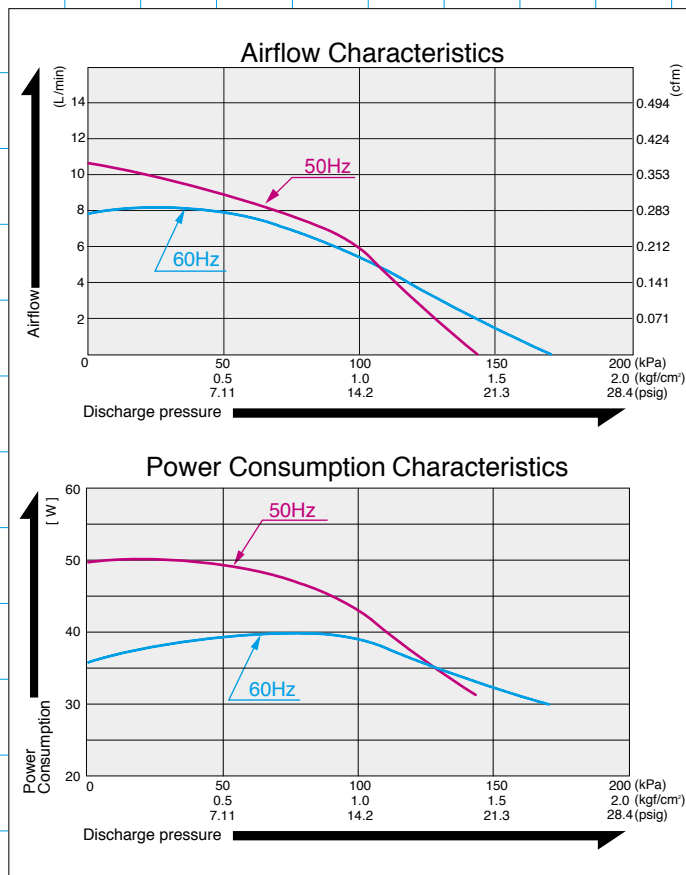
MOTOR FREE
PISTON SYSTEM



Ac0410A

Airflow & Power Consumption

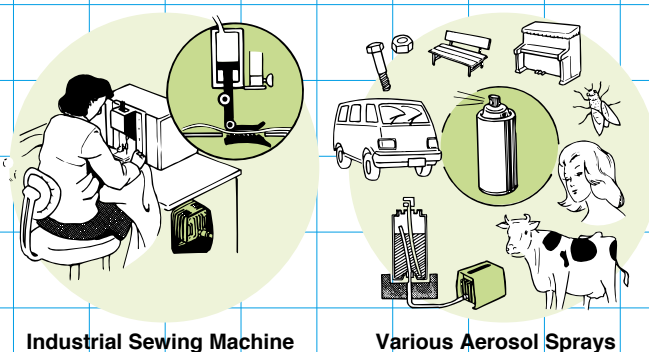
Specifications



	(SI)	(EURO)	(U.S.A.)
Rated Pressure	100 kPa {1.0 kgf/cm ² }	1.0 bar	14.2 psig
Rated Airflow	5 L/min		0.177 cfm
Rated Voltage	115 V AC or 230 V AC		
Maximum Pressure	130 kPa {1.3 kgf/cm ² }	1.3 bar	18.5 psig
Power Consumption	39 W or 43 W		
Rated Frequency	60 Hz or 50 Hz		
Life Expectancy	3,000 hours		
Outlet	ISO Rc 1/4		
Duty Cycle	Continuous		
Coil Insulation Class	E or its equivalent (JETL) or B ^{※1}		
Mounting Dimensions	68 (L) x 98 (W) mm	2-11/16" (L) x 3-7/8" (W)	
Gross Weight	2.1 kg	4.6 Lbs.	
Leadwire Length	170 mm	6-11/16"	

※1: Will apply for UL.
Please read the page of "How to Use This Catalog" first for correct use of compressors and pumps.

Application Examples



Sketch Drawing and Mounting Dimensions Diagram (mm)

