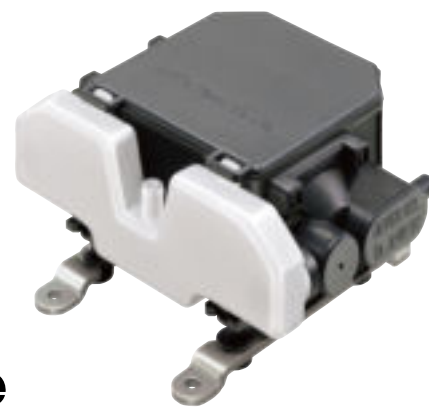


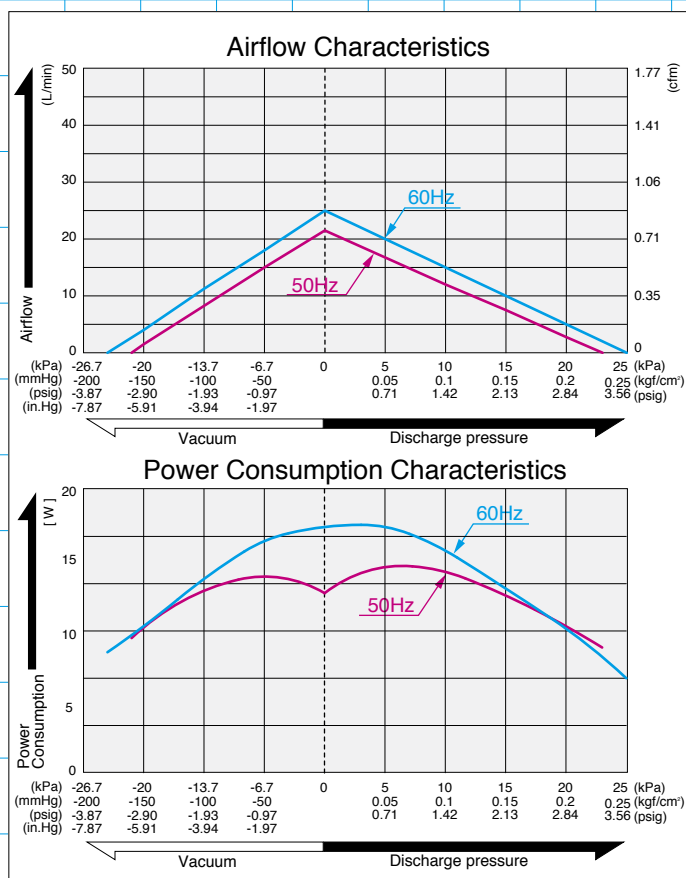
# DIAPHRAGM PUMP

## DIAPHRAGM PUMP



# vc0101 Dual Type

### Airflow & Power Consumption

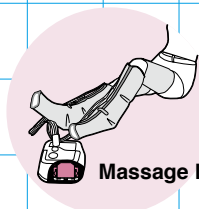


### Specifications

VC0101	(SI)	(EURO)	(U.S.A.)
Rated Pressure	10 kPa (0.1 kgf/cm <sup>2</sup> )	0.1 bar	1.42 psig
Rated Airflow	10 L/min		0.35 cfm
Rated Voltage	120 V AC or 230 V AC		
Maximum Pressure	18 kPa (0.18 kgf/cm <sup>2</sup> )	0.18 bar	2.56 psig
Maximum Vacuum	-18.7 kPa (-140mmHg)	-187 mbar	-5.51 in.Hg
Working Pressure Range	-18.7 kPa - 18 kPa (-140 mmHg - 0.18 kgf/cm <sup>2</sup> )	-187 mbar - 0.18 bar	-5.51 in.Hg-2.56 psig
Maximum Pressure	15 kPa (0.15 kgf/cm <sup>2</sup> )	0.15 bar	2.13 psig
Maximum Vacuum	-10 kPa (-76mmHg)	-100 mbar	-2.95 in.Hg
Working Pressure Range	-10kPa - 15 kPa (-76mmHg - 0.15 kgf/cm <sup>2</sup> )	-100 mbar - 0.15 bar	-2.95 in.Hg-2.13 psig
Power Consumption	11W		
Rated Frequency	60 Hz or 50 Hz		
Life Expectancy	5,000 hours		
Outlet (Inlet)	7.5 mm O.D. hose nipple		
Duty Cycle	Continuous		
Coil Insulation Class	B for 230V & A for 120V or its equivalent		
Mounting Dimensions	66 (L) x 100 (W) mm	2-19/32"(L) x 3-15/16"(W)	
Gross Weight	0.82 kg 1.8 Lbs.		
Leadwire Length	200 mm	7-7/8"	

Please read the page of "How to Use This Catalog" first for correct use of compressors and pumps.

### Application Examples



### Sketch Drawing and Mounting Dimensions Diagram (mm)

