

# MAFR302 series

AIR UNITS (F.R.UNIT)

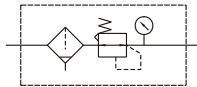


mindman



Option: MP41

### Symbol



### Specification

Model	MAFR302		
Bore No.	8A	10A	15A
Port size	1/4	3/8	1/2
Medium	Air		
Operating pressure range (※)	0.05~1 MPa		
Proof pressure	1.5 MPa		
Effective orifice	32 mm <sup>2</sup>	34 mm <sup>2</sup>	
Regulated pressure range	0.05~0.85 MPa		
Ambient temperature	-5~+60°C (No freezing)		
Filter element	Standard: 5 μm Option: 40 μm		
Attachment	Pressure gauge (PG-20), bracket		
Weight	490 g		

※ 1. Standard unit contains semi-auto-drain function when operating pressure below 0.05 MPa.

※ 2. Choose auto-drain FMRF300, the pressure range is 0.15 ~ 1 MPa.

### Order example

MAFR302 - 8A - D - E1 - □ - □

MODEL

BORE SIZE

8A: 1/4  
10A: 3/8  
15A: 1/2

C: external pressure gauge (PG-40)  
D: auto drain valve (FMRF300)

PRESSURE SWITCH

E1: MP41P-02  
E2: MP41P-02-QD  
E3: MP41P-02-J  
E4: MP41P-02-QD-J  
E5: MP41P-04  
E6: MP41P-04-QD  
E7: MP41P-04-J  
E8: MP41P-04-QD-J

※ Refer to page E-13 for the option of digital pressure switch MP41.

FILTER ELEMENT

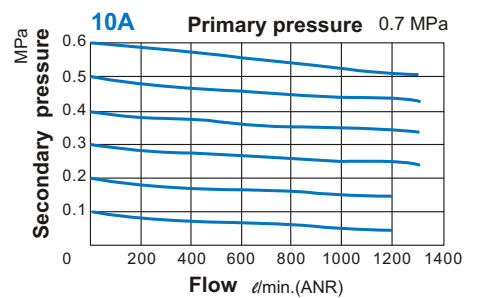
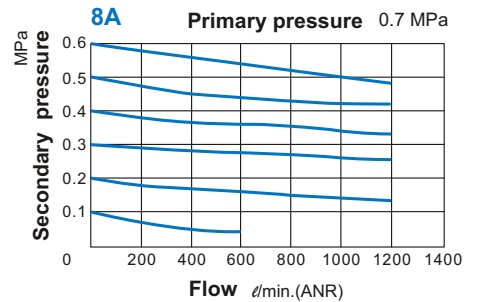
Blank: 5 μm

40u: 40 μm

PORT THREAD

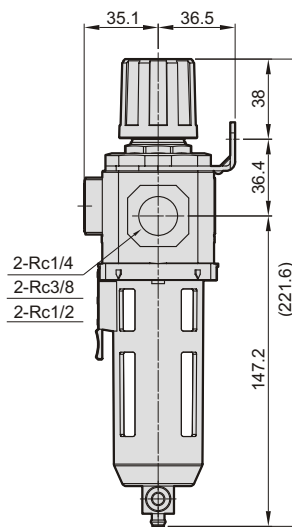
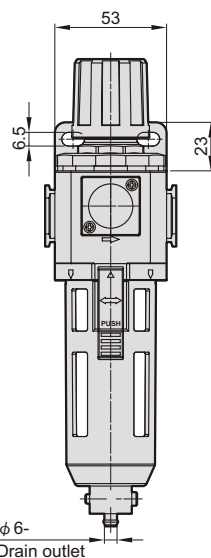
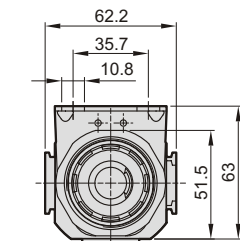
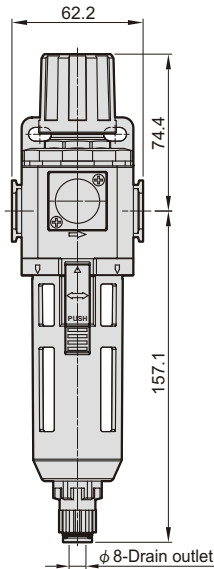
Blank: Rc thread  
G: G thread  
NPT: NPT thread

### Flow feature



### MAFR302-D

Auto drain valve



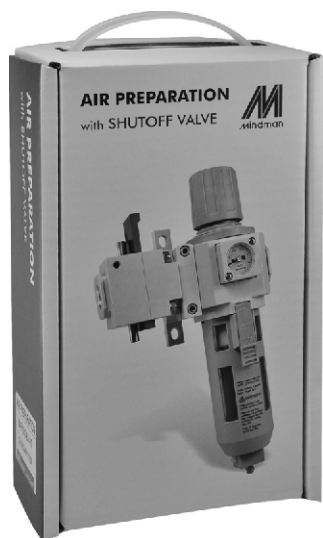
2-Rc1/4  
2-Rc3/8  
2-Rc1/2



mindman

# MAFR302-HT with shutoff valve

AIR UNITS (F.R.UNIT)



## Order example

MAFR302 – 8A – D – E1 – □ – HT – □

MODEL

BORE SIZE

8A: 1/4  
10A: 3/8  
15A: 1/2

C: external pressure gauge (PG-40)  
D: auto drain valve (FMRF300)

PRESSURE SWITCH

E1: MP41P-02  
E2: MP41P-02-QD  
E3: MP41P-02-J  
E4: MP41P-02-QD-J  
E5: MP41P-04  
E6: MP41P-04-QD  
E7: MP41P-04-J  
E8: MP41P-04-QD-J

※ Refer to page E-13 for the option of digital pressure switch MP41.

FILTER ELEMENT

Blank: 5 μm  
40u: 40 μm

SHUTOFF VALVE

HT: MVHT-300-3H

PORT THREAD

Blank: Rc thread  
G: G thread  
NPT: NPT thread

