

MAR401 series

AIR UNITS (R. UNIT)

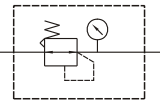


mindman



Option: MP41

Symbol



Specification

Model	MAR401		
Bore No.	8A	10A	15A
Port size	1/4	3/8	1/2
Medium	Air		
Max. operating pressure	1.5 MPa		
Proof pressure	2 MPa		
Regulated pressure range	Standard type: 0.1~0.85 MPa		
	High pressure type: 0.1~1.5 MPa		
Ambient temperature	-5~+60°C (No freezing)		
Attachment	Pressure gauge (PG-20), L-type bracket		
Weight	450 g		

Order example

MAR401 - 8A - [] - []

MODEL

BORE SIZE

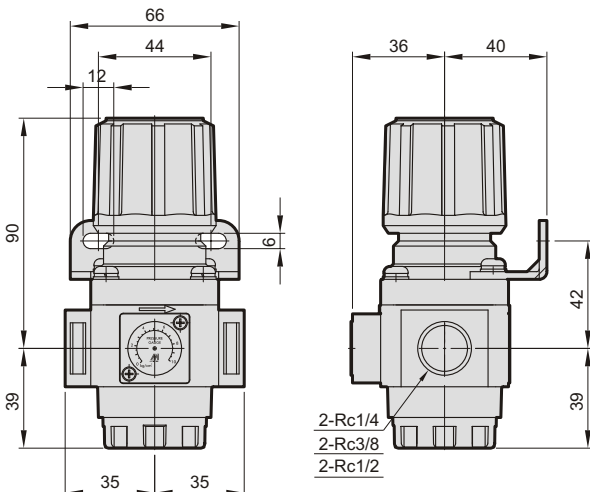
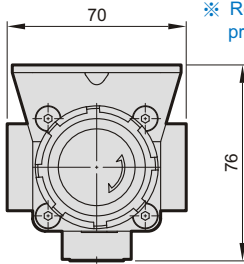
8A: 1/4
10A: 3/8
15A: 1/2

PORT THREAD

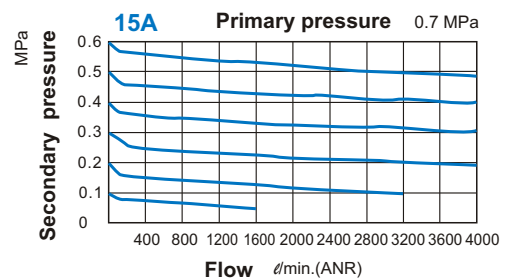
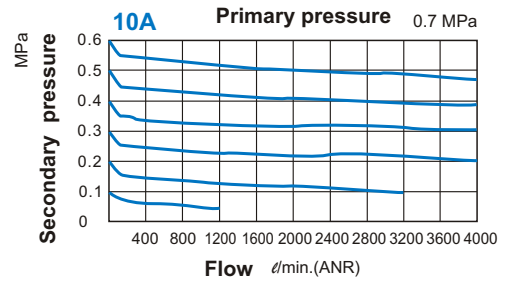
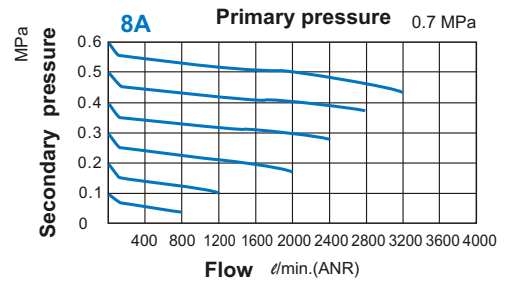
Blank: Rc thread
G: G thread
NPT: NPT thread

C: external pressure gauge (PG-40)
H: high pressure type
(Required with external pressure gauge PG-40)
P: pressure switch(MPS series)

※ Refer to page E-14 for the option of digital pressure switch MP41.



Flow feature



mindman