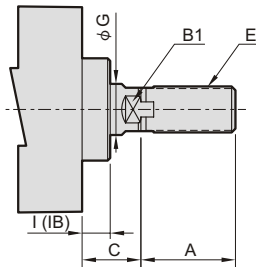


Change of rod end shape

MCQA — Standard model no. — XR01

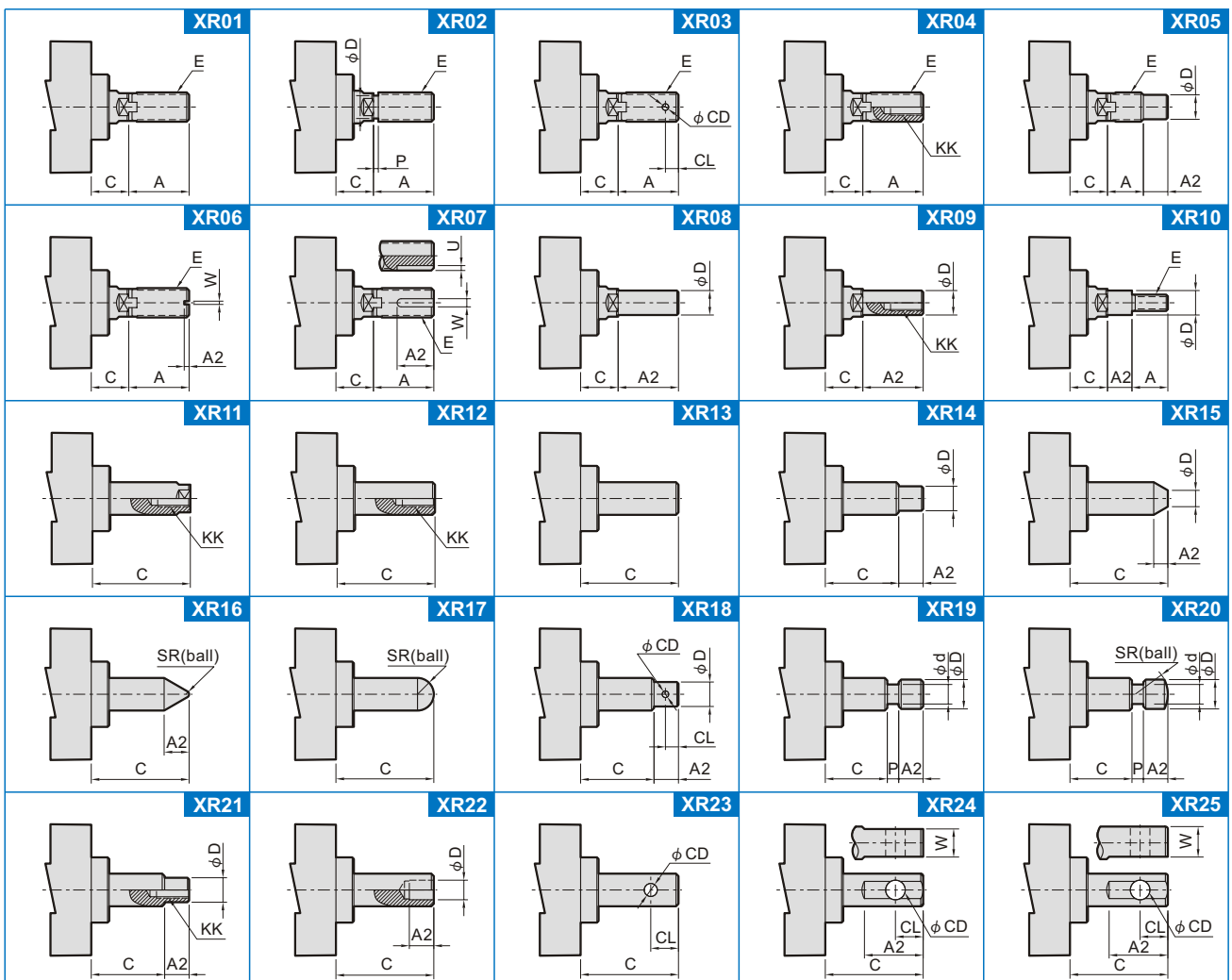
MODEL
MCQA
MCQV2
MCQV
MCQI2

Change of rod end shape



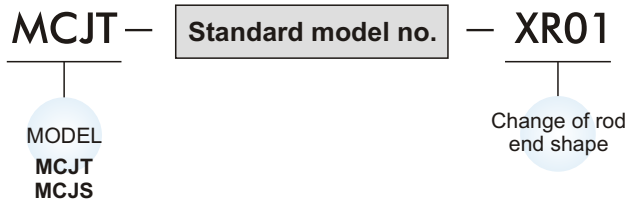
EX: MCQA-11-40-100M-XR01 (A=50, C=35, E=M12 x 1.25)

Model	Tube I.D. (mm)	A	B1	C	E	G	I (IB)
MCQA	40	30	14	21	M14 x 1.5	16	11
	50	35	17	23	M18 x 1.5	20	11
	63	35	17	23	M18 x 1.5	20	11
	80	40	22	31	M22 x 1.5	25	15
	100	40	27	32	M26 x 1.5	30	15
	125	45	30	47	M30 x 1.5	35	32
	150	50	36	47	M30 x 1.5	40	32
MCQV2 MCQI2	32	22	10	26	M10 x 1.25	12	20
	40	24	13	30	M12 x 1.25	16	20.5
	50	32	16	37	M16 x 1.5	20	28
	63	32	16	37	M16 x 1.5	20	26
	80	40	21	46	M20 x 1.5	25	32.5
	100	40	21	51	M20 x 1.5	25	37.5
MCQV	125	54	27	65	M27 x 2.0	32	40
	160	72	36	80	M36 x 2.0	40	55



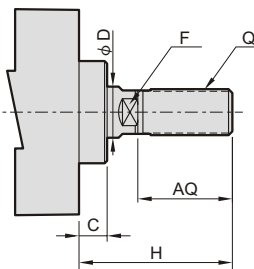
Note: The dimensions didn't mark, please consult us.

Change of rod end shape

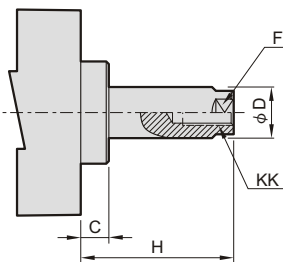


EX: MCJT-11-40-100M-XR01 (H=50, AQ=35, Q=M12×1.25)

11 : Male thread

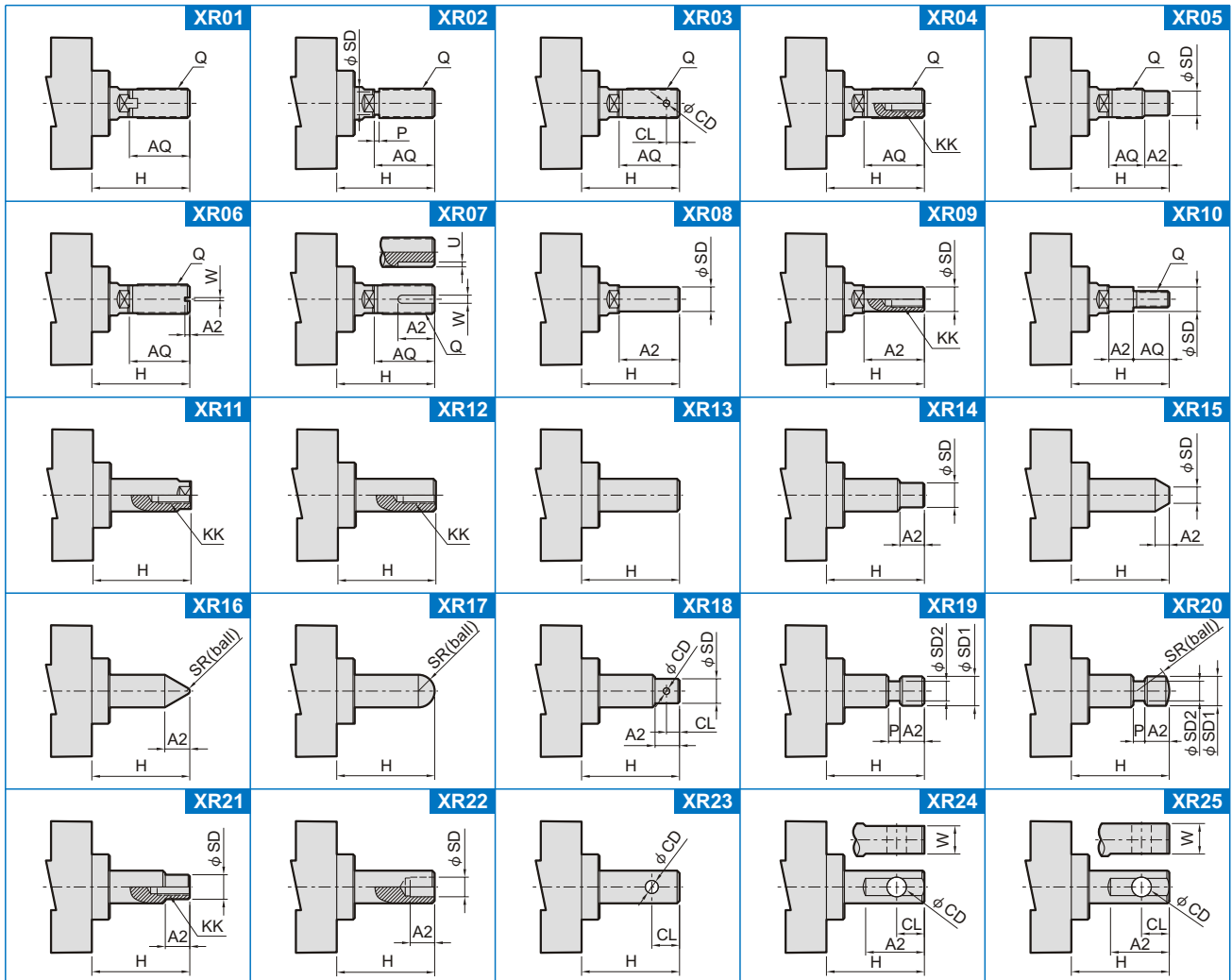


12 : Female thread



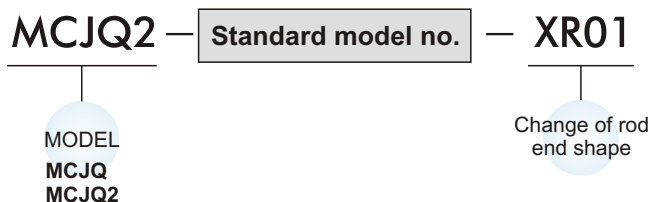
Model	Tube I.D. (mm)	AQ	C	D	F	H		KK	Q
						11 : Male thread	12 : Female thread		
MCJT	12	10	—	6	5	14.5	4.5	M3×0.5×7 depth	M5×0.8
	16	10	—	8	6	14.5	4.5	M4×0.7×7 depth	M6×1.0
	20	14	1.5	10	8	19.5	5.5	M5×0.8×10 depth	M6×1.0
	25	16	2	12	10	22	6	M6×1.0×10 depth	M10×1.25
	32	17	3.3	16	14	24	7	M8×1.25×12 depth	M14×1.5
	40	27	3.3	16	14	34	7	M8×1.25×12 depth	M14×1.5
	50	27	4	20	17	36	9	M10×1.5×15 depth	M18×1.5
	63	27	4	20	17	36	9	M10×1.5×15 depth	M18×1.5
	80	33	5	25	22	44	11	M14×2×20 depth	M22×1.5
100	33	3	30	27	42	9	M18×2.5×20 depth	M26×1.5	
MCJS	12	10.5	1	6	5	15.5	5	M3×0.5×6 depth	M5×0.8
	16	10.5	1.5	6	5	15.5	5.5	M3×0.5×6 depth	M5×0.8
	20	14	—	10	8	18.5	4.5	M5×0.8×7 depth	M8×1.25
	25	17.5	—	12	10	22.5	5	M6×1.0×12 depth	M10×1.25
	32	23.5	—	16	14	28.5	7	M8×1.25×13 depth	M14×1.5
	40	23.5	—	16	14	28.5	7	M8×1.25×13 depth	M14×1.5
	50	28.5	—	20	17	33.5	8	M10×1.5×15 depth	M18×1.5
	63	28.5	—	20	17	33.5	8	M10×1.5×15 depth	M18×1.5
	80	35.5	2.5	25	22	51	15.5	M16×2.0×21 depth	M22×1.5
100	35.5	2.5	30	27	55	19.5	M20×2.5×27 depth	M26×1.5	

Change of rod end shape



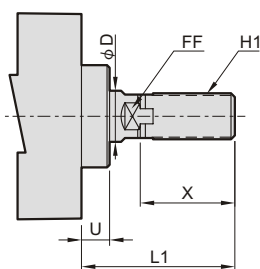
Note: The dimensions didn't mark, please consult us.

Change of rod end shape



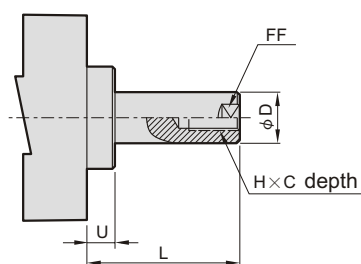
EX: MCJQ-11-40-100M-XR01 (L1=50, X=35, H1=M12×1.25)

11 : Male thread



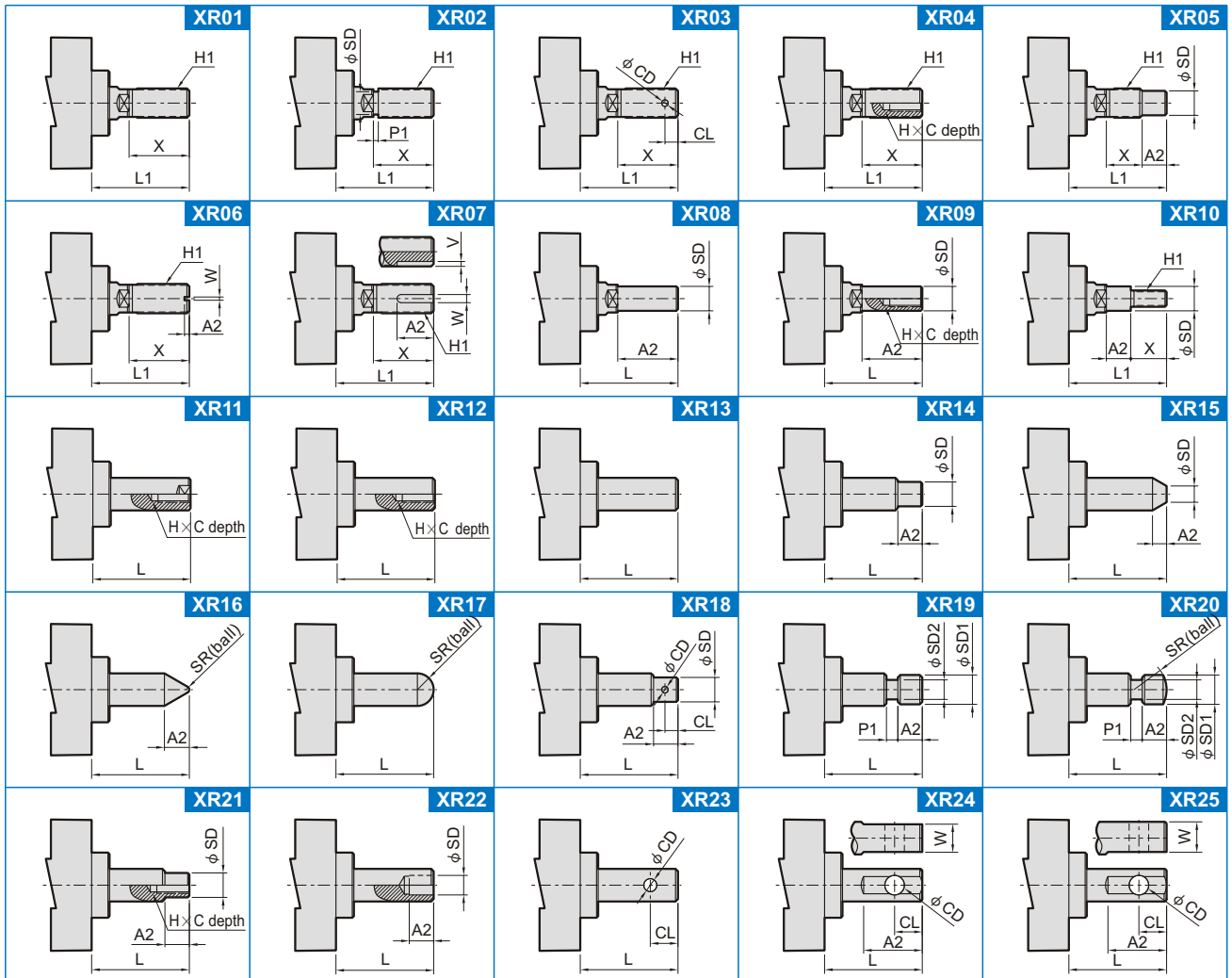
Model	Tube I.D. (mm)	C	D	FF	H	H1	X
MCJQ	12	6	6	5	M3×0.5	M5×0.8	10.5
	16	8	8	6	M4×0.7	M6×1.0	12
	20	7	10	8	M5×0.8	M8×1.25	14
	25	12	12	10	M6×1.0	M10×1.25	17.5
	32	13	16	14	M8×1.25	M14×1.5	23.5
	40	13	16	14	M8×1.25	M14×1.5	23.5
	50	15	20	17	M10×1.5	M18×1.5	28.5
	63	15	20	17	M10×1.5	M18×1.5	28.5
	80	21	25	22	M16×2.0	M22×1.5	35.5
100	27	30	27	M20×2.5	M26×1.5	35.5	
MCJQ2	12	6	6	5	M3×0.5	M5×0.8	10.5
	16	8	8	6	M4×0.7	M6×1.0	12
	20	10	10	8	M5×0.8	M8×1.25	14
	25	12	12	10	M6×1.0	M10×1.25	17.5

12 : Female thread



Model	Tube I.D. (mm)	Standard stroke			Long stroke				
		Stroke range	L	L1	U	Stroke range	L	L1	U
MCJQ	12	5~30	3.5	14	—	35~100	13.5	24	—
	16	5~30	3.5	15.5	—	35~100	13.5	25.5	—
	20	5~50	4.5	18.5	—	75~200	14.5	28.5	—
	25	5~50	5	22.5	—	75~300	15	32.5	—
	32	5~100	7	28.5	—	125~300	17	38.5	5
	40	5~100	7	28.5	—	125~300	17	38.5	5
	50	5~100	8	33.5	—	125~300	18	43.5	5
	63	5~100	8	33.5	—	125~300	18	43.5	5
	80	5~100	10	43.5	—	125~300	20	53.5	5
100	5~100	12	43.5	—	125~300	—	—	—	
MCJQ2	12	5~30	3.5	14	—	X			
	16	5~30	3.5	15.5	—				
	20	5~50	4.5	18.5	—				
	25	5~50	5	22.5	—				

Change of rod end shape



Note: The dimensions didn't mark, please consult us.

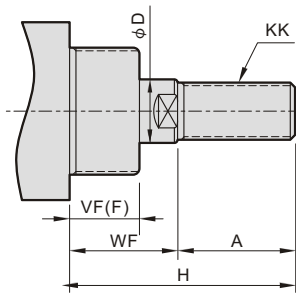
CHANGE OF ROD END SHAPE

Change of rod end shape

MCMA — Standard model no. — XR01

MODEL
MCMA
MCMB
MCMJ
MCMJ

Change of rod end shape



EX: MCMA-11-32-100-XR01 (A=50, WF=35, KK=M12 x 1.25)

Model	Tube I.D. (mm)	A	D	WF	KK	VF(F)	H
MCMA	16	16	6	22	M6 x 1.0	12	—
	20	20	8	18	M8 x 1.25	12	—
	25	22	10	27	M10 x 1.25	15	—
	32	22	12	30	M10 x 1.25	18	—
	40	30	14	27	M12 x 1.25	17	—
MCMB	20	18	8	—	M8 x 1.25	13	41
	25	22	10	—	M10 x 1.25	13	45
	32	22	12	—	M10 x 1.25	13	45
	40	24	14	—	M14 x 1.5	16	50
MCMJ	8	12	4	16	M4 x 0.7	12	—
	10	12	4	16	M4 x 0.7	12	—
	12	16	6	22	M6 x 1.0	17	—
	16	16	6	22	M6 x 1.0	18	—
	20	20	8	24	M8 x 1.25	20	—
MCMJ	25	22	10	28	M10 x 1.25	22	—
	6	15	3	—	M3 x 0.5	8	28
	10	15	4	—	M4 x 0.7	8	28
16	15	5	—	M5 x 0.8	8	28	

XR01 	XR02 	XR03 	XR04 	XR05
XR06 	XR07 	XR08 	XR09 	XR10
XR11 	XR12 	XR13 	XR14 	XR15
XR16 	XR17 	XR18 	XR19 	XR20
XR21 	XR22 	XR23 	XR24 	XR25

Note: The dimensions didn't mark, please consult us.

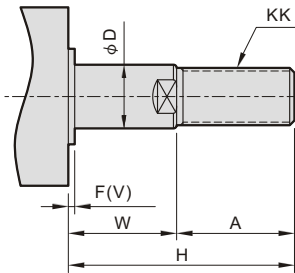
CHANGE OF ROD END SHAPE

mindman

Change of rod end shape

MCCG — Standard model no. — XR01

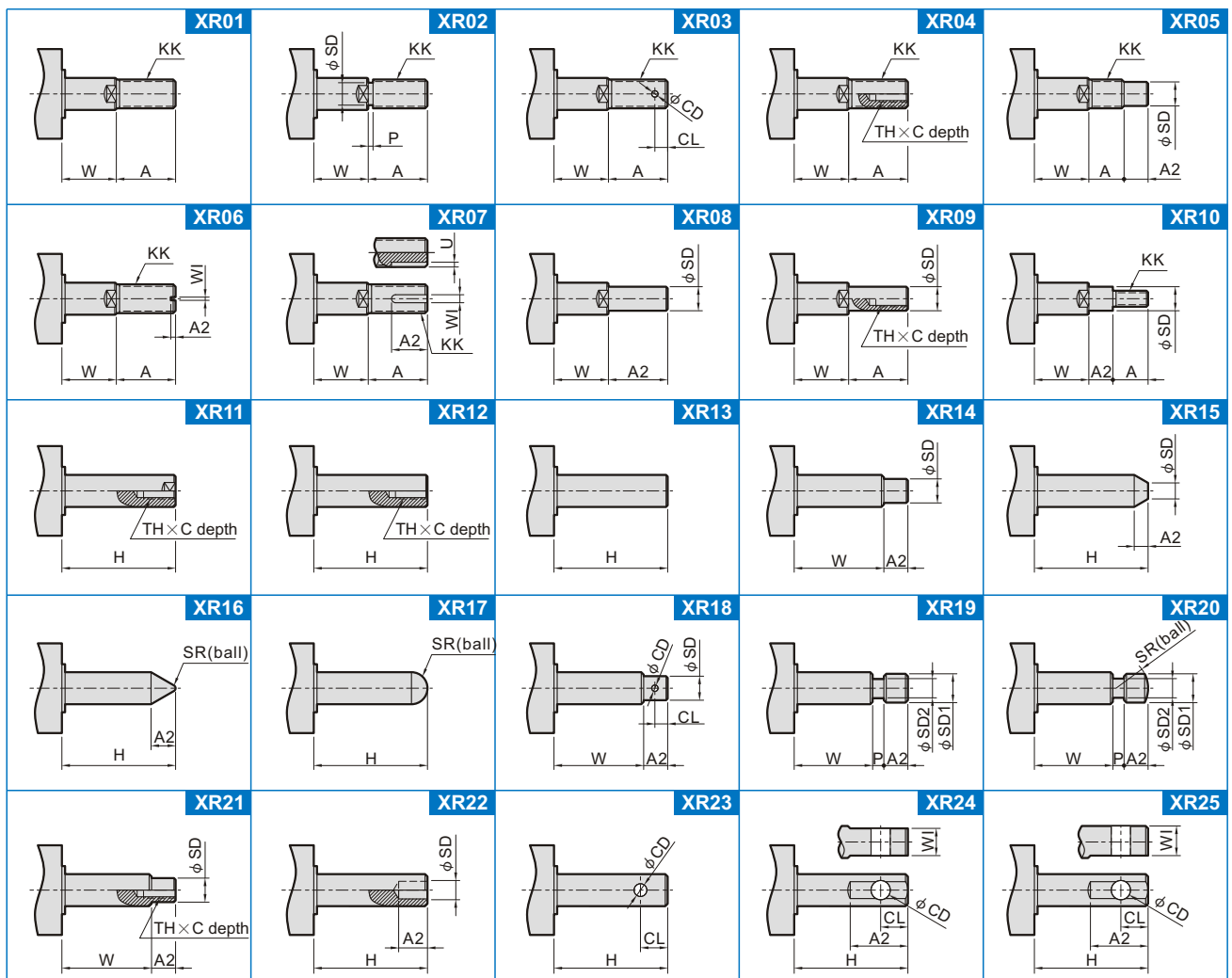
MODEL
MCCG
MCCN



Change of rod end shape

Model	Tube I.D. (mm)	A	D	W	KK	F(V)	H
MCCG (mm)	20	18	8	—	M8 × 1.25	2	35
	25	22	10	—	M10 × 1.25	2	40
	32	22	12	—	M10 × 1.25	2	40
	40	30	16	—	M14 × 1.5	2	50
	50	35	20	—	M18 × 1.5	2	58
	63	35	20	—	M18 × 1.5	2	58
MCCN (inch)	20	0.50	0.315	0.50	1/4-28 UNF	0.08	—
	25	0.50	0.394	0.62	5/16-24 UNF	0.08	—
	32	0.75	0.472	0.88	7/16-20 UNF	0.08	—
	40	0.75	0.630	0.88	7/16-20 UNF	0.08	—
	50	0.88	0.787	1.19	1/2-20 UNF	0.08	—
	63	0.88	0.787	1.19	1/2-20 UNF	0.08	—

EX: MCCG-11-40-100M-XR01 (A=50,H=90, KK=M12 × 1.25)



Note: The dimensions didn't mark, please consult us.