

MSC200 / 300 series

FLOW CONTROL VALVE



mindman



Specification

Model	MSC200		MSC300	
	Bore No.	6A	8A	10A
Port size	Rc1/8	Rc1/4	Rc3/8	Rc1/2
Medium	Air			
Operating pressure range	0~1 MPa			
Proof pressure	1.5 MPa			
Ambient temperature	-5~+60°C (No freezing)			
Flow (ℓ/min)	800		1650	
Weight	72 g		130 g	

※ Supply pressure: 0.5 MPa, Temperature: 20°C

Order example

MSC200 - 6A - G

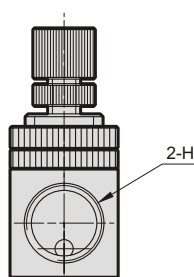
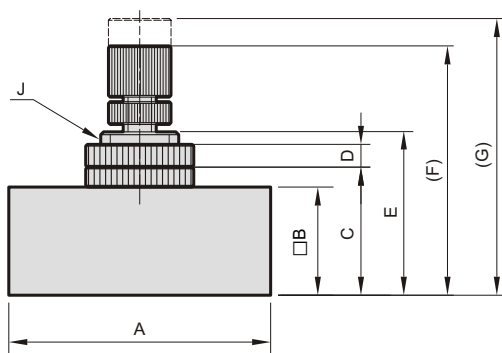
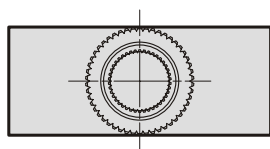
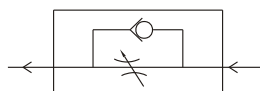
MODEL

BORE SIZE

PORT THREAD

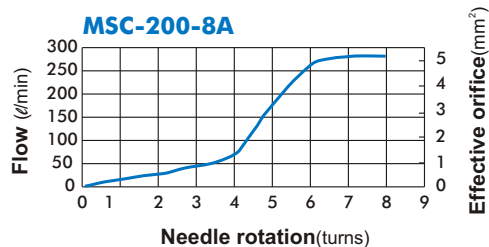
Blank: Rc thread
G: G thread
NPT: NPT thread

Symbol

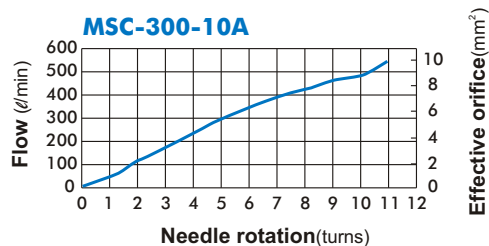


Flow feature

MSC-200-8A



MSC-300-10A



Code Model	A	B	C	D	E	F	G	H	J	
MSC200	6A	46	19	22.5	4	28.7	43.8	48.6	Rc1/8	M14x1.25
	8A	46	19	22.5	4	28.7	43.8	48.6	Rc1/4	M14x1.25
MSC300	10A	56	25.4	30	4	37	53.7	62.5	Rc3/8	M18x1.0
	15A	56	25.4	30	4	37	53.7	62.5	Rc1/2	M18x1.0



mindman