

MSR* / MEF300 series

PLASTIC SILENCER / EXHAUST CLEANER

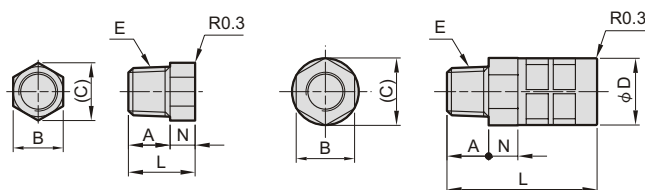


Specification

Model	MSR
Medium	Air
Operating pressure range	0~0.9 MPa
Ambient temperature	0~60°C

MSR01-S

MSR02-S



Order example

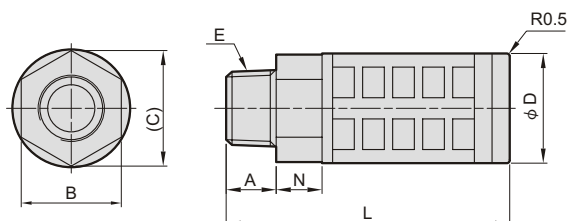
MSR01 - S

MODEL

01: R1/8
02: R1/4
03: R3/8

S: S type
B: B type

MSR*-B



MSR*-*

Model	Code Port size	A	B	C	D	E	L	N
MSR01-S	R1/8	10	10	11.5	—	R1/8	16	6
MSR01-B	R1/8	7	14	16.2	16	R1/8	33	7
MSR02-S	R1/4	10	14	16.2	16	R1/4	36	7
MSR02-B	R1/4	10	17	19.6	20.3	R1/4	63	8.5
MSR03-B	R3/8	12	24	26.2	26.3	R3/8	67.5	11

MEF300

Exhaust Cleaner

Features

- Centralised unit for collecting and cleaning exhausted air.

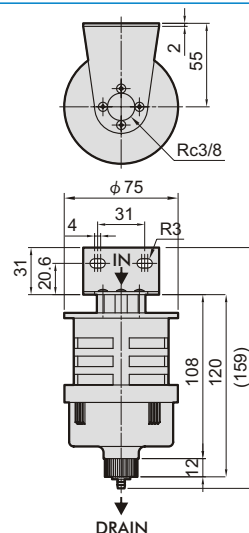


Order example

MEF300 - 03

MODEL

03: Rc3/8



Mindman