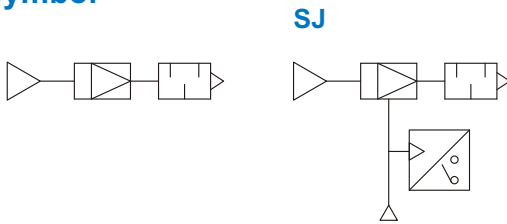


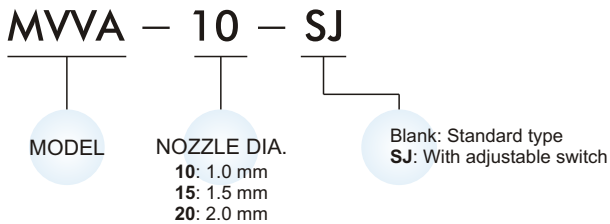
Specification

Model	MVVA-10	MVVA-15	MVVA-20
Nozzle dia.	1.0 mm	1.5 mm	2.0 mm
Port size	G1/8	G1/4	G3/8
Medium	Air		
Operating pressure range	0.1~0.6 MPa		
Ambient temperature	0~+60℃ (No freezing)		
Final vacuum	-91.8 kPa (-690mmHg)		
Suction flow	32 ℓ/min	63 ℓ/min	130 ℓ/min
Air consumption	76 ℓ/min	100 ℓ/min	185 ℓ/min
Supply pressure	0.5 Mpa		
Signal setting range SJ type	-20.0 ~ -90 kPa (-150 ~ -680 mm Hg)		
Lubricator	Not required		
Weight	Standard type	84 g	126 g
	SJ type	110 g	158 g

Symbol

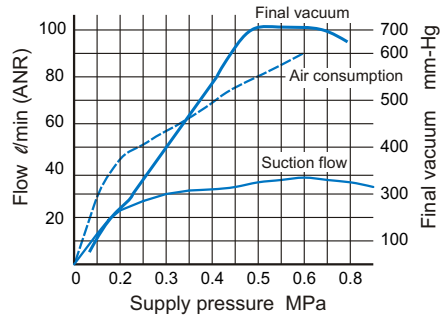


Order example

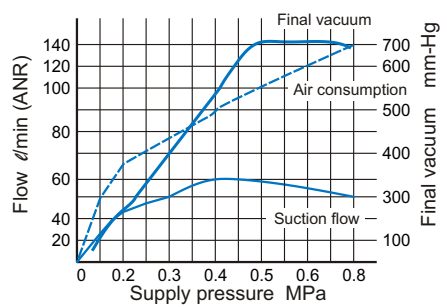


Vacuum characteristics

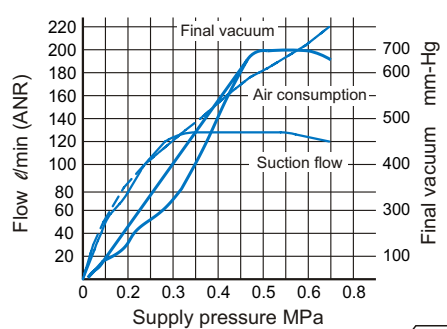
MVVA-10



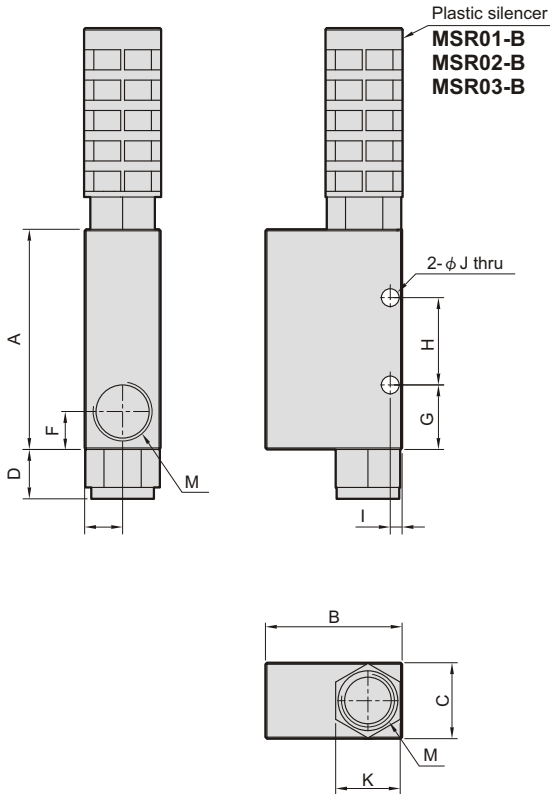
MVVA-15



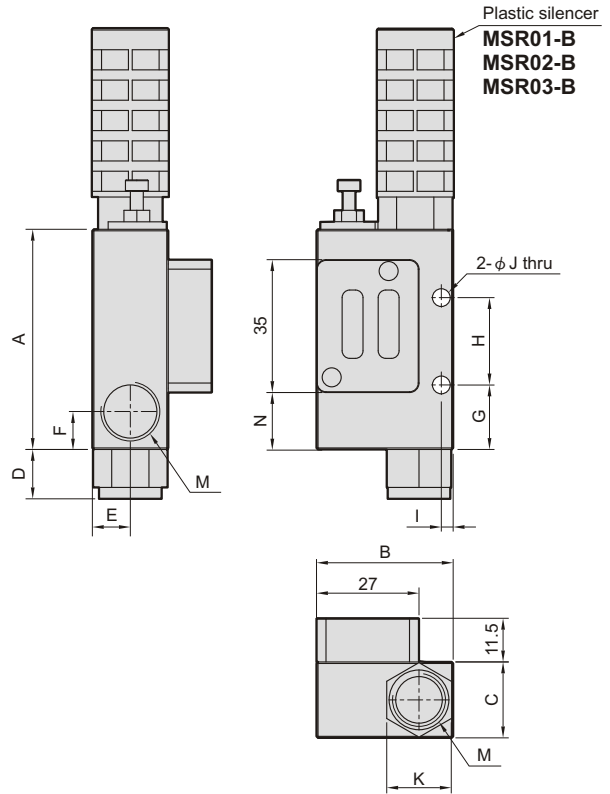
MVVA-20



MVVA-**-**

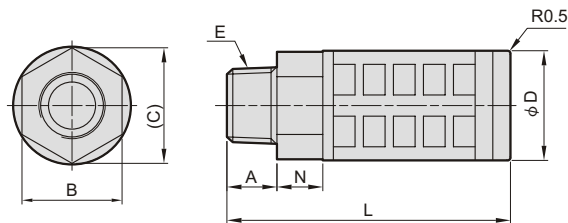


MVVA-**-SJ



Code Model	A	B	C	D	E	F	G	H	I	J	K	N	M
MVVA-10	55	34	15.5	10	7.75	10	13	18	3	4.5	14	—	G1/8
MVVA-10-SJ	55	34	15.5	10	7.75	10	13	18	3	4.5	14	9	G1/8
MVVA-15	58	36	20	13	10	10	17	23	3	4.5	17	—	G1/4
MVVA-15-SJ	58	36	20	13	10	10	17	23	3	4.5	17	15	G1/4
MVVA-20	75	43	30	15.5	15	15.5	25.5	26.5	5.65	5.5	22	—	G3/8
MVVA-20-SJ	75	43	30	15.5	15	15.5	25.5	26.5	5.65	5.5	22	31	G3/8

MSR*-B



Model	A	B	C	D	E	L	N
MSR01-B	7	14	16.2	16	R1/8	33	7
MSR02-B	10	17	19.6	20.3	R1/4	63	8.5
MSR03-B	12	24	26.2	26.3	R3/8	67.5	11