

Order example

RCI-N-□

MODEL

RCI: Reed Switch
 RCI-N: Reed Switch (NPN)
 RCI-P: Reed Switch (PNP)
 RNI: NPN
 RPI: PNP

THE LENGTH OF CABLE

Blank: L=1000mm
 3M: L=3000mm
 5M: L=5000mm
 QD: M8 3PIN connect
 EQD: M8 3PIN connect

Assembling style

Cylinder type	MCQI2, MCBQI2, MCJI, METB
Mounting clamp	

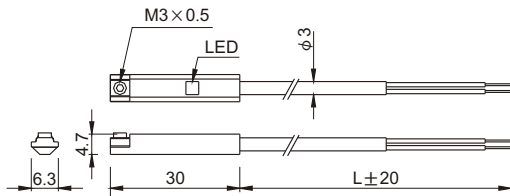
Specification

Model	RCI	RCI-N	RCI-P	RNI	RPI
Wiring	2 wire	3 wire		3 wire	
Switch type	Reed switch			NPN current sinking	PNP current sourcing
Contracts	Normal open				
Voltage range	5~240V DC/AC	10~30V DC/AC			
Current range	100mA max.	500mA max.		200mA max.	
Contact rating (※1)	10W max.			6W max.	
Voltage drop	3.0V max.	0.1V@100mA max.		1.5V max.	
Response time	2ms max.			1ms max.	
Lead wire	φ 3, 2C	φ 3, 3C			
Operating frequency	200 Hz			1000 Hz	
Magnet requirement (※2)	65 Gauss				
Indicator lamp	LED lights up when ON				
Indicator	Red LED	Yellow LED		Red LED	Yellow LED
Current consumption	—	5 mA@24V DC max.		20 mA@24V DC max.	
Leakage current	—	—	—	0.05mA max.	
Temperature	- 10~+ 70°C (No freezing)				
Shock (※3)	30G			50G	
Vibration (※4)	9G				
Protection classification	ICE 529 IP67				
Protection circuit (※5)	1			2,3,4	
Weight	23 g (2m cable)				
Symbol					

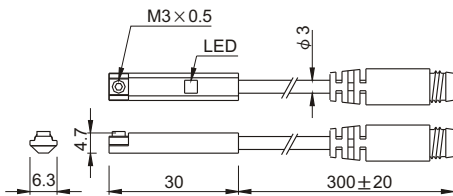
- ※ 1. WARNING: Never exceed rating (Watt=Voltage x Amperage). Permanent damage to sensor will occur.
- ※ 2. Measuring standard target : φ 15.5x φ 8x5t (Anisotropy rubber magnet).
- ※ 3. Sin wave / X.Y.Z. 3 directions / 3 times each direction / 11ms each time.
- ※ 4. Double amplitude 1.5mm / 10Hz~55Hz~10Hz(Sweep 1min) / X.Y.Z. 3 directions / 1 hour each time.
- ※ 5. 1. 1=None / 2=Short-circuit / 3=Power Source Reverse polarity / 4=Surge Suppression.
- ※ 6. Caution for safety please refer to the 2-03~04 page.

Dimension

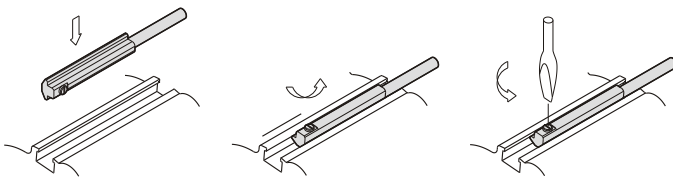
RCI-* / RNI / RPI



RCI-*-QD / RNI-QD / RPI-QD



Mounting



QD Pinout

- 2-wire QD wiring
- 2-wire EQD wiring
- 3 wire QD wiring

