

Specification

※ Port thread G, NPT, are also available.

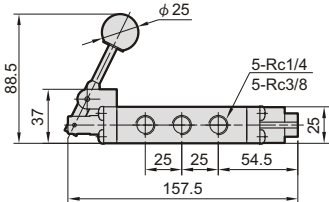
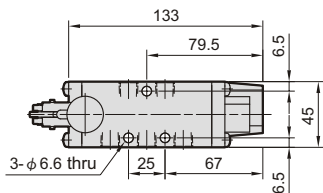
| Model | Acting | Port size | Port no. / Position | Medium | Operating pressure range | Ambient temperature | Weight |
|----------------|---------------------------------------|-----------|---------------------|--------|--------------------------|---------------------|--------|
| ACT-401-02 | Spring return type | Rc1/4 | 5/2 | Air | 0~0.9 MPa | -0~+60℃ | 380 g |
| ACT-401-03 | Spring return type | Rc3/8 | 5/2 | Air | 0~0.9 MPa | -0~+60℃ | 363 g |
| ACT-401-02-3A | Automatic return type (Closed center) | Rc1/4 | 5/3 | Air | 0~0.9 MPa | -0~+60℃ | 385 g |
| ACT-401-03-3A | Automatic return type (Closed center) | Rc3/8 | 5/3 | Air | 0~0.9 MPa | -0~+60℃ | 368 g |
| ACT-401-02-3A1 | Automatic return (Exhaust center) | Rc1/4 | 5/3 | Air | 0~0.9 MPa | -0~+60℃ | 385 g |
| ACT-401-03-3A1 | Automatic return (Exhaust center) | Rc3/8 | 5/3 | Air | 0~0.9 MPa | -0~+60℃ | 368 g |
| ACT-402-02 | Spring return type | Rc1/4 | 5/2 | Air | 0~0.9 MPa | -0~+60℃ | 357 g |
| ACT-402-03 | Spring return type | Rc 3/8 | 5/2 | Air | 0~0.9 MPa | -0~+60℃ | 340 g |
| ACT-403-02 | Spring return type | Rc1/4 | 5/2 | Air | 0~0.9 MPa | -0~+60℃ | 587 g |
| ACT-403-03 | Spring return type | Rc3/8 | 5/2 | Air | 0~0.9 MPa | -0~+60℃ | 570 g |
| ACT-405-02 | Spring return type | Rc1/4 | 5/2 | Air | 0~0.9 MPa | -0~+60℃ | 370 g |
| ACT-405-03 | Spring return type | Rc3/8 | 5/2 | Air | 0~0.9 MPa | -0~+60℃ | 353 g |
| ACT-406-02 | Pilot return type | Rc1/4 | 5/2 | Air | 0~0.9 MPa | -0~+60℃ | 352 g |
| ACT-406-03 | Pilot return type | Rc3/8 | 5/2 | Air | 0~0.9 MPa | -0~+60℃ | 334 g |
| ACT-407-02 | Pilot return type | Rc1/4 | 5/2 | Air | 0~0.9 MPa | -0~+60℃ | 628 g |
| ACT-407-03 | Pilot return type | Rc3/8 | 5/2 | Air | 0~0.9 MPa | -0~+60℃ | 606 g |
| ACT-410-02 | Hand return type | Rc1/4 | 5/2 | Air | 0~0.9 MPa | -0~+60℃ | 346 g |
| ACT-410-03 | Hand return type | Rc3/8 | 5/2 | Air | 0~0.9 MPa | -0~+60℃ | 330 g |
| ACT-410-02-3 | Hand return type (Closed center) | Rc1/4 | 5/3 | Air | 0~0.9 MPa | -0~+60℃ | 346 g |
| ACT-410-03-3 | Hand return type (Closed center) | Rc3/8 | 5/3 | Air | 0~0.9 MPa | -0~+60℃ | 330 g |
| ACT-410-02-31 | Hand return (Exhaust center) | Rc1/4 | 5/3 | Air | 0~0.9 MPa | -0~+60℃ | 346 g |
| ACT-410-03-31 | Hand return (Exhaust center) | Rc3/8 | 5/3 | Air | 0~0.9 MPa | -0~+60℃ | 330 g |
| ACT-411-02 | Hand return type | Rc1/4 | 5/2 | Air | 0~0.9 MPa | -0~+60℃ | 346 g |
| ACT-411-03 | Hand return type | Rc3/8 | 5/2 | Air | 0~0.9 MPa | -0~+60℃ | 330 g |
| ACT-411-02-3 | Hand return type | Rc1/4 | 5/3 | Air | 0~0.9 MPa | -0~+60℃ | 620 g |
| ACT-411-03-3 | Hand return type | Rc3/8 | 5/3 | Air | 0~0.9 MPa | -0~+60℃ | 603 g |
| ACT-411-02-3A | Automatic return type (Closed center) | Rc1/4 | 5/3 | Air | 0~0.9 MPa | -0~+60℃ | 658 g |
| ACT-411-03-3A | Automatic return type (Closed center) | Rc3/8 | 5/3 | Air | 0~0.9 MPa | -0~+60℃ | 640 g |
| ACT-411-02-3A1 | Automatic return (Exhaust center) | Rc1/4 | 5/3 | Air | 0~0.9 MPa | -0~+60℃ | 658 g |
| ACT-411-03-3A1 | Automatic return (Exhaust center) | Rc3/8 | 5/3 | Air | 0~0.9 MPa | -0~+60℃ | 640 g |
| ACT-412-02 | Hand return type | Rc1/4 | 5/2 | Air | 0~0.9 MPa | -0~+60℃ | 342 g |
| ACT-412-03 | Hand return type | Rc3/8 | 5/2 | Air | 0~0.9 MPa | -0~+60℃ | 325 g |
| ACT-301-02 | Spring return type | Rc1/4 | 3/2 | Air | 0~0.9 MPa | -0~+60℃ | 318 g |
| ACT-302-02 | Spring return type | Rc1/4 | 3/2 | Air | 0~0.9 MPa | -0~+60℃ | 296 g |
| ACT-303-02 | Spring return type | Rc1/4 | 3/2 | Air | 0~0.9 MPa | -0~+60℃ | 520 g |
| ACT-305-02 | Spring return type | Rc1/4 | 3/2 | Air | 0~0.9 MPa | -0~+60℃ | 305 g |
| ACT-306-02 | Pilot return type | Rc1/4 | 3/2 | Air | 0~0.9 MPa | -0~+60℃ | 288 g |
| ACT-307-02 | Pilot return type | Rc1/4 | 3/2 | Air | 0~0.9 MPa | -0~+60℃ | 564 g |
| ACT-310-02 | Hand return type | Rc1/4 | 3/2 | Air | 0~0.9 MPa | -0~+60℃ | 282 g |
| ACT-311-02 | Hand return type | Rc1/4 | 3/2 | Air | 0~0.9 MPa | -0~+60℃ | 555 g |
| ACT-312-02 | Hand return type | Rc1/4 | 3/2 | Air | 0~0.9 MPa | -0~+60℃ | 270 g |

Hand valve

ACT-401

ACT-401-02 / 02-3A
ACT-401-03 / 03-3A

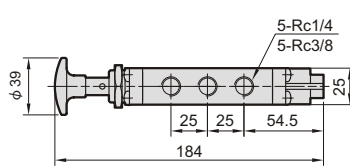
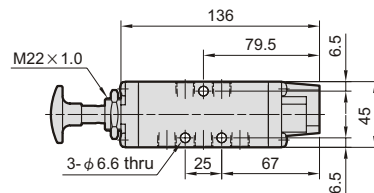
ACT-401-02-3A1
ACT-401-03-3A1



Plam valve

ACT-402

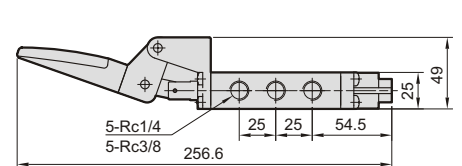
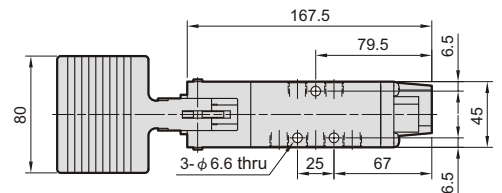
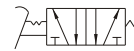
ACT-402-02
ACT-402-03



Pedal valve

ACT-403

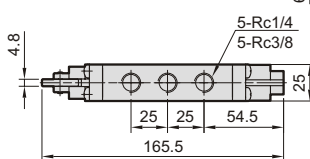
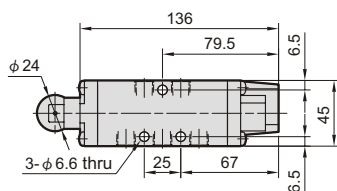
ACT-403-02
ACT-403-03



Roller plunger valve

ACT-405

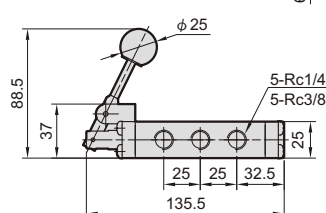
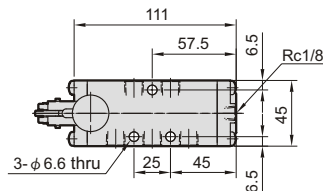
ACT-405-02
ACT-405-03



Hand valve

ACT-406

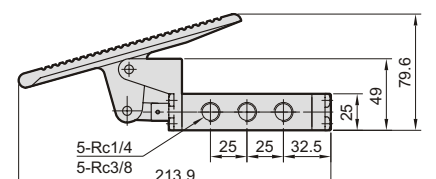
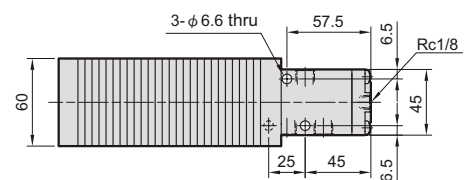
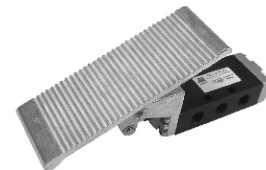
ACT-406-02
ACT-406-03



Treadle valve

ACT-407

ACT-407-02
ACT-407-03

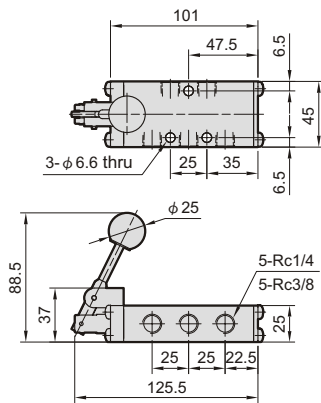


Hand valve

ACT-410

ACT-410-02 / 02-3
ACT-410-03 / 03-3

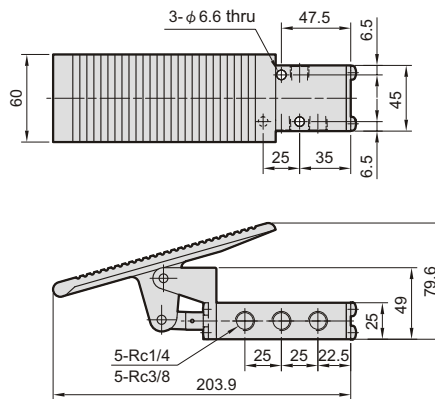
ACT-410-02-31
ACT-410-03-31



Treadle valve

ACT-411

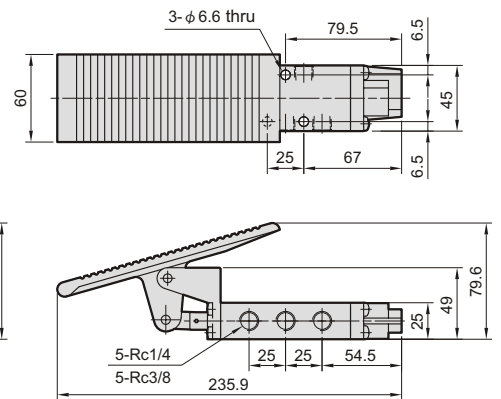
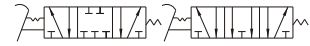
ACT-411-02 / 02-3
ACT-411-03 / 03-3



Treadle valve

ACT-411-A

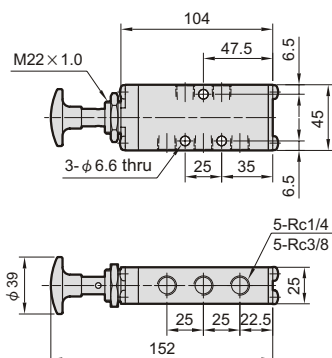
ACT-411-02-3A / 3A1
ACT-411-03-3A / 3A1



Plam valve

ACT-412

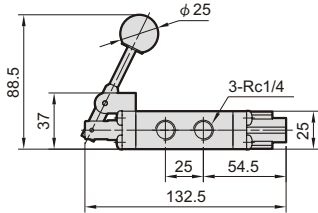
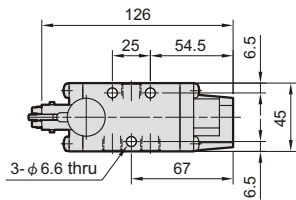
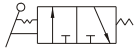
ACT-412-02
ACT-412-03



Hand valve

ACT-301

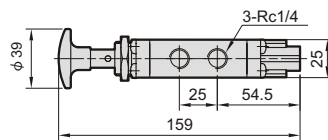
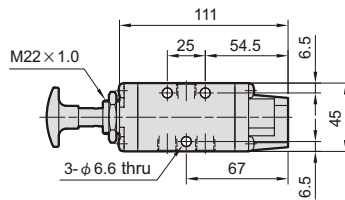
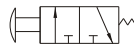
ACT-301-02



Plam valve

ACT-302

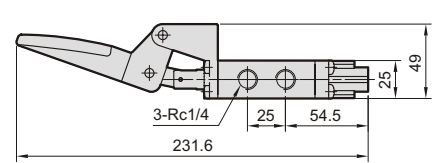
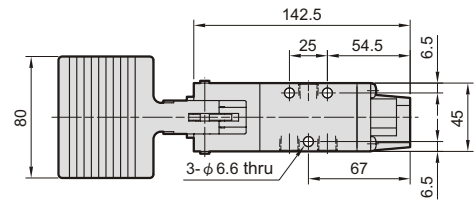
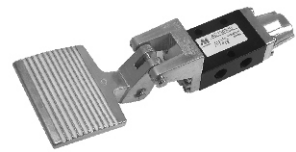
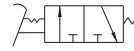
ACT-302-02



Treadle valve

ACT-303

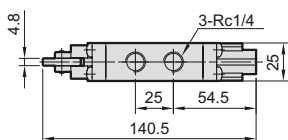
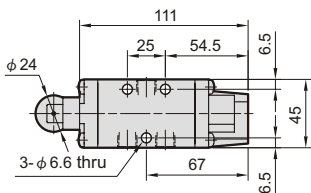
ACT-303-02



Roller plunger valve

ACT-305

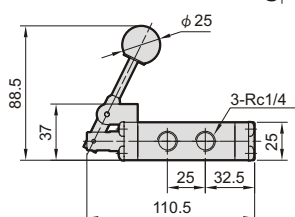
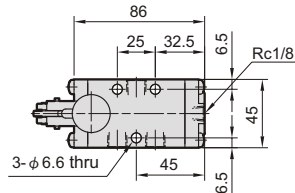
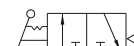
ACT-305-02



Hand valve

ACT-306

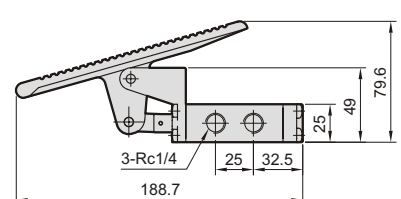
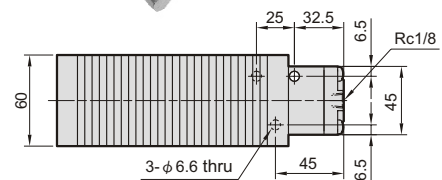
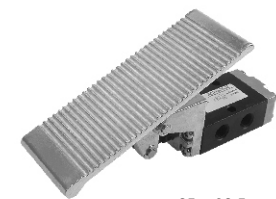
ACT-306-02



Treadle valve

ACT-307

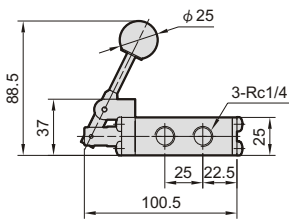
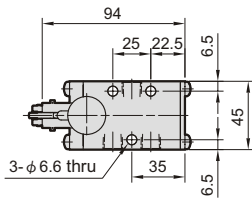
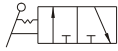
ACT-307-02



Hand valve

ACT-310

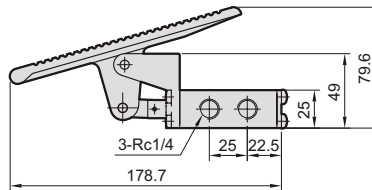
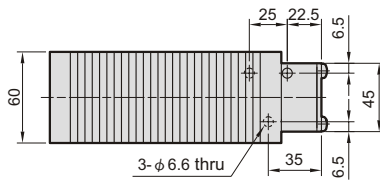
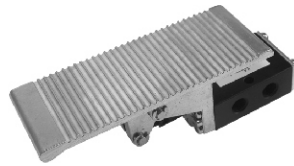
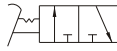
ACT-310-02



Treadle valve

ACT-311

ACT-311-02



Plam valve

ACT-312

ACT-312-02

