

Specification

※ Port thread G, NPT, are also available.

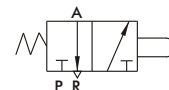
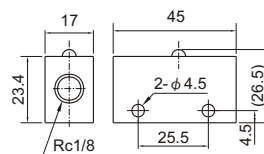
Model	No. of port	Bore size	Medium	Operation pressure range	Ambient temperature	Weight
EPA-100 / 100A	3	Rc1/8	Air	0~0.9 MPa	-5~+60℃ (No freezing)	43 g / 68 g
EPA-101 / 101A	3	Rc1/8	Air	0~0.9 MPa	-5~+60℃ (No freezing)	70 g / 68 g
EPA-102	3	Rc1/8	Air	0~0.9 MPa	-5~+60℃ (No freezing)	104 g
EPA-103	3	Rc1/8	Air	0~0.9 MPa	-5~+60℃ (No freezing)	67 g
EPA-104	3	Rc1/8	Air	0~0.9 MPa	-5~+60℃ (No freezing)	71 g
EPA-105	3	Rc1/8	Air	0~0.9 MPa	-5~+60℃ (No freezing)	68 g
EPA-105L	3	Rc1/8	Air	0~0.9 MPa	-5~+60℃ (No freezing)	104 g
EPA-106	3	Rc1/8	Air	0~0.9 MPa	-5~+60℃ (No freezing)	61 g
EPA-107	3	Rc1/8	Air	0~0.9 MPa	-5~+60℃ (No freezing)	54 g
EPA-108*	3	Rc1/8	Air	0~0.9 MPa	-5~+60℃ (No freezing)	100 g
EPA-109	3	Rc1/8	Air	0~0.9 MPa	-5~+60℃ (No freezing)	108 g

EPA series

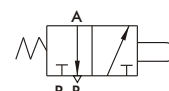
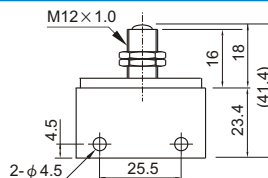
MECHANICAL VALVE



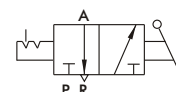
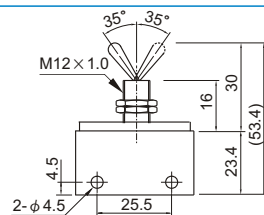
Pin plunger
EPA-100



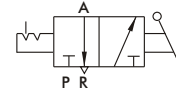
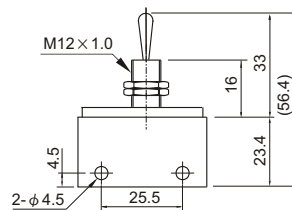
Ball actuator
EPA-100A



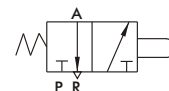
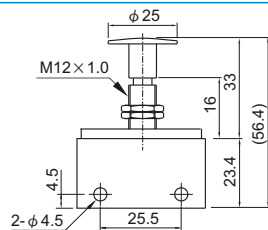
Retained toggle
EPA-101



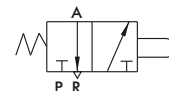
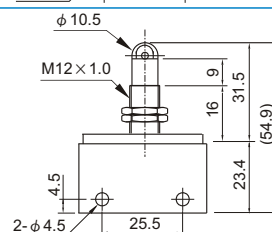
Toggle
EPA-101A



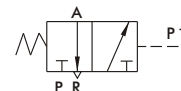
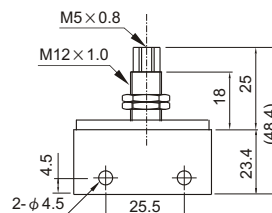
Palm button
EPA-102



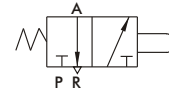
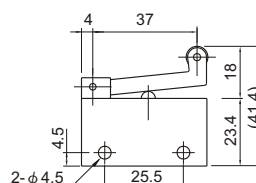
Roller plunger
EPA-103



Pilot
EPA-104



Roller lever
EPA-105



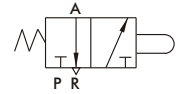
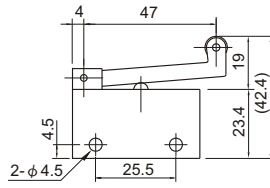
EPA series

MECHANICAL VALVE

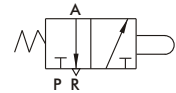
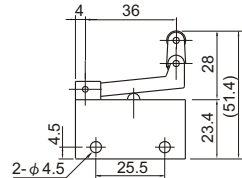


mindman

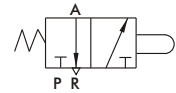
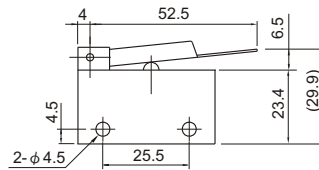
Roller lever
EPA-105L



One way lever
EPA-106

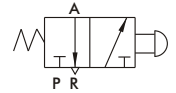
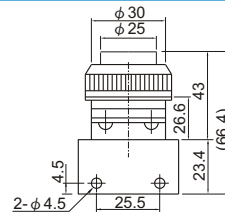


Plain lever
EPA-107



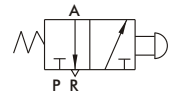
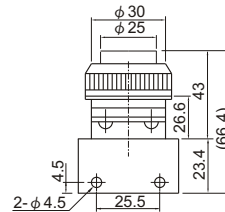
Push button
EPA-108B*

* : B=black

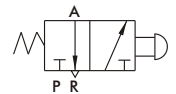
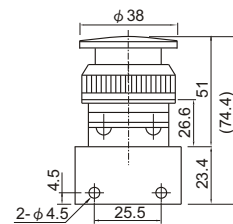


Push button
EPA-108C*

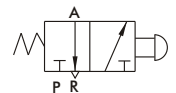
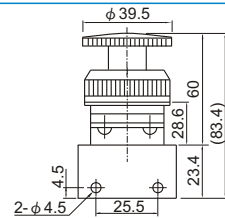
* : G=green



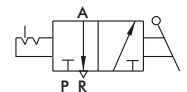
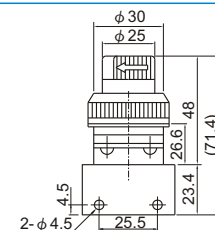
Palm actuator
EPA-108RA



Palm latching actuator
EPA-108RA RESET



Selector
EPA-109



mindman