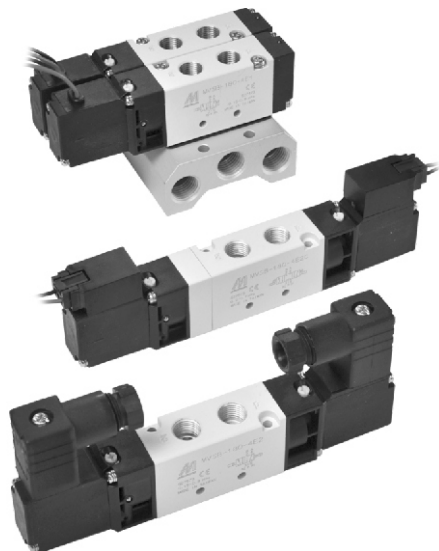


MVSB-180 series

SOLENOID VALVE

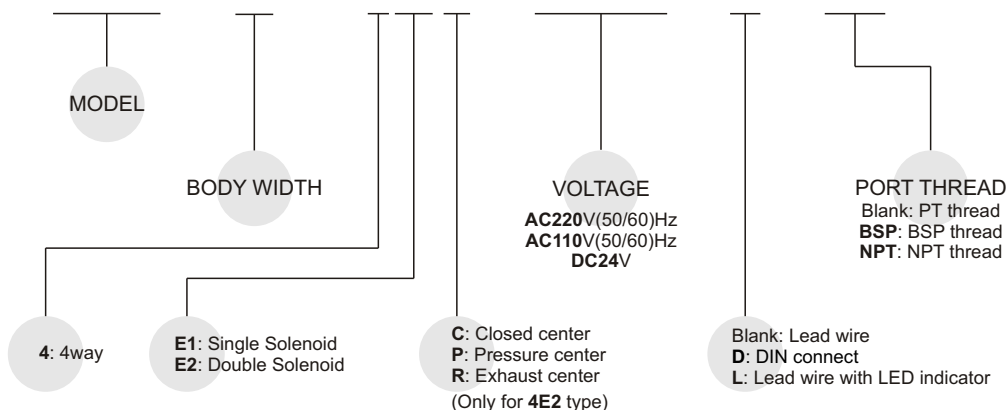


Specification:

| Model | 4E1 | 4E2 | 4E2C.P.R. |
|--------------------------|-------------------------------|-------|-------------------------|
| Bore No. | 6A | | |
| Port size | PT 1/8 | | |
| No. of port | 5 | | |
| No. of position | 2 | 3 | |
| Medium | Air | | |
| Operating pressure range | 1.5~8 kgf/cm ² | | 2~7 kgf/cm ² |
| Proof pressure | 10 kgf/cm ² | | |
| Effective orifice | 12 mm ² | | 9 mm ² |
| Response time | 30 ms | | |
| Ambient temperature | -5~ +50°C (No freezing) | | |
| Voltage | AC110V, 220V (50/60)Hz, DC24V | | |
| Power consumption | AC=2.1/1.8VA, DC=1.6W | | |
| Available voltage range | ± 10% | | |
| Insulation class | B class | | |
| Weight | 100 g | 143 g | 155 g |

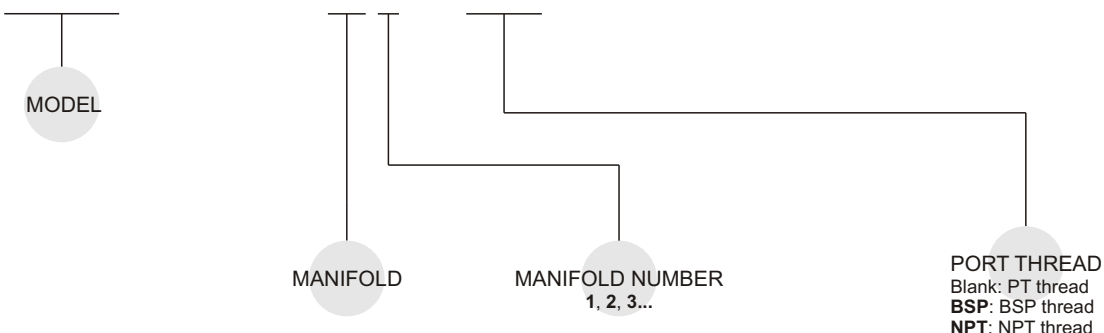
Order example of valve:

MVSB – 180 – 4E2C – AC110 – L – BSP



Order example of manifold:

MVSB – 180 – 5B3 – BSP

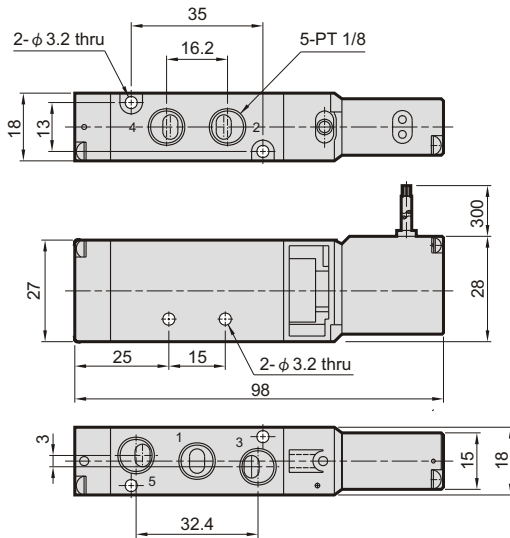
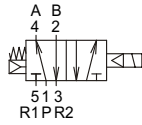


MVSB-180 Dimensions

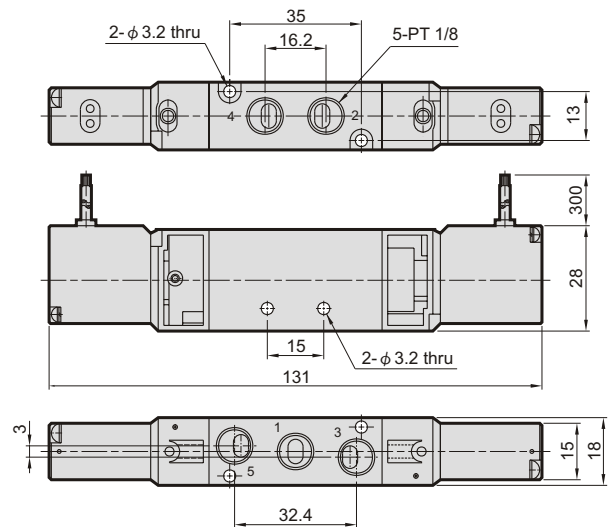
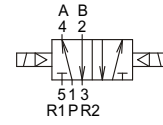
SOLENOID VALVE



MVSB-180-4E1

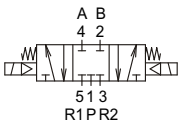


MVSB-180-4E2

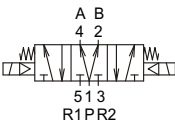


MVSB-180-4E2C.PR

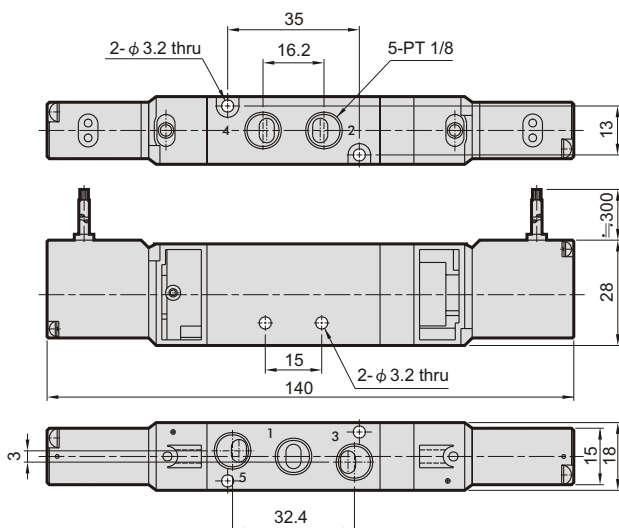
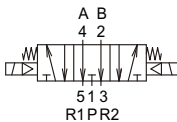
MVSB-180-4E2C



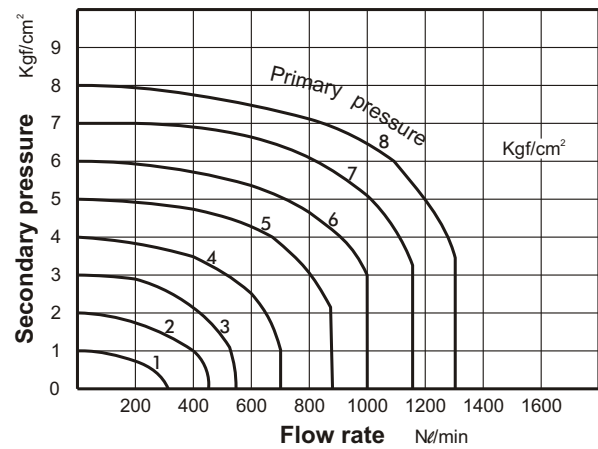
MVSB-180-4E2P



MVSB-180-4E2R



Flow features:

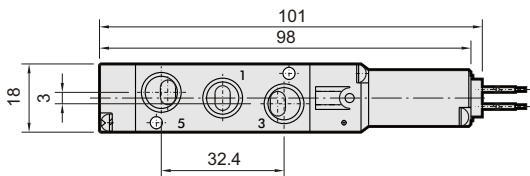
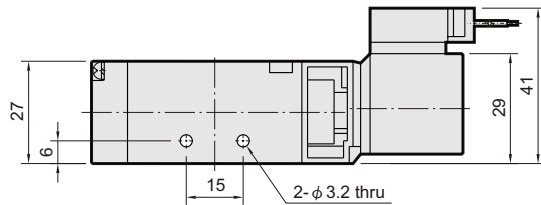
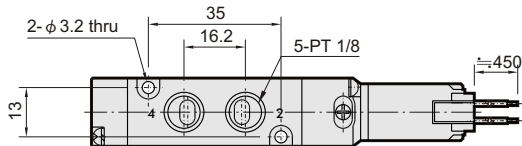
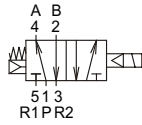


MVSB-180 Dimensions

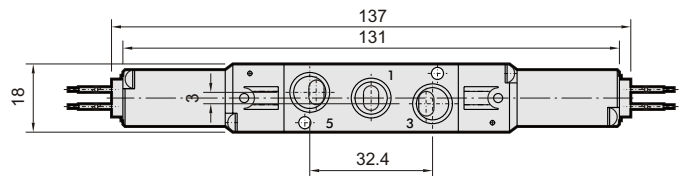
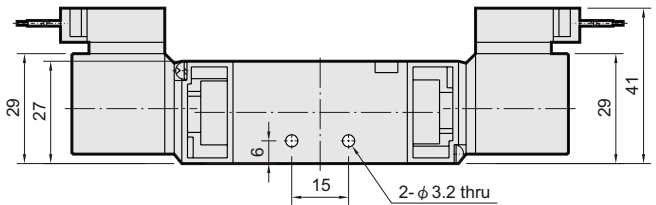
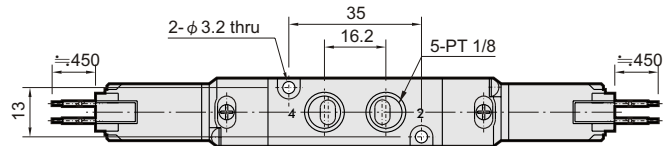
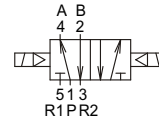
SOLENOID VALVE



MVSB-180-4E1-L

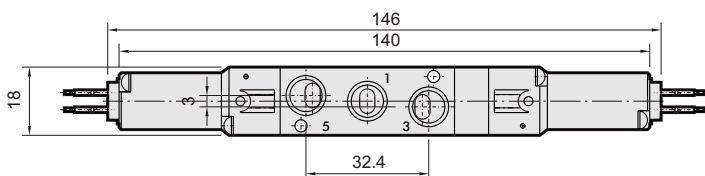
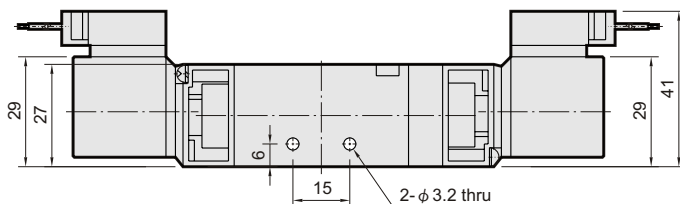
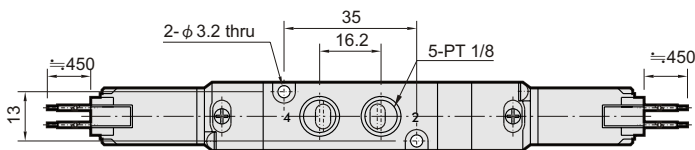
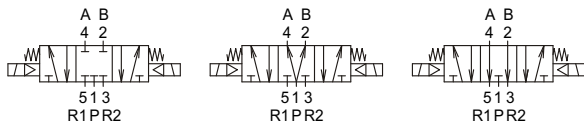


MVSB-180-4E2-L



MVSB-180-4E2C.P.R-L

MVSB-180-4E2C-L MVSB-180-4E2P-L MVSB-180-4E2R-L

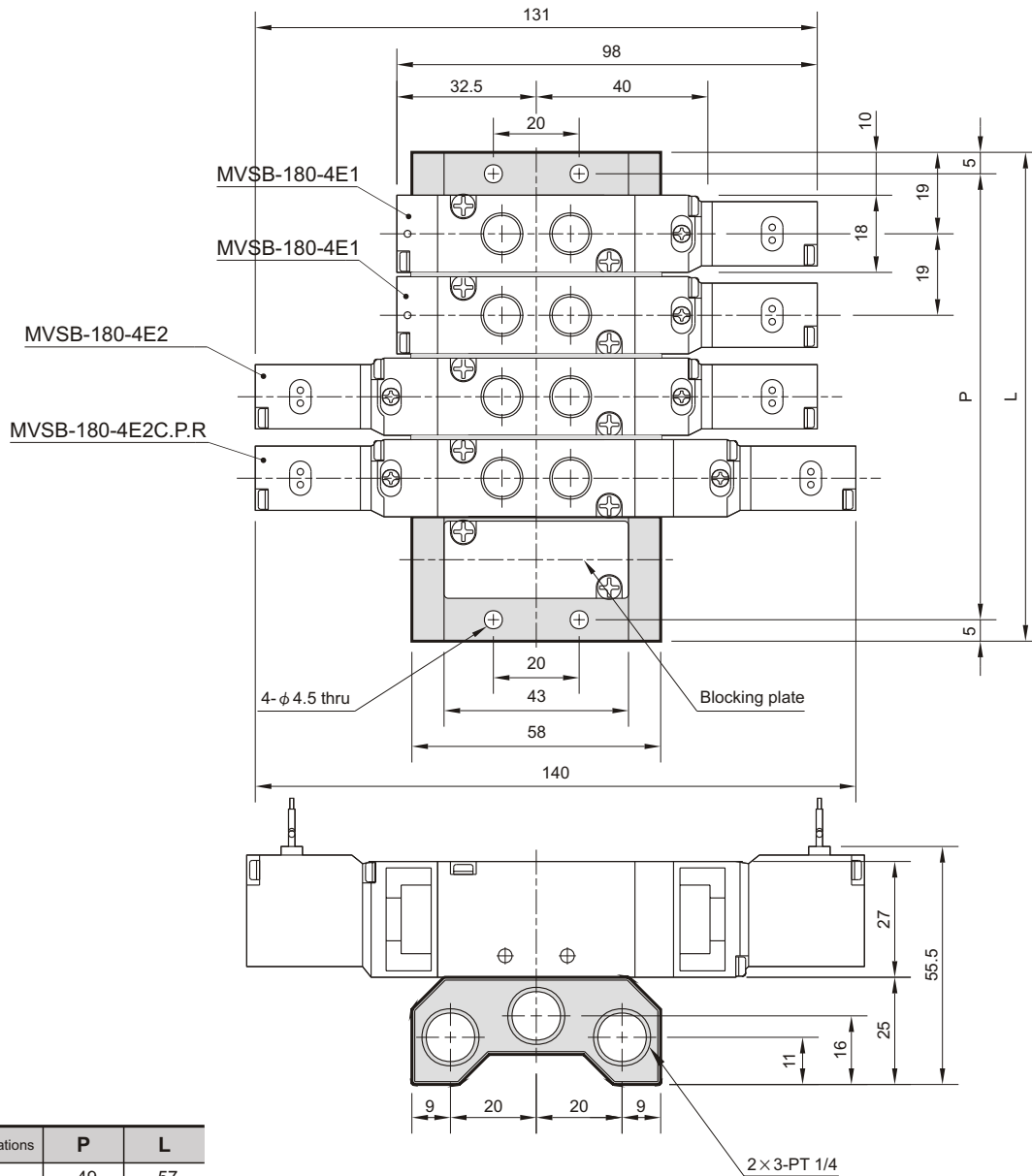


MVSB-180 Manifold

SOLENOID VALVE



MVSB-180-5B*



| No. of stations | P | L |
|-----------------|-----|-----|
| 2 | 49 | 57 |
| 3 | 68 | 76 |
| 4 | 87 | 95 |
| 5 | 106 | 114 |
| 6 | 125 | 133 |
| 7 | 144 | 152 |
| 8 | 163 | 171 |
| 9 | 182 | 190 |
| 10 | 201 | 209 |