

MVSN-300 series

NAMUR SOLENOID VALVE



mindman



(Explosion - proof type)

Specification

Model	4E1	4E2	4E2C.P.R.
Bore No.	8A		
Port size	G1/4		
No. of port	5		
No. of position	2	3	
Medium	Air		
Operating pressure range	0.2~0.7 MPa		0.3~0.7 MPa
Proof pressure	1 MPa		
Effective orifice	35 mm ²		30 mm ²
Response time	50 ms		
Ambient temperature	-5~+50°C (No freezing)		
Voltage	AC110V, 220V (50/60)Hz, DC24V		
Power consumption	AC=6/4.9VA, DC=2.5W		
Available voltage range	± 10%		
Insulation class	F class		
Weight	422 g	507 g	764 g

※ Port thread Rc. NPT. are also available.

Order example of valve

MVSN — 300 — 4E2C — AC110 — L

MODEL

BODY WIDTH

VOLTAGE

AC220V(50/60)Hz
AC110V(50/60)Hz
DC24V

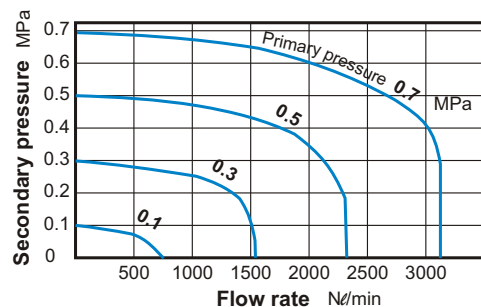
Blank: DIN connector
L: DIN connector with LED indicator
E: Explosion protection (Table 1)
W: Lead wire

4: 4way

E1: Single Solenoid
E2: Double Solenoid

C: Closed center
P: Pressure center
R: Exhaust center
(Only for 4E2 type)

Flow features



Order example of adapter

MVSN — 300 — A

MODEL

ADAPTER

Table 1

Property for explosion-proof type

Anti-explosion class	EEx m II T4
Voltage	AC110V, 220V, (50/60)Hz, DC24V.
Power consumption	AC=4.4VA DC=5W
Available voltage range	± 10%
Insulation class	F class



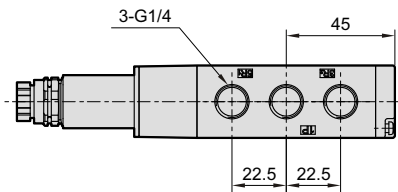
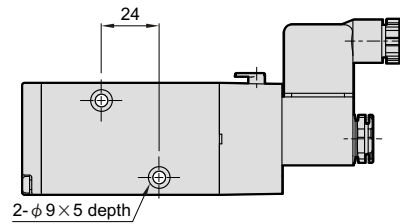
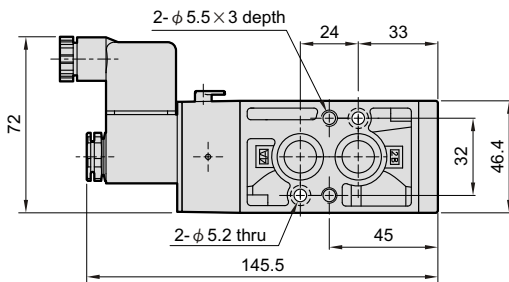
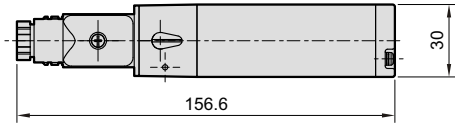
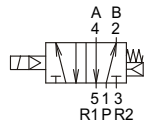
mindman

MVSN-300 Dimensions

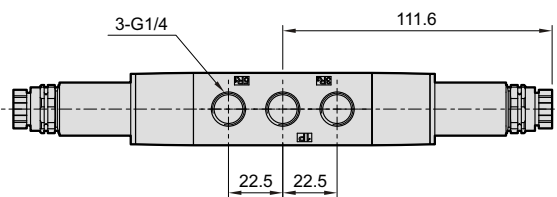
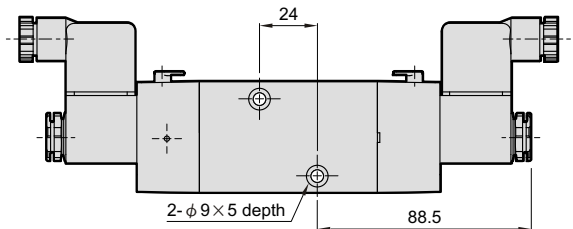
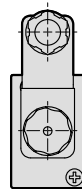
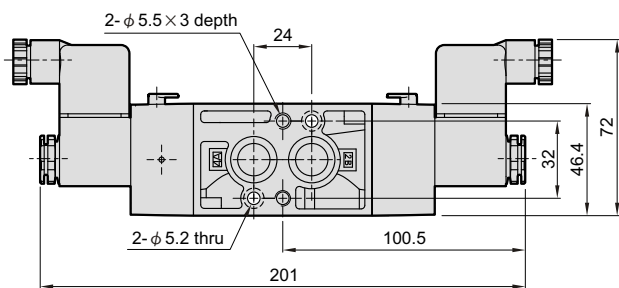
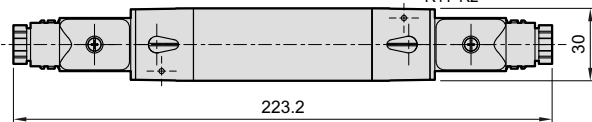
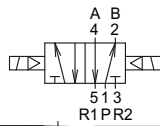
NAMUR SOLENOID VALVE



MVSN-300-4E1



MVSN-300-4E2



MVSN-300 Adapter

NAMUR SOLENOID VALVE



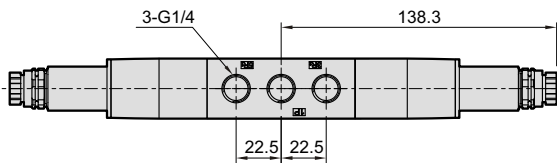
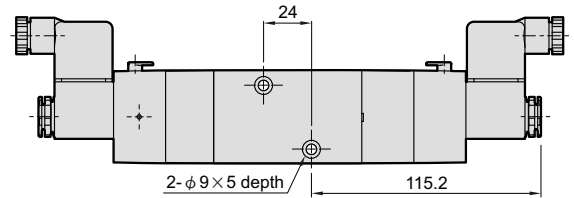
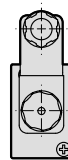
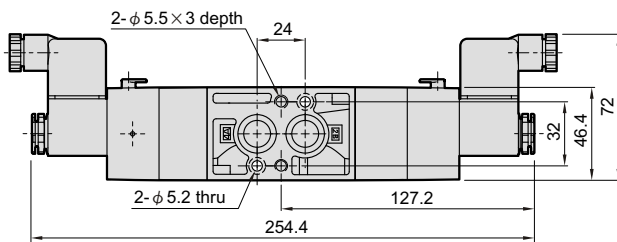
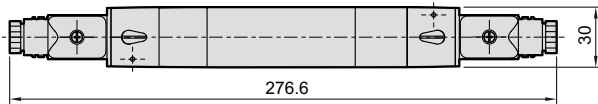
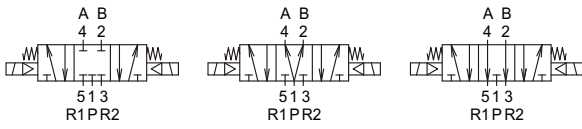
mindman

MVSN-300-4E2C.P.R

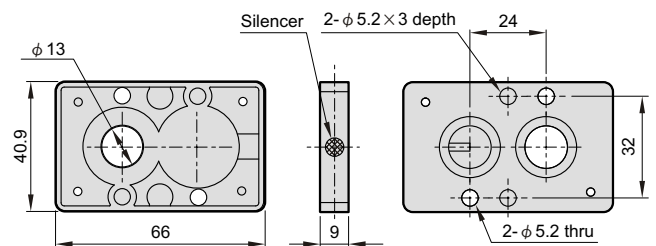
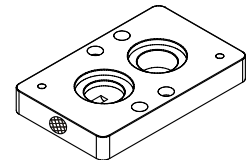
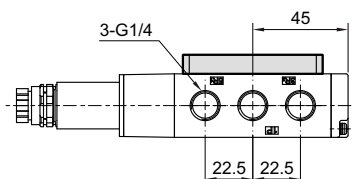
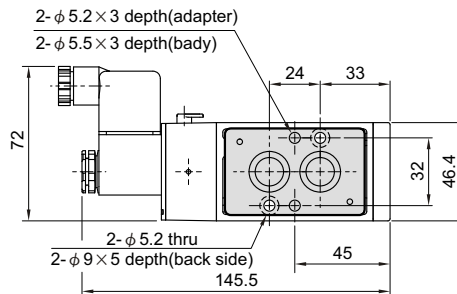
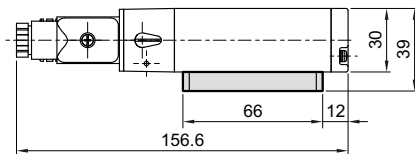
MVSN-300-4E2C

MVSN-300-4E2P

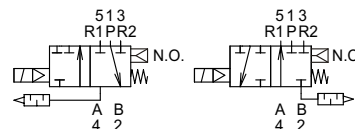
MVSN-300-4E2R



MVSN-300-A



- Solenoid valve without plate : 5/2 single acting
- Solenoid valve with plate : 3/2 single acting
- Silencer on the OPPOSITE side of the solenoid : NC
- Silencer on the SAME side of the solenoid : NO



mindman