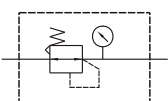


MAR200 series

AIR UNITS (R. UNIT)



Symbol:



Specification:

Model	MAR200	
Bore No.	6A	8A
Port size	PT 1/8	PT 1/4
Medium	Air	
Operating pressure range	0~9.9 kgf/cm ² (0~0.99 MPa)	
Proof pressure	15 kgf/cm ² (1.5MPa)	
Regulation pressure range	Standard type: 0.5~8.5 kgf/cm ² (0.05~0.85 MPa)	
Ambient temperature	-5~+60°C (No freezing)	
Attachment	Bracket	
Option	Pressure gauge	
Weight	190 g	

Order example:

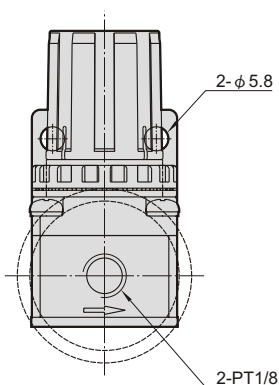
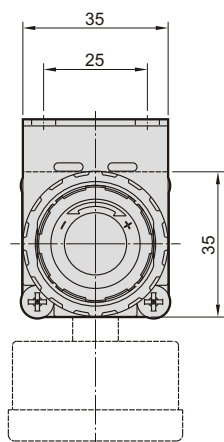
MAR200 — 6A — 1K — BSP

MODEL

BORE SIZE
6A: PT 1/8
8A: PT 1/4

Adjustable Press. Range
Blank: Standard Type
1K: 0~1 kgf/cm²
2K: 0~2 kgf/cm²
3K: 0~3 kgf/cm²
4K: 0~4 kgf/cm²

PORT THREAD
Blank: PT thread
BSP: BSP thread
NPT: NPT thread



Flow feature:

