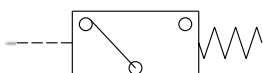


MPS series

PNEUMATIC PRESSURE SWITCH



Symbol:



Specification:

| Model | MPS-6A | MPS-6A-R |
|--------------------------|---|--------------------------------------|
| Fitting method | PT 1/8 (for pipe-thread fitting) | O-ring: S4 (for O-ring fitting) |
| Ambient temperature | -5~ +60°C (No freezing) | |
| Operating pressure range | 8.16 kgf/cm ² (8 Bar) | |
| Proof pressure | 10.2 kgf/cm ² (10 Bar) | |
| Pressure setting range | 1.02~7.14 kgf/cm ² (1~7 Bar) | |
| Operation output | Normal open ON (Red led lighting up) above value | |
| Sensor switch | RCE Reed switch / Normal open Voltage range: 5~220V DC/AC Max. Current: 50mA | |
| Weight | 185 g | 189 g |

Order example:

MPS - 6A - R

MODEL

Blank: By pipe-thread fitting
R: by O-ring fitting

