

MSC200/300 series

FLOW CONTROL VALVE



Specification:

Model	MSC200		MSC300	
Bore No.	6A	8A	10A	15A
Port size	PT 1/8	PT 1/4	PT 3/8	PT 1/2
Medium	Air			
Operating pressure range	0~9.9 kgf/cm ² (0~0.99 MPa)			
Proof pressure	15 kgf/cm ² (1.5 MPa)			
Ambient temperature	-5~+60°C (No freezing)			
Flow(ℓ/min)	800		1650	
Weight	72 g		130 g	

Order example:

MSC200 – 6A – BSP

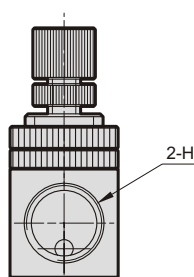
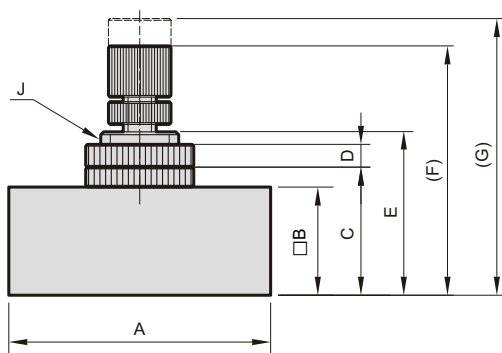
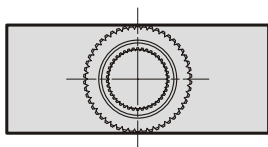
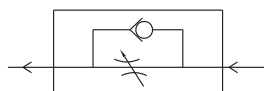
MODEL

BORE SIZE

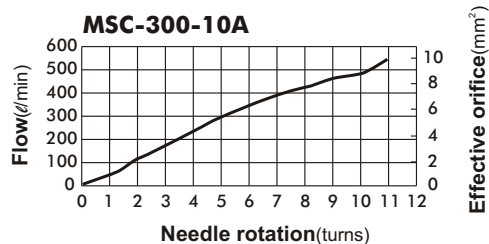
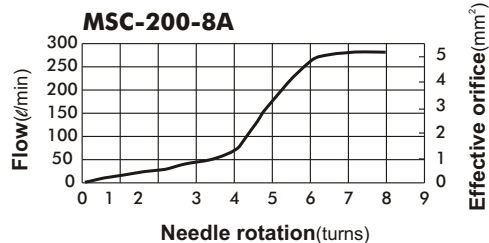
PORT THREAD

Blank: PT thread
BSP: BSP thread
 NPT: NPT thread

Symbol:



Flow feature :



Code Model	A	B	C	D	E	F	G	H	J	
MSC200	6A	46	19	22.5	4	28.7	43.8	48.6	PT 1/8	M14×1.25
	8A	46	19	22.5	4	28.7	43.8	48.6	PT 1/4	M14×1.25
MSC300	10A	56	25.4	30	4	37	53.7	62.5	PT 3/8	M18×1.0
	15A	56	25.4	30	4	37	53.7	62.5	PT 1/2	M18×1.0