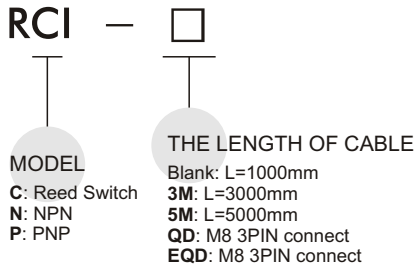


RCI series

SENSOR SWITCH



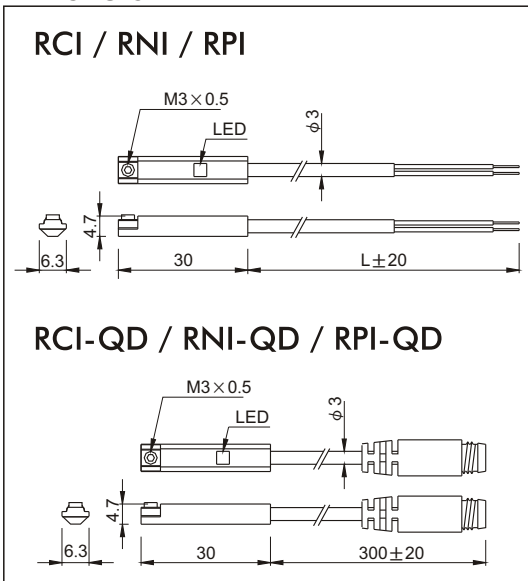
Order example:



Assembling style:

Cylinder type	MCQI
Mounting clamp	

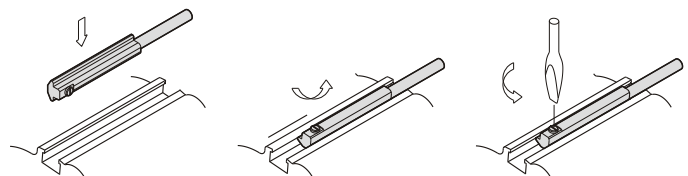
Dimension



Specification:

Model	RCI	RNI	RPI
Wiring	2 Wire	3 Wire	
Switch type	Reed switch	NPN current sinking	PNP current sourcing
Contracts	Normal open		
Voltage range	5~240V DC/AC	10~30V DC	
Current range	100mA max.		
Shock resistance	30G	50G	
Voltage drop	3.0V max.	2.0V max.	
Response time	Max. 2ms	Max. 1ms	
Temperature	-10~+70°C		
Lead wire	φ 3, 2C	φ 3, 3C	
Indicator lamp	LED lights up when ON		
Protection classification	ICE 529 IP67		
Indicator	Red LED	Red LED	Yellow LED
Current consumption	—	20 mA@24V DC max.	
Leakage current	—	0.05mA max.	
Vibration	90 m/s ² (9G), Double Amplitude 1.5 mm		
Insulation resistant	DC 500V 100MΩ (Lead wire to case)		
Withstand voltage	AC 1000V (50/60Hz) 1 minute (Lead wire to case)		
Protection circuit	None	Yes	
Symbol			

Mounting:



M8 QD Pinout

