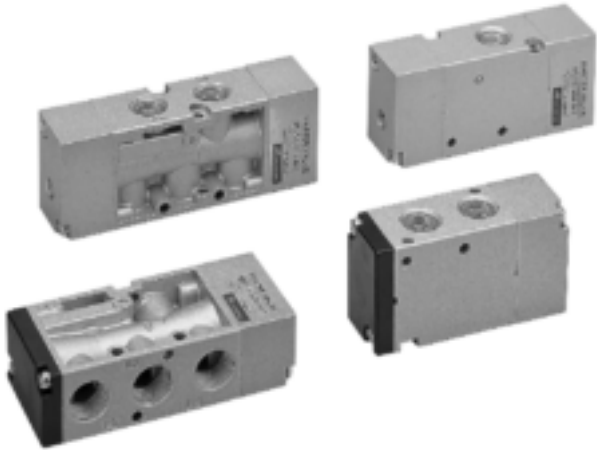


# MVAA-300 series

MASTER VALVE



## Specification:

Model	MVAA-300-3A1,A2	MVAA-300-4A1,A2	
Bore No.	10A		
Port size	PT 3/8		
No. of port	3	5	
Medium	Air		
Operating pressure range	0~8 kgf/cm <sup>2</sup>		
Proof pressure	10 kgf/cm <sup>2</sup>		
Effective orifice	35 mm <sup>2</sup>		
Pilot pressure range	2~7 kgf/cm <sup>2</sup>		
Ambient temperature	-5~+60°C (No freezing)		
Weight	295 g	324 g	236 g 301 g

## Order example:

MVAA - 300 - 4A2 - NC - BSP

MODEL

BODY WIDTH

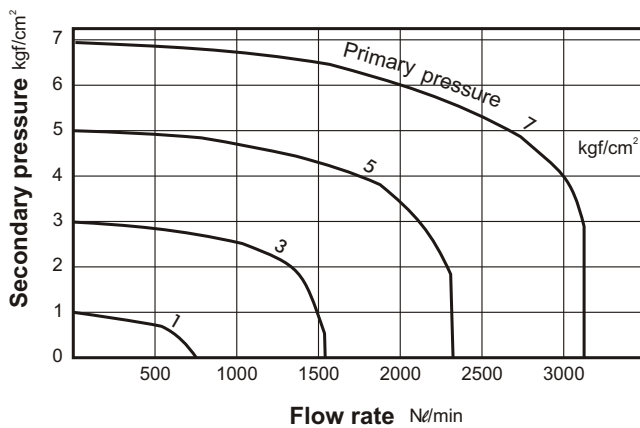
3: 3way  
4: 4way

A1: Single Air Operate  
A2: Double Air Operate

NC: Normally closed  
NO: Normally open  
(Only for 3A1 type)

PORT THREAD  
Blank: PT thread  
BSP: BSP thread  
NPT: NPT thread

## Flow features:



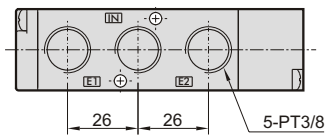
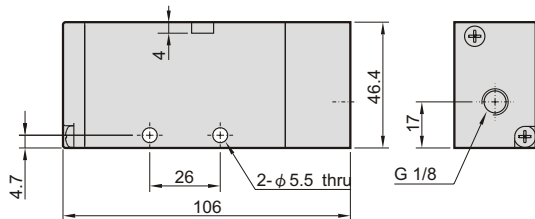
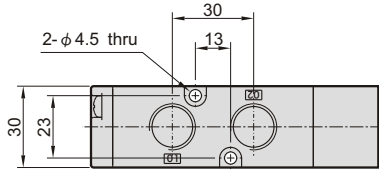
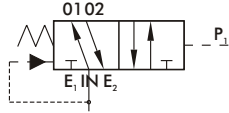
# MVAA-300

MASTER VALVE

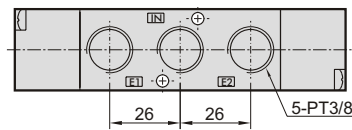
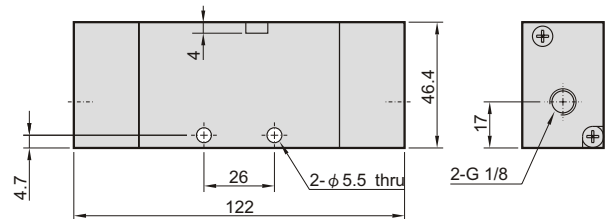
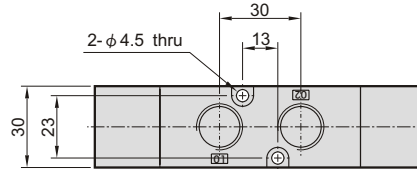


## Dimensions:

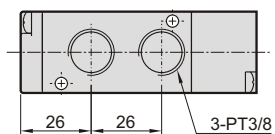
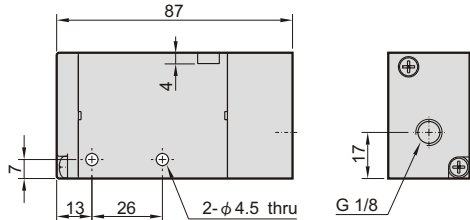
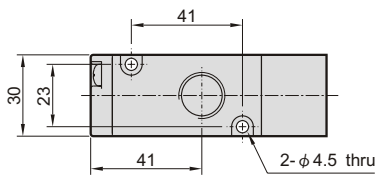
### MVAA-300-4A1



### MVAA-300-4A2



### MVAA-300-3A1-NC



### MVAA-300-3A2

