

MVHB-220 series

HAND VALVE



Specification:

Model	MVHB-220-4TV MVHB-220-4TV-SP	MVHB-220-4TV* MVHB-220-4TV*-SP
Bore No. (Port size)	8A (PT 1/4)	
No. of port	5	
No. of position	2	3
Medium	Air	
Operating pressure range	0~9.9 kgf/cm ²	
Effective orifice	18 mm ²	16 mm ²
Ambient temperature	-5~+60°C (No freezing)	
Weight	193 g	234 g

Order example:

MVHB - 220 - 4TVC - SP - M - BSP

MODEL

BODY WIDTH

4way

VALVE TYPE

SPRING RETURN

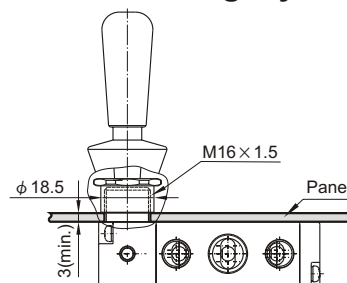
Blank: Standard type
M: Panel mounting

PORT THREAD

Blank: PT thread
BSP: BSP thread
NPT: NPT thread

Blank: 5/2
C: Close center (5/3)
P: Pressure center (5/3)
R: Exhaust center (5/3)

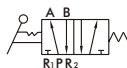
Panel mounting style



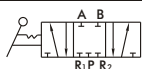
MVHB-220-4TV



MVHB-220-4TV-SP



MVHB-220-4TVC



MVHB-220-4TVP



MVHB-220-4TVR



MVHB-220-4TVC-SP



MVHB-220-4TVP-SP



MVHB-220-4TVR-SP

