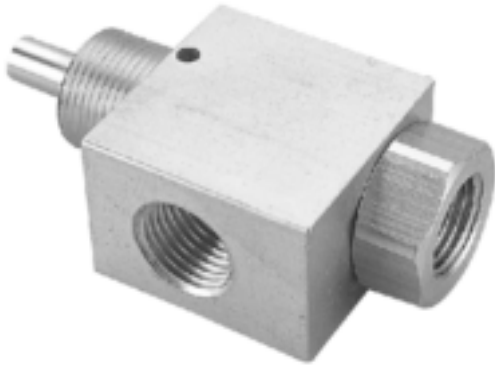


MVHF-3P-NO

MECHANICAL VALVES



Specification:

Type	normally OPEN 3-way poppet
Medium	Air
Stem travel	1/8"
Input pressure	150 psig max.
Effective orifice	5.7 mm ²
Force for full stem travel	38 oz. nominal
Temperature range	32°F~230°F
Ports	Input: 1/8"BSP Output: 1/8"BSP
Exhaust	Hole to atmosphere
Mounting	15/32-32 male thread nuts and lock washers furnished
Weight	69 g

※ Port thread NPT. are also available.

