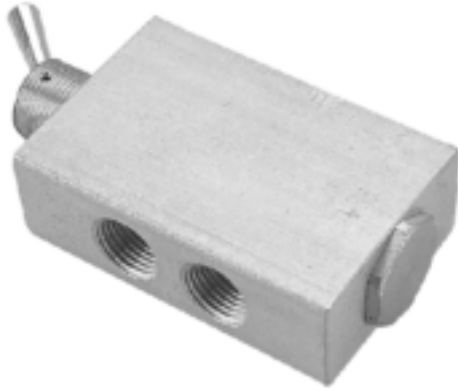


MVHF-5V

MECHANICAL VALVES



Specification:

Type	4-way spool valve toggle actuated two position 5 ported
Medium	Air, water, oil
Arc of travel	80°
Input pressure	150 psig max.
Effective orifice	4.3 mm ²
Force for full stem travel	3 oz. nominal
Temperature range	32°F~230°F
Ports	Input: 1/8" BSP Output: 1/8" BSP Exhaust: 1/8" BSP
Mounting	15/32-32 male thread nuts and lock washers furnished
Weight	172 g

※ Port thread NPT. are also available.

