

## STANDARD CYLINDERS

### MCQA series

(Japan type)  
Bore size :  $\phi 40 \sim \phi 200$   
Double acting

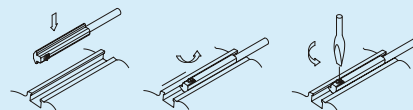


### MCQI2 series

(ISO-6431 / VDMA24562 Profile type)  
Bore size :  $\phi 32 \sim \phi 100$   
Double acting

- With four grooves on the tube for sensor switch to be inserted into, position can be adjusted as needed.

#### Installation of sensor switch:



### MCQV / MCQV2 series

(ISO-6431 / VDMA24562 Tie rod type)  
Bore size :  $\phi 32 \sim \phi 160$   
Double acting



### MCQN series

(NFPA type)  
Bore size :  $\phi 1 \frac{1}{2} \sim \phi 4$   
Double acting



## AIR/OIL CONVERTER

### MCQA-AH series

Bore size :  $\phi 40 \sim \phi 150$

- Consider cylinder thrust force is about 70%(50% high speed) of theoretical force.
- Displacement is suggested about 50% of total volume.
- Max. oil ascending speed is about 200mm / sec
- Recommend ISO VG32 equivalent oil.
- Oil is feeded not exceeding 80% of total volume.
- Installed vertically and above actuator cylinder.



### MCB series

Bore size :  $\phi 20 \sim \phi 125$



**MCBQV2 series** Bore size :  $\phi 32 \sim \phi 100$   
**MCBQV series** Bore size :  $\phi 125$   
**MCBQI2 series** Bore size :  $\phi 32 \sim \phi 100$   
Double acting



### MCQV2L series

#### End lock type

Bore size :  $\phi 63, \phi 80$



## CYLINDER KITS

- We can supply your company with full cylinder assembly kits which meet NFPA, ISO-VDMA and JIS internationally recognizable standards.
- Assembly kits include all necessary components to enable rapid assembly and despatch in order that you can meet your customers delivery schedules.
- Piston rod, tie rod and tubes are also available.

#### Series: Component parts & Repair kits

**MCQA** Standard cylinders

**MCQN** Standard cylinders (inch)

**MCQV2** ISO-VDMA Standard cylinders

**MCQI2** ISO-VDMA Standard profile cylinders



#### ● NON-LUBRICATION:

Designs of oil-filled alloy special housing and bushing provide the needed self-lubrication of piston rod.

#### ● HIGH QUALITY-LONG SERVICE LIFE:

Hard anodized aluminum cylinder tubes resist corrosion and abrasion.

#### ● NON-STANDARD TYPE:

Non-standard type is also available. For example, Stroke out of specification, dust cap, rod front end dimension variation etc.

#### ● ISO-VDMA STANDARD SPECIFICATION:

Conformance to ISO-6431 & VDMA-24562 specification.  
Unified design, most parts of each type are interchangeable within the spec.

#### ● CYLINDER MOUNTINGS:

Available with a comprehensive selection of mountings for fixed or flexible installation.

#### ● In addition to Rc thread, G, NPT, also available.

#### ● COMPONENT KITS AVAILABILITY:

Available with separate supply of component kits, tube, rod, and tie rod to be able to assemble locally and enhance the delivery prospect.