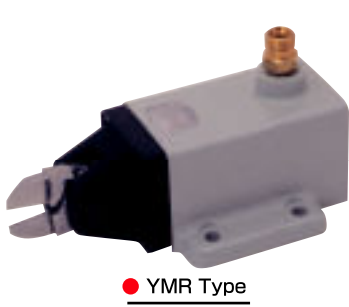


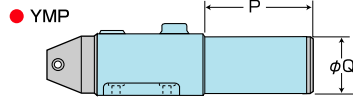
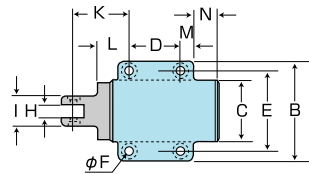
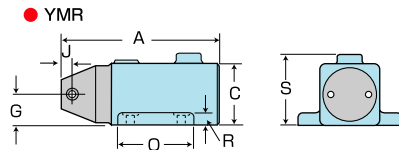
SETTING TYPE AIR CUTTERS

By installing these power cutters to your machineries, an automatic and continuous cutting can be achieved.

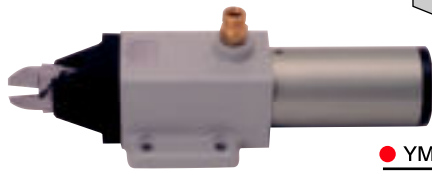
- **YMR, SMR, TMR, Type (Standard)**
- **YMP, SMP, TMP, Type (Heavy-duty)**



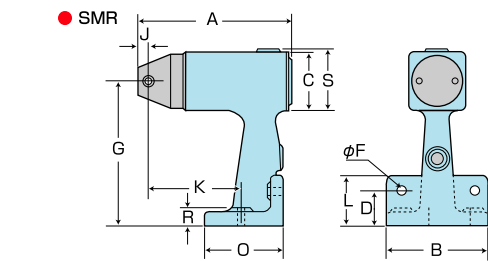
● **YMR Type**



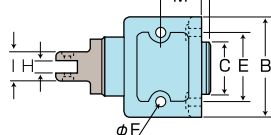
● **YMP Type**



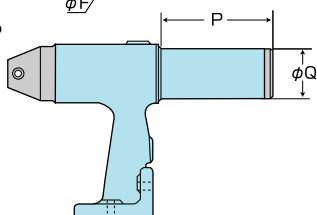
● **SMP Type**



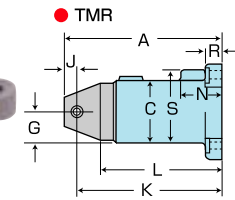
● **SMR Type**



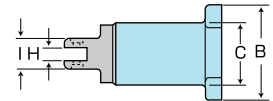
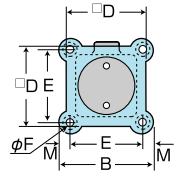
● **SMP**



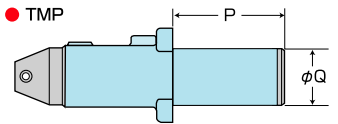
● **TMP Type**



● **TMR Type**



● **TMP**



○ All cutting blades for MR-series can be applicable in common.

Dimensions

(mm)

Model No.	A	B	C	D	E	F	G	H	I	J	K	L	M	N	O	P	Q	R	S	
YMR10	103	70	40	35	54	5.3	20	9	17	7	43	25	10	7	55	—	—	9	48	
TMR10	104	66	40	50	50	5.3	20	9	17	7	97	79	8	28	—	—	—	9	48	
SMR10	103	84	48	30	60	6.3	120	9	17	7	59	42	35	1	65	—	—	12	49	
YMR20	120	80	48	40	62	6.5	24	12	23	9	43	25	10	17	60	—	—	—	9	56
TMR20	121	74	48	60	56	6.5	24	12	23	9	112	94	9	32	—	—	—	12	57	
SMR20	121	84	48	30	60	6.3	120	12	23	9	71	42	35	5	65	—	—	12	49	
YMR30	158	106	66	50	85	6.3	35	17	30	10	60	38	15	21	80	—	—	12	74	
TMR30	160	98	66	78	76	6.3	33	17	30	10	150	128	11	37	—	—	—	12	72	
SMR30	158	86	66	30	60	8.3	120	17	30	10	100	45	45	1	80	—	—	12	67	
YMP15	103	70	40	35	54	5.3	20	9	17	7	43	25	10	7	55	72	36	9	48	
TMP15	104	66	40	50	50	5.3	20	9	17	7	97	79	8	28	—	—	70	36	9	48
SMP15	103	84	48	30	60	6.3	120	9	17	7	59	42	35	1	65	72	36	12	49	
YMP25	120	80	48	40	62	6.5	24	12	23	9	43	25	10	17	60	88	45	9	56	
TMP25	121	74	48	60	56	6.5	24	12	23	9	112	94	9	32	—	—	86	45	12	57
SMP25	121	84	48	30	60	6.3	120	12	23	9	71	42	35	5	65	88	45	12	49	
YMP35	158	106	66	50	85	6.3	35	17	30	10	60	38	15	21	80	94	56	12	74	
TMP35	160	98	66	78	76	6.3	33	17	30	10	150	128	11	37	—	—	90	56	12	72
SMP35	158	86	66	30	60	8.3	120	17	30	10	100	45	45	1	80	94	56	12	67	

Model No.	Weight	Air consumption	Air pressure	Power (approx.)	Blade No. * Carbide tipped	Cutting capacity ϕ mm			
						Steel wire	Copper wire	Plano wire	Plastics Soft Hard
YMR10	310g	116 cm ³ /Stroke	0.4~0.5 MPa	580 N	S4, EP4	1.0	1.6	—	—
TMR10	320g				* Z4	1.0	1.6	0.5	—
SMR10	770g				CR4	1.0	1.6	—	—
YMR20	470g	230 cm ³ /Stroke	0.5~0.6 MPa	1,370 N	S5, P6, EP6	2.0	2.6	—	—
TMR20	490g				* Z6	2.0	2.6	1.0	—
SMR20	770g				CR6	2.0	2.6	—	—
YMR30	1,240g	584 cm ³ /Stroke	0.5~0.6 MPa	2,740 N	S7P,P8P,EP10P	2.8	3.3	—	—
TMR30	1,260g				* Z8P, ZCR8P	2.8	3.3	1.2	—
SMR30	1,620g				CR8P	2.8	3.3	—	—
YMP15	420g	170 cm ³ /Stroke	0.3~0.35 MPa	735 N	S4, EP4	1.0	1.6	—	—
TMP15	430g				* Z4	1.0	1.6	0.5	—
SMP15	880g				CR4	1.0	1.6	—	—
YMP25	640g	400 cm ³ /Stroke	0.4~0.5 MPa	1,960 N	S5, P6, EP6	2.0	2.6	—	—
TMP25	660g				* Z6	2.0	2.6	1.0	—
SMP25	940g				CR6	2.0	2.6	—	—
YMP35	1,560g	956 cm ³ /Stroke	0.5~0.6 MPa	4,410 N	S7P,P8P,EP10P	4.0	4.8	—	—
TMP35	1,580g				* Z8P, ZCR8P	4.0	4.8	1.2	—
SMP35	1,940g				CR8P	4.0	4.8	—	—
					F9P, FD9P, F9PS	—	—	—	—