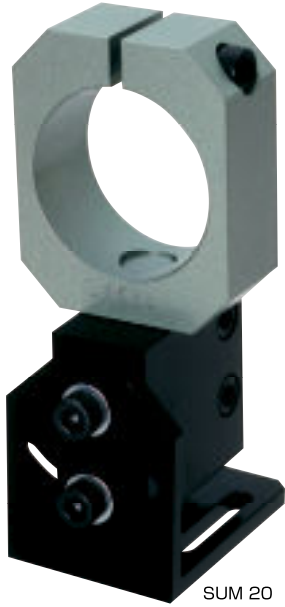


STAND-HOLDER FOR MACHINE-INSTALLATION



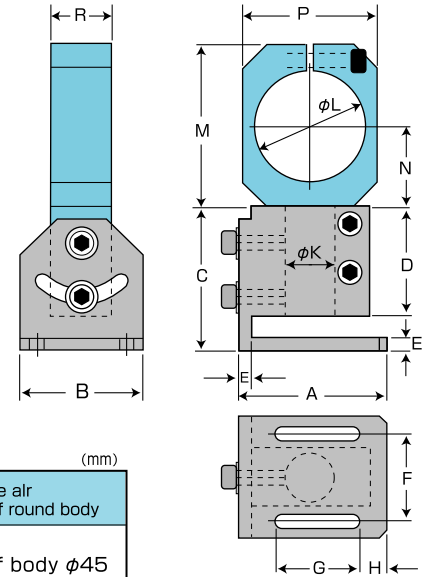
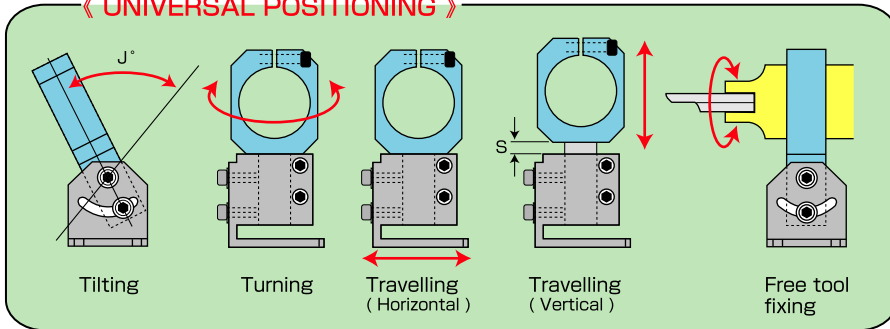
SVM 20



View of a tool mounted

SVM 30

《 UNIVERSAL POSITIONING 》



Dimensions

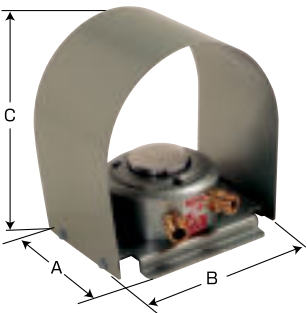
Model No.	Weight	A	B	C	D	E	F	G	H	J (MAX)	K	L	M	N	P	R	S (MAX)	Applicable air cutters of round body
SVM 20	325g	60	50	59	45	5	36	34	11	90°	20	45.1	67	33	55	24	15	MR20M series of body $\phi 45$
SVM 30	367g	60	50	59	45	5	36	34	11	90°	20	56.1	78	38	70	24	15	MR30AM series of body $\phi 56$

(mm)

FOOT VALVE

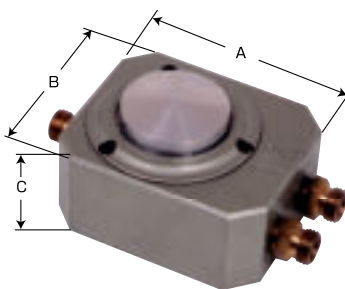
3-Port Foot Valve

● FB70S



4-Port Foot Valve

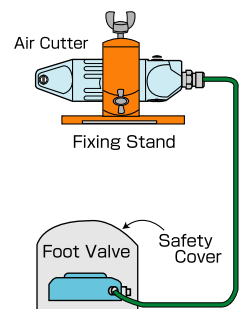
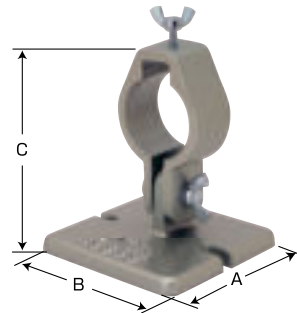
● FV80



FIXING STAND

《For MR20, MR30A & MP35A》

● Fixing stand



Dimensions

Model No.	Weight	A	B	C	Applicable tools
FB70S	970 g	110 mm	122 mm	145 mm	
FV80	600 g	83 mm	69 mm	48 mm	
FIXING STAND	600 g	140 mm	120 mm	118 mm	For MR20, MR20M
FIXING STAND	500 g	140 mm	120 mm	118 mm	For MR30A, MP30AM