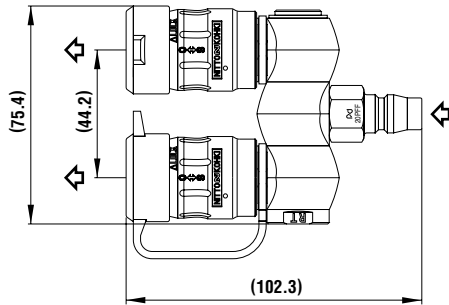


Models and Dimensions

Socket FBH-RT type (for two branch lines)

- Inlet : 1/4" Hi Cupla (20PFF)
- Outlet : Full-Blow Cupla
- Mass : 297g
- Fluid must run in the direction of the arrow.

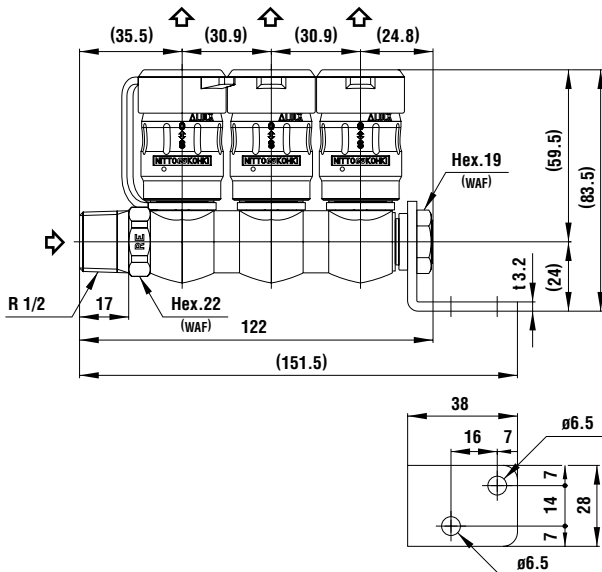


• The product comes with dust caps.

Dimensions (mm)

Socket FBH-RE type (for three branch lines)

- Inlet : R 1/2
- Outlet : Full-Blow Cupla
- Mass : 499g
- Fluid must run in the direction of the arrow.



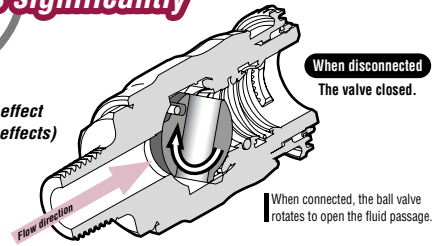
• The product comes with dust caps.

Dimensions (mm)

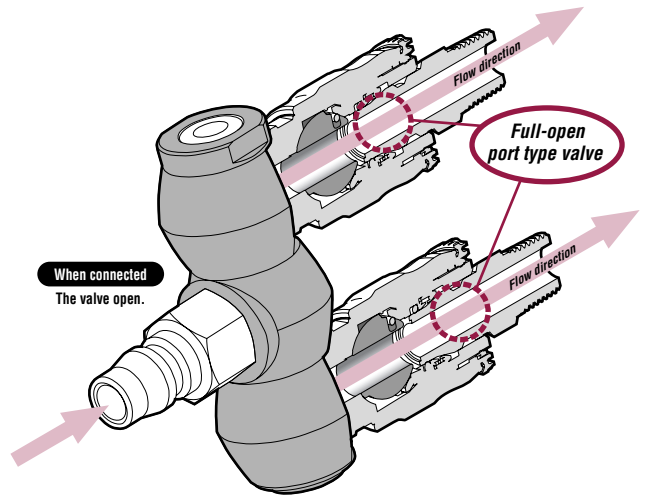
Features of Rotary Full-Blow Line Cupla

Flow rate is significantly increased.

Significant energy saving effect (Source pressure reduction effects)

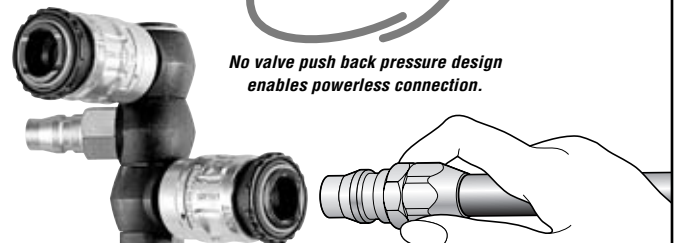


When connected, the ball valve rotates to open the fluid passage.



Far easier operation

No valve push back pressure design enables powerless connection.



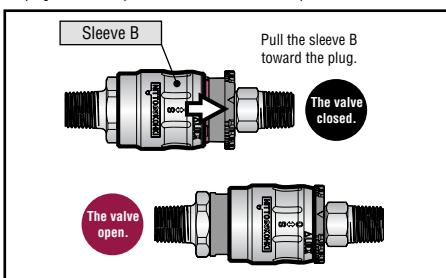
Increased safety operation

Purge function eliminates unpleasant pop and hose whipping motion.

How it works

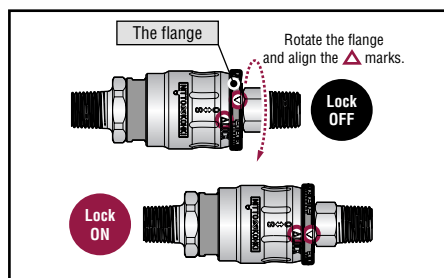
1. Open the valve

Only after connection with the plug, you can slide the socket sleeve B toward the plug in order to open the built-in valve. Full flow path is then obtained.



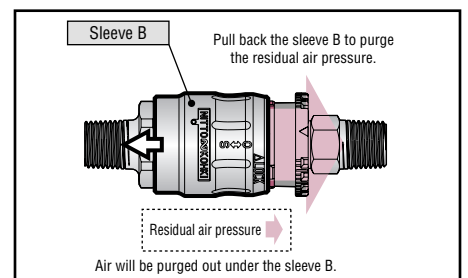
2. Lock the sleeve

Rotate the flange to lock the sleeve B. Without unlocking the plug you cannot disconnect.



3. Purge the residual air

To disconnect the plug, first turn the flange back to the original position for unlocking and then pull the sleeve B back to the original position. The built-in valve will be closed to purge the residual air pressure.



Before use, please be sure to read "Safety Guide" described at the end of this book and "Instruction Sheet" that comes with the products.