

For Air

# Cube Cupla

Small and lightweight coupling for air supply lines to medical and/or scientific equipment

<b>Working pressure</b> 1.0 1.0 MPa (10 kgf/cm <sup>2</sup> )	<b>Valve structure</b> Two-way shut-off	<b>Valve structure</b> One-way shut-off	<b>Valve structure</b> Straight through	<b>Applicable fluids</b> Air  Water
--	--	--	--	--



Specifications				
Body material	Polyacetal resin (POM)			
Size	4mm and 6mm ID tube, female thread Rc 1/8			
Working pressure MPa (kgf/cm <sup>2</sup> )	1.0 (10)			
Pressure resistance MPa (kgf/cm <sup>2</sup> )	1.5 (15)			
Seal material	Seal material	Mark	Working temperature range	Remarks
Working temperature range	Nitrile rubber	NBR (SG)	-5°C~+60°C	Standard material

Max. Tightening Torque		N·m {kgf·cm}
Size	1/8"	
Torque	1.3 {13}	

**Flow Direction**

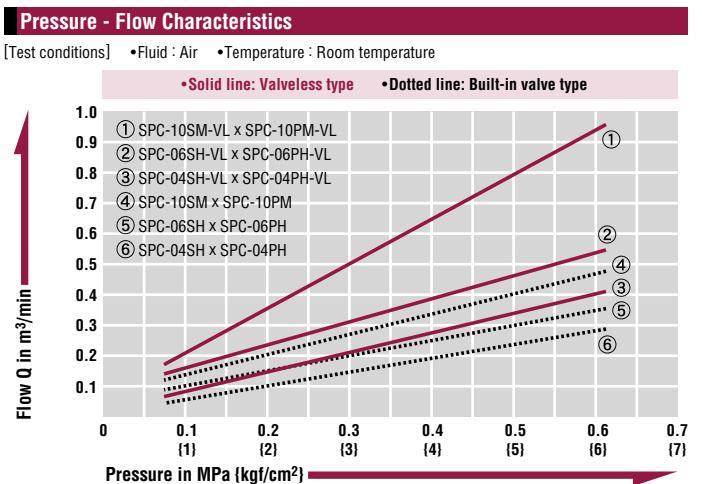
Fluid may flow in either direction from plug or from socket side when coupled.

**Interchangeability**

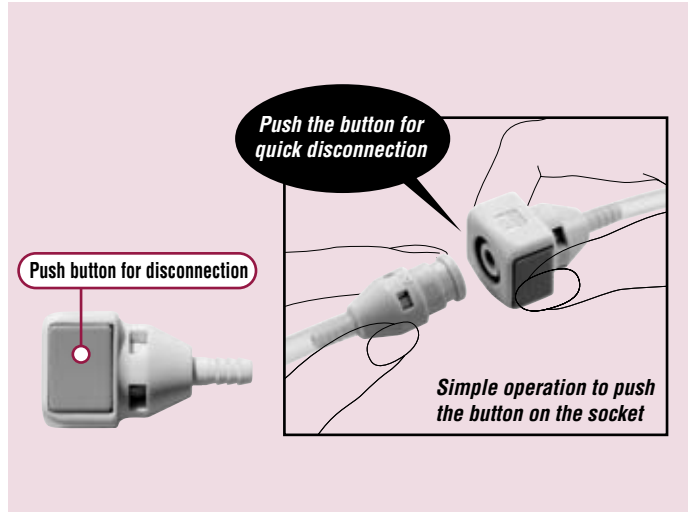
Can be connected with plug and socket of Cube Cupla of the same type regardless of end configurations. However, built-in valve sockets cannot be connected with valveless plugs.

Min. Cross-Sectional Area (mm <sup>2</sup> )						
Model	04PH/04PHB	06PH/06PHB	10PM	04PH-VL/04PHB-VL	06PH-VL/06PHB-VL	10PM-VL
SPC-04SH	5	5	5	—	—	—
SPC-06SH	5	8.6	8.6	—	—	—
SPC-10SM	5	8.6	8.6	—	—	—
SPC-04SH-VL	5	5	5	5	5	5
SPC-06SH-VL	5	8.6	8.6	5	10.2	10.2
SPC-10SM-VL	5	8.6	8.6	5	10.2	16.6

Suitability for Vacuum			53.0kPa {400mmHg}
Socket only	Plug only	When connected	
—	—	Operational	



Connection capability				Select the combination of models suitable to your applications		
Connection capability		Plug				
		Valve	With	Without		
Socket	With	With	Two-way shut-off	Without	Not connectable	
	Without	Without	One-way shut-off	Without	Straight through	



**Both socket and plug have built-in valve types and valveless types. Simple one action for connection or disconnection. Lightweight plastic coupling.**

- Compact design for space saving.
- Just push plug into socket for connection. Simply push the button on the socket for disconnection.
- Suitable for a wide range of applications from medical/scientific equipment to beverage machines or semiconductor manufacturing devices.

Note: When valveless type socket or plug is used, fluid will flow out of it when disconnected.