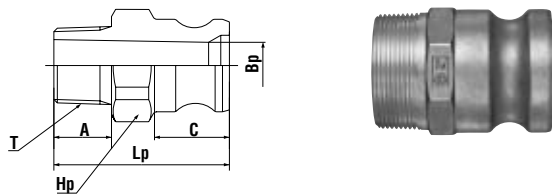


Dimensions of products may differ according to body material. / WAF : WAF stands for width across flats.

Models and Dimensions

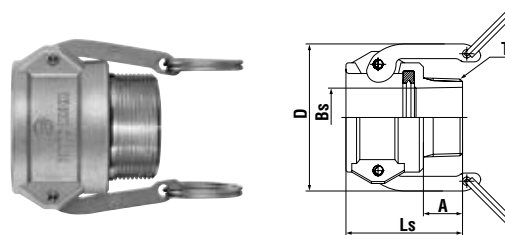
Plug LF type (Male thread)



| material | Model | Size | Mass (g) | Dimensions (mm) | | | | | Oct. stands for octagon. Dod.stands for dodecagon. | |
|-----------------|--------------|---------|----------|-----------------|------|------|---------|--------|--|-------|
| | | | | Lp | A | C | Hp(WAF) | øBp | T | |
| Aluminum alloy | LF-6TPM | 3/4" | 70 | 61 | 20 | 26 | Hex.36 | 16 | R 3/4 | |
| | LF-8TPM | 1" | 90 | 73 | 24 | 34 | Hex.41 | 22 | R 1 | |
| | LF-10TPM | 1 1/4" | 140 | 81 | 26 | 40 | Hex.50 | 28 | R1 1/4 | |
| | LF-12TPM | 1 1/2" | 150 | 80.5 | 24 | 42 | Oct.55 | 34.5 | R1 1/2 | |
| | LF-16TPM | 2" | 220 | 89.5 | 27 | 48 | Oct.65 | 44.5 | R 2 | |
| | LF-20TPM | 2 1/2" | 370 | 101 | 32 | 50 | Oct.80 | 56 | R2 1/2 | |
| | LF-24TPM | 3" | 470 | 106 | 31 | 52 | Dod.99 | 73 | R 3 | |
| | LF-32TPM | 4" | 875 | 116 | 34 | 54 | Dod.130 | 100 | R 4 | |
| | Copper alloy | LF-6TPM | 3/4" | 185 | 59 | 20 | 27 | Hex.34 | 20 | R 3/4 |
| LF-8TPM | | 1" | 280 | 69 | 21.5 | 32 | Hex.41 | 24 | R 1 | |
| LF-10TPM | | 1 1/4" | 460 | 81 | 26 | 40 | Hex.50 | 28 | R1 1/4 | |
| LF-12TPM | | 1 1/2" | 500 | 81 | 24 | 42 | Oct.55 | 36 | R1 1/2 | |
| LF-16TPM | | 2" | 750 | 89.5 | 27 | 48 | Oct.65 | 45 | R 2 | |
| LF-20TPM | | 2 1/2" | 1290 | 98 | 28 | 50 | Dod.83 | 56 | R2 1/2 | |
| LF-24TPM | | 3" | 1480 | 103 | 30 | 50.8 | Dod.96 | 73 | R 3 | |
| LF-32TPM | | 4" | 3155 | 113 | 35 | 53 | Dod.126 | 100 | R 4 | |
| Stainless steel | | LF-6TPM | 3/4" | 175 | 59 | 19 | 27 | Oct.33 | 19 | R 3/4 |
| | LF-8TPM | 1" | 255 | 69 | 21 | 33 | Oct.41 | 24 | R 1 | |
| | LF-10TPM | 1 1/4" | 415 | 80 | 24 | 42 | Oct.50 | 29.5 | R1 1/4 | |
| | LF-12TPM | 1 1/2" | 575 | 80 | 24 | 40 | Oct.58 | 36.5 | R1 1/2 | |
| | LF-16TPM | 2" | 735 | 87 | 24 | 47 | Oct.69 | 46 | R 2 | |
| | LF-20TPM | 2 1/2" | 1020 | 99 | 28 | 49 | Dod.83 | 56 | R2 1/2 | |
| | LF-24TPM | 3" | 1415 | 103 | 30.5 | 51 | Dod.96 | 73 | R 3 | |
| | LF-32TPM | 4" | 2275 | 112 | 33 | 53 | Dod.124 | 100 | R 4 | |

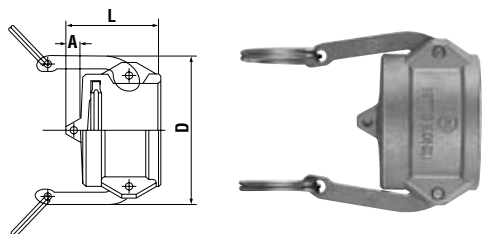
Socket LB type (Male thread)

Body materials other than aluminum alloy are made-to-order items.



| material | Model | Size | Mass (g) | Dimensions (mm) | | | | |
|--------------------------------------|-----------------------------------|---------|----------|-----------------|------|------|------|--------|
| | | | | Ls | A | D | øBs | T |
| Aluminum alloy | LB-6TSM | 3/4" | 110 | 53 | 20 | 60.5 | 17 | R 3/4 |
| | LB-8TSM | 1" | 170 | 65 | 24 | 61 | 23.5 | R 1 |
| | LB-10TSM | 1 1/4" | 310 | 72 | 26 | 82 | 29.5 | R1 1/4 |
| | LB-12TSM | 1 1/2" | 340 | 71.5 | 24 | 90 | 36 | R1 1/2 |
| | LB-16TSM | 2" | 400 | 79.5 | 27 | 100 | 46 | R 2 |
| | LB-20TSM | 2 1/2" | 530 | 88.5 | 32 | 112 | 57.5 | R2 1/2 |
| | LB-24TSM | 3" | 715 | 90 | 31 | 139 | 76 | R 3 |
| | LB-32TSM | 4" | 920 | 92 | 33.5 | 165 | 99 | R 4 |
| | Copper alloy (Made-to-order item) | LB-6TSM | 3/4" | 260 | 52 | 18 | 53 | 19.5 |
| LB-8TSM | | 1" | 355 | 63 | 22 | 62 | 26 | R 1 |
| LB-10TSM | | 1 1/4" | 620 | 71 | 24 | 84 | 28 | R1 1/4 |
| LB-12TSM | | 1 1/2" | 700 | 71 | 25 | 91 | 36 | R1 1/2 |
| LB-16TSM | | 2" | 950 | 81 | 24 | 100 | 51 | R 2 |
| LB-20TSM | | 2 1/2" | 1250 | 86 | 32 | 113 | 63 | R2 1/2 |
| LB-24TSM | | 3" | 1780 | 92 | 33 | 139 | 78 | R 3 |
| LB-32TSM | | 4" | 2540 | 98 | 40 | 168 | 101 | R 4 |
| Stainless steel (Made-to-order item) | | LB-6TSM | 3/4" | 210 | 52.5 | 19 | 55 | 20 |
| | LB-8TSM | 1" | 300 | 63 | 23.5 | 63 | 25.5 | R 1 |
| | LB-10TSM | 1 1/4" | 520 | 70.5 | 24.5 | 85 | 34 | R1 1/4 |
| | LB-12TSM | 1 1/2" | 580 | 71.5 | 24 | 87 | 38 | R1 1/2 |
| | LB-16TSM | 2" | 780 | 78.5 | 24 | 101 | 50.5 | R 2 |
| | LB-20TSM | 2 1/2" | 980 | 84 | 31 | 113 | 66 | R2 1/2 |
| | LB-24TSM | 3" | 1490 | 92 | 32 | 139 | 78.5 | R 3 |
| | LB-32TSM | 4" | 2080 | 92 | 34.5 | 167 | 92 | R 4 |

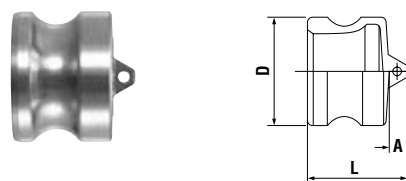
Plug L-PD type (Plug cap)



| material | Model | Size | Mass (g) | Dimensions (mm) | | |
|-----------------|--------------|--------|----------|-----------------|------|-----|
| | | | | L | A | D |
| Aluminum alloy | L-6PD | 3/4" | 100 | 46 | 12 | 54 |
| | L-8PD | 1" | 145 | 54 | 12 | 62 |
| | L-10PD | 1 1/4" | 230 | 60 | 13 | 83 |
| | L-12PD | 1 1/2" | 295 | 68 | 17 | 91 |
| | L-16PD | 2" | 360 | 68 | 11 | 100 |
| | L-20PD | 2 1/2" | 435 | 72 | 15 | 113 |
| | L-24PD | 3" | 690 | 72 | 10 | 139 |
| | L-32PD | 4" | 870 | 76 | 15 | 167 |
| | Copper alloy | L-6PD* | 3/4" | 220 | 45 | 11 |
| L-8PD* | | 1" | 315 | 53 | 12 | 62 |
| L-10PD | | 1 1/4" | 610 | 57 | 11 | 84 |
| L-12PD | | 1 1/2" | 645 | 69 | 17.5 | 91 |
| L-16PD | | 2" | 830 | 68 | 11 | 100 |
| L-20PD | | 2 1/2" | 980 | 71 | 14 | 113 |
| L-24PD | | 3" | 1380 | 81 | 20 | 139 |
| L-32PD | | 4" | 2700 | 90 | 26 | 168 |
| Stainless steel | | L-6PD | 3/4" | 180 | 45 | 12 |
| | L-8PD | 1" | 265 | 52 | 11 | 63 |
| | L-10PD | 1 1/4" | 475 | 60 | 12 | 85 |
| | L-12PD | 1 1/2" | 545 | 63 | 15 | 87 |
| | L-16PD | 2" | 720 | 65 | 11 | 101 |
| | L-20PD | 2 1/2" | 945 | 71 | 15 | 113 |
| | L-24PD | 3" | 1420 | 72 | 12 | 139 |
| | L-32PD | 4" | 2055 | 77 | 14 | 167 |

Socket L-SD type (Socket cap)

* No ring hole.



| material | Model | Size | Mass (g) | Dimensions (mm) | | |
|-----------------|--------------|--------|----------|-----------------|----|-------|
| | | | | L | A | øD |
| Aluminum alloy | L-6SD* | 3/4" | 35 | 32 | 8 | 32 |
| | L-8SD* | 1" | 45 | 44 | 10 | 36.7 |
| | L-10SD | 1 1/4" | 70 | 57 | 14 | 45.5 |
| | L-12SD | 1 1/2" | 90 | 54 | 15 | 53.4 |
| | L-16SD | 2" | 140 | 62 | 13 | 63 |
| | L-20SD | 2 1/2" | 210 | 69 | 20 | 75.8 |
| | L-24SD | 3" | 290 | 71 | 15 | 91.5 |
| | L-32SD | 4" | 960 | 74 | 16 | 119.4 |
| | Copper alloy | L-6SD | 3/4" | 160 | 34 | 8 |
| L-8SD | | 1" | 150 | 44 | 10 | 36.7 |
| L-10SD | | 1 1/4" | 210 | 55 | 12 | 45.5 |
| L-12SD | | 1 1/2" | 290 | 54 | 15 | 54 |
| L-16SD | | 2" | 420 | 61 | 12 | 63 |
| L-20SD | | 2 1/2" | 630 | 69 | 19 | 77 |
| L-24SD | | 3" | 860 | 71 | 15 | 91.5 |
| L-32SD | | 4" | 1780 | 74.5 | 16 | 119.5 |
| Stainless steel | | L-6SD | 3/4" | 95 | 39 | 12 |
| | L-8SD | 1" | 145 | 45 | 12 | 37 |
| | L-10SD | 1 1/4" | 250 | 51 | 10 | 45 |
| | L-12SD | 1 1/2" | 300 | 54 | 14 | 53 |
| | L-16SD | 2" | 490 | 58 | 11 | 63 |
| | L-20SD | 2 1/2" | 710 | 64 | 14 | 76 |
| | L-24SD | 3" | 930 | 68 | 14 | 92 |
| | L-32SD | 4" | 1275 | 68 | 14 | 120 |