

For Dialysis Fluid

Dialyzer Cupla

Plastic / Stainless Steel

For dialyzer fluid piping

| | | |
|---|-------------------------|----------------------------------|
| Working pressure | Valve structure | Applicable fluids |
| <p>0.06 MPa (0.6 kgf/cm²) 1.5 MPa (15 kgf/cm²)</p> | <p>Straight through</p> | <p>Dialysate Water Air</p> |



**Connect directly to dialysis fluid supply and discharge ports!
For quick dialyzer unit replacement.**

- Available with excellent corrosion-resistant stainless steel or light-weight plastic body.
- Simple, labor-saving connection/disconnection.

Specifications

| | | | | |
|--|--------------------------|-------------------------------|---------------------------|-------------------|
| Body material | Stainless Steel (SUS304) | Denatured polyphenylene ether | | |
| Size | 3/8" | ø6 x ø12 • ø8 x ø13.5 | | |
| Working pressure MPa (kgf/cm ²) | 1.5 (15) | 0.06 (0.6) | | |
| Pressure resistance MPa (kgf/cm ²) | 2.2 (22) | 0.08 (0.8) | | |
| Seal material Working temperature range | Seal material | Mark | Working temperature range | Remarks* |
| | Silicon rubber | SI | -40°C~+150°C | Standard material |
| | Fluoro rubber | FKM (X-100) | -20°C~+180°C | Standard material |

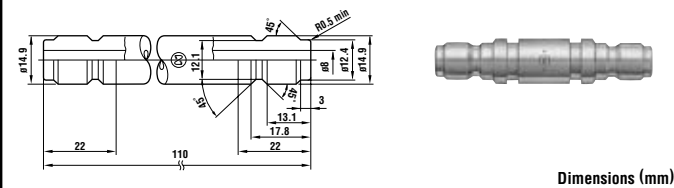
*Available are the combination of stainless steel body with fluoro rubber or denatured polyphenylene ether body with silicon rubber.

Models and Dimensions

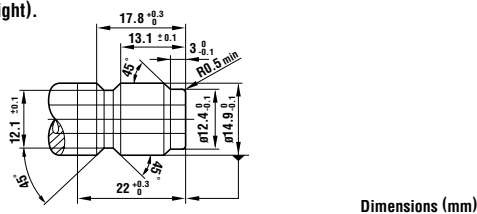
WAF : WAF stands for width across flats.

Plug M-3TPP type (For connection to socket)

- Application: Intermediate plug • Mass: 136g



- Plug on dialyzer (plugs with dimensions below can be connected to sockets shown on right).



Interchangeability

Socket and plug can be connected regardless of their end configurations.

Min. Cross-Sectional Area

(mm²)

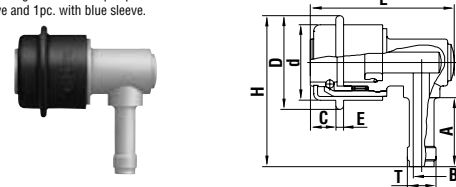
| | |
|---------------------------|------------------------------------|
| Model | M-3TS |
| Min. Cross-Sectional Area | 33 (Plastic), 28 (Stainless steel) |

Models and Dimensions

WAF : WAF stands for width across flats.

Socket SL-C type (Plastic, for hose connection)

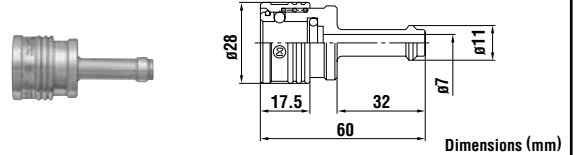
Sales unit of the following models are 2 pcs.per carton consisted of 1pc.with red sleeve and 1pc. with blue sleeve.



| Model | Application (Hose) | Mass (g) | Dimensions (mm) | | | | | | | | |
|--------------|--------------------|----------|-----------------|----|----|-----|---|------|-----|-----|----|
| | | | L | øD | ød | C | E | A | øT | øB | H |
| M-3TSL-C6B/R | ø6 x ø12 | 23.2 | 55.3 | 36 | 29 | 9.8 | 3 | 26.5 | 9.5 | 6.5 | 58 |
| M-3TSL-C8B/R | ø8 x ø13.5 | 23.7 | 55.3 | 36 | 29 | 9.8 | 3 | 26.5 | 11 | 6.5 | 58 |

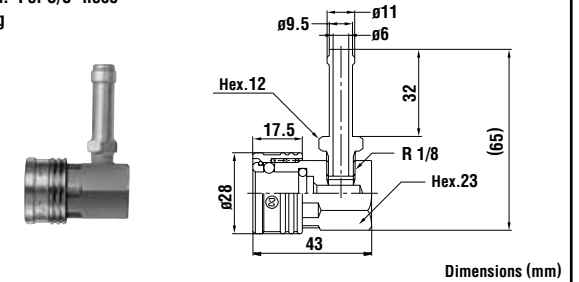
Socket Model M-3TSH (Stainless steel, for hose connection)

- Application: For 3/8" hose
- Mass: 90g



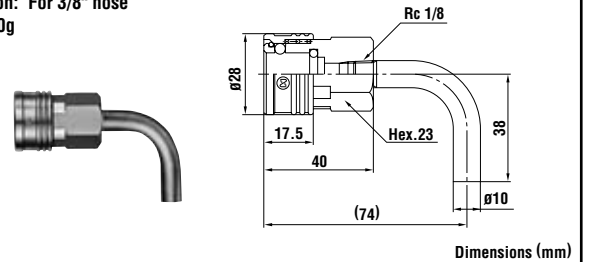
Socket Model M-3TSL-A (Stainless steel, for hose connection)

- Application: For 3/8" hose
- Mass: 130g



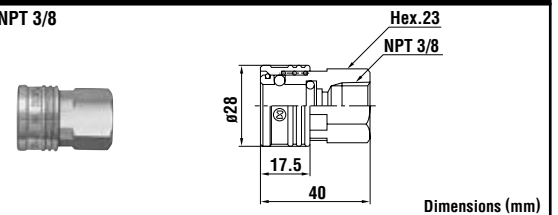
Socket Model M-3TSL-B (Stainless steel, for hose connection)

- Application: For 3/8" hose
- Mass: 120g



Socket Model M-3TSF (Stainless steel, female thread)

- Application: NPT 3/8
- Mass: 120g



Before use, please be sure to read "Safety Guide" described at the end of this book and "Instruction Sheet" that comes with the products.