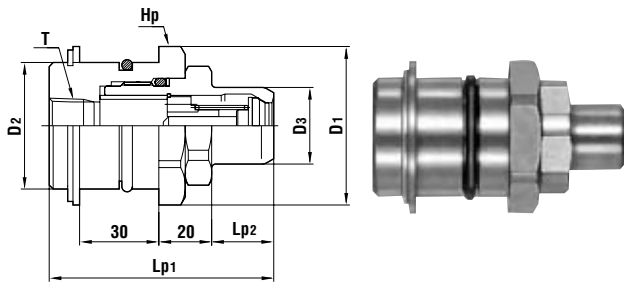


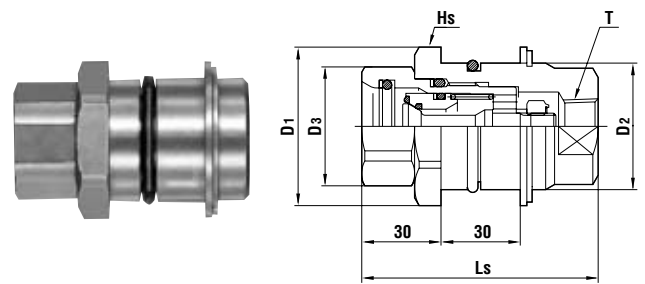
Models and Dimensions

**Plug MALS type (Snap ring mount type)**



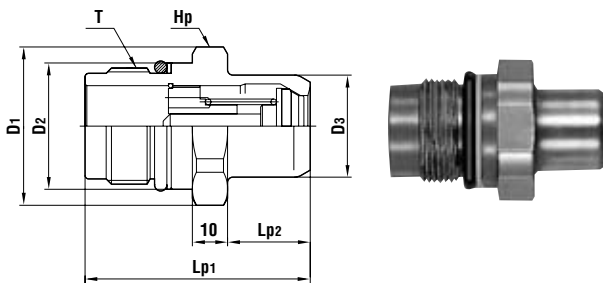
Model	Application	Mass (g)	Dimensions (mm)						
			Lp1	Lp2	øD1	øD2	øD3	Hp(wAF)	T
MALS-2HP	R 1/4	236	75	17.5	40	31.9	19	Hex.36	Rc 1/4
MALS-3HP	R 3/8	450	85	20.5	51	39.9	23.6	Hex.46	Rc 3/8
MALS-4HP	R 1/2	576	85	23.5	60	47.9	29	Hex.54	Rc 1/2
MALS-6HP	R 3/4	922	85.5	24.5	67	55.9	34	Two flats 60	Rc 3/4

**Socket MALS type (Snap ring mount type)**



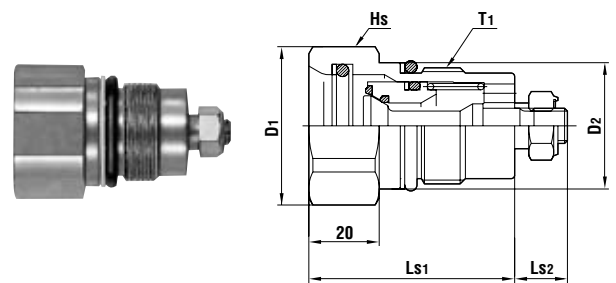
Model	Application	Mass (g)	Dimensions (mm)					
			Ls	øD1	øD2	øD3	Hs(wAF)	T
MALS-2HS	R 1/4	258	69	40	31.9	29	Hex.36	Rc 1/4
MALS-3HS	R 3/8	489	76	51	39.9	35.5	Hex.46	Rc 3/8
MALS-4HS	R 1/2	668	90.5	60	47.9	45	Hex.54	Rc 1/2
MALS-6HS	R 3/4	1259	106	67	55.9	55	Two flats 60	Rc 3/4

**Plug MALT type (Thread screw mount type)**



Model	Application	Mass (g)	Dimensions (mm)						
			Lp1	Lp2	øD1	øD2	øD3	Hp(wAF)	T
MALT-2HP	M22x1	91	48.5	17.5	29	23.9	19	Hex.27	M22x1
MALT-3HP	M28x1.5	180	59	20.5	35.5	30.9	23.6	Hex.32	M28x1.5
MALT-4HP	M33x2	266	64	23.5	45	35.9	29	Hex.41	M33x2
MALT-6HP	M42x2	430	66	24.5	55	43.9	34	Hex.50	M42x2

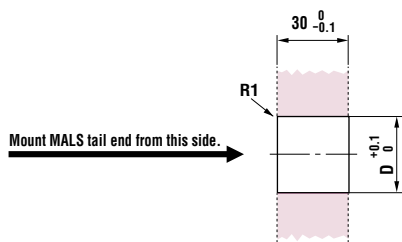
**Socket MALT type (Thread screw mount type)**



Model	Application	Mass (g)	Dimensions (mm)					
			Ls1	Ls2	øD1	øD2	Hs(wAF)	T1
MALT-2HS	M22x1	113	42.5	9.5	29	23.9	Hex.27	M22x1
MALT-3HS	M28x1.5	219	50.5	12	35.5	30.9	Hex.32	M28x1.5
MALT-4HS	M33x2	301	58.5	15	45	35.9	Hex.41	M33x2
MALT-6HS	M42x2	558	68	17	55	43.9	Hex.50	M42x2

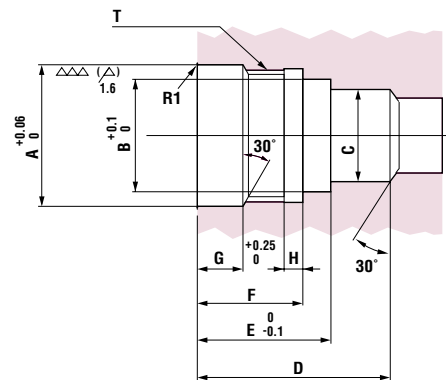
• MALT type must be used in combination with MALS type.

**Tail end configuration**



● MALS type

Size	Diameter (mm)	
	øD	
1/4"	33	
3/8"	41	
1/2"	49	
3/4"	57	



● MALT type

Size	Dimensions (mm)								
	øA	øB	øC	D		F	G	H	T
				Socket	Plug				
1/4"	24	20.1	15	36	23.3	18	8	3	M22x1.0
3/8"	31	25.1	20	46.5	31.3	23	10	4	M28x1.5
1/2"	36	30.1	26	57.5	31.3	28	12	5	M33x2.0
3/4"	44	38.1	30	69	32.3	28.5	12	5	M42x2.0