

For Low Pressure

Cube Cupla

Small and lightweight coupling for air supply lines to medical and/or scientific equipment

Working pressure

1.0
1.0 MPa
(10 kgf/cm²)

Valve structure



Two-way shut-off



One-way shut-off



Straight through

Applicable fluids

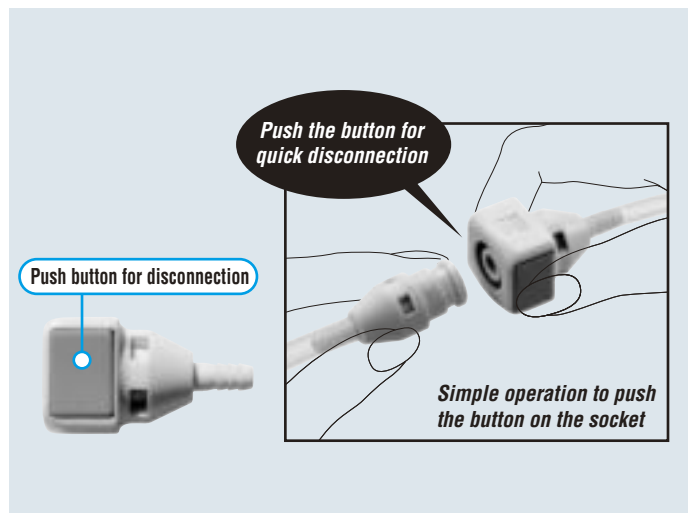


Air Water

Both socket and plug have built-in valve types and valveless types.
Simple one action for connection or disconnection.
Lightweight plastic coupling.

- Ultra-lightweight, made of polyacetal resin.
- Compact design for space saving.
- Just push plug into socket for connection.
Simply press the button on the socket for disconnection.
- Suitable for a wide range of applications from medical/scientific equipment to beverage machines or semiconductor manufacturing devices.
- Socket and plug cannot be disconnected unless two buttons on the socket are pressed simultaneously.

Note: When valveless type socket or plug is used, fluid will flow out of it when disconnected.
Take necessary precaution if the fluid is water.



Specifications

Body material	Polyacetal resin (POM)			
Size	4 mm and 6 mm ID tube, Rc 1/8			
Working pressure	MPa	1.0		
	kgf/cm ²	10		
	bar	10		
	PSI	145		
Seal material	Seal material	Mark	Working temperature range	Remarks
Working temperature range	Nitrile rubber	NBR (SG)	-20°C to +60°C	Standard material

Max. Tightening Torque

Nm {kgf·cm}

Size (Thread)	1/8"
Torque	1.3 {13}

Flow Direction

Fluid may flow in either direction from plug or from socket side when coupled.



Interchangeability

Can be connected with plug and socket for Cube Cupla of the same type regardless of end configurations. However, built-in valve sockets cannot be connected with valveless plugs.

Min. Cross-Sectional Area

(mm²)

Model	04PH/04PHB	06PH/06PHB	10PM	04PH-VL/04PHB-VL	06PH-VL/06PHB-VL	10PM-VL
SPC-04SH	5	5	5	—	—	—
SPC-06SH	5	8.6	8.6	—	—	—
SPC-10SM	5	8.6	8.6	—	—	—
SPC-04SH-VL	5	5	5	5	5	5
SPC-06SH-VL	5	8.6	8.6	5	10.2	10.2
SPC-10SM-VL	5	8.6	8.6	5	10.2	16.6

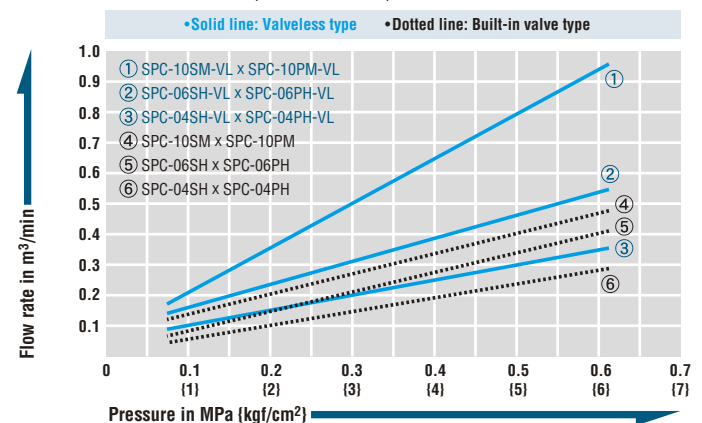
Suitability for Vacuum

53.0 kPa {400 mmHg}

Socket only	Plug only	When connected
—	—	Operational

Pressure - Flow Characteristics

[Test conditions] •Fluid : Air •Temperature : Room temperature



Connection capability

Select the combination of models suitable to your applications

Connection capability		Plug	
	Valve	With	Without
	With	 Two-way shut-off	Not connectable
Socket	Without	 One-way shut-off	 Straight through