

## For Multi-Port Connection (Manual)

# Multi Cupla

## MAM Type

### Multiple air port system

Working pressure



0.7 MPa  
(7 kgf/cm²)

Valve structure



One-way shut-off

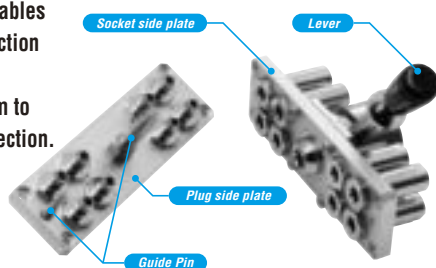
Applicable fluid



Air

**Simultaneously connects several ports securely in one operation!**  
**Greatly cuts cycle time in multiple ports replacement.**

- Handles several ports at once.
- Simple action with lever enables easy connection / disconnection manually.
- Comes with lock mechanism to prevent accidental disconnection.
- Valve on socket side only.



### Specifications

Body material		Cupla : Brass (Chrome-plated) Plate : Aluminum alloy (4, 8, 12 ports) / Plate : Steel (16 ports) Locking unit : Steel and others		
		Rc 1/8		
Working pressure	MPa	0.7		
	kgf/cm <sup>2</sup>	7		
	bar	7		
	PSI	102		
Seal material		Seal material	Mark	Working temperature range
Working temperature range		Nitrile rubber	NBR (SG)	-20°C to +60°C

### Max. Tightening Torque

Nm {kgf·cm}

Torque	5 {51}
--------	--------

### Interchangeability

No connection is possible between plates with different number of ports.

### Min. Cross-Sectional Area

(mm²)

Per port	15.9
----------	------

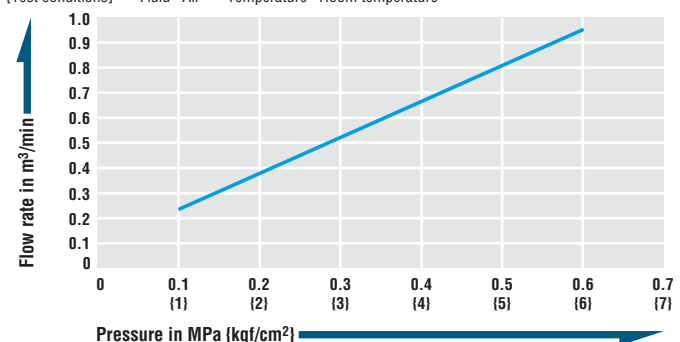
### Suitability for Vacuum

Not suitable for vacuum application in either connected or disconnected condition.

### Pressure - Flow Characteristics

Per port with Cupla

[Test conditions] • Fluid : Air • Temperature : Room temperature



### Models and Dimensions

WAF : WAF stands for width across flats.

#### Model MAM-1TP-4 × MAM-1S-4 (4 ports type)

Application: R 1/8 Mass: 150 g (Plug), 500 g (Socket)

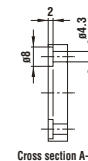
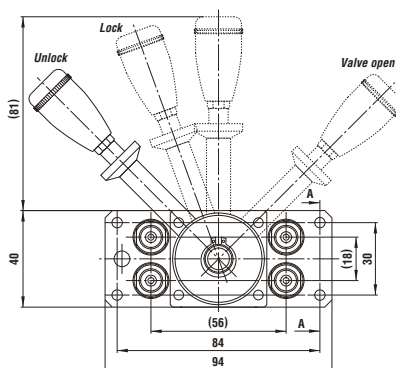
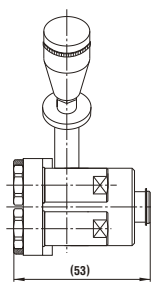
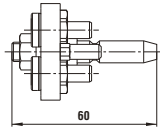
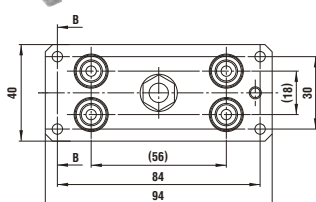
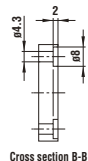
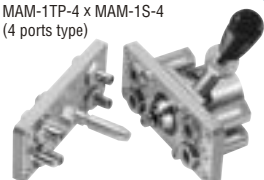
Plug: Model

MAM-1TP-4

Socket: Model

MAM-1S-4

MAM-1TP-4 × MAM-1S-4  
(4 ports type)



Dimensions (mm)

#### Model MAM-1TP-8 × MAM-1S-8 (8 ports type)

Application: R 1/8 Mass: 250 g (Plug), 650 g (Socket)

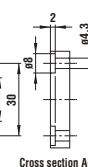
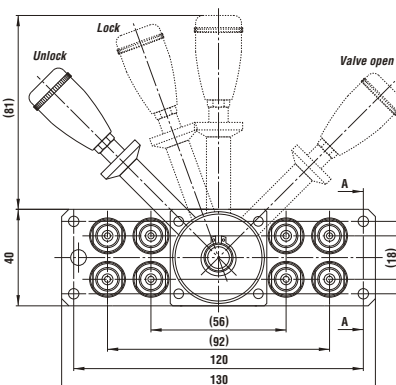
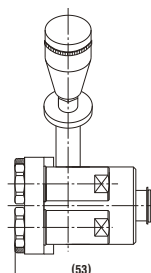
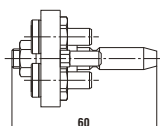
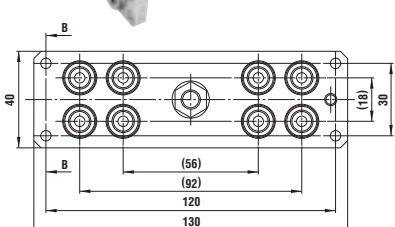
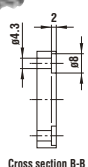
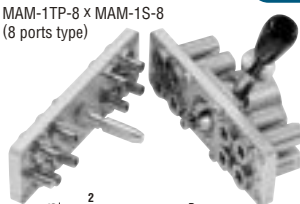
Plug: Model

MAM-1TP-8

Socket: Model

MAM-1S-8

MAM-1TP-8 × MAM-1S-8  
(8 ports type)



Dimensions (mm)