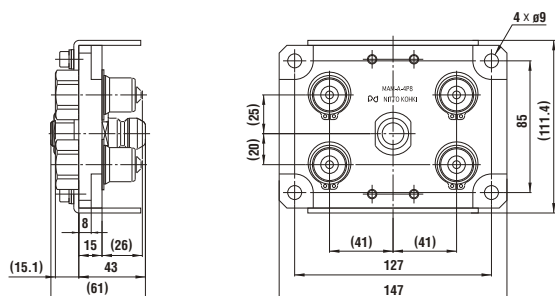


Models and Dimensions

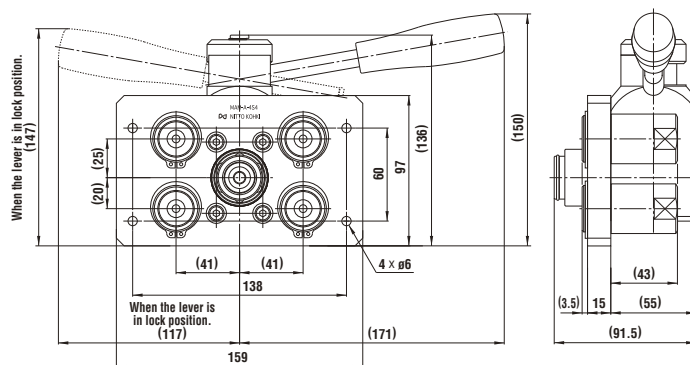
Model MAM-A-4P4 × MAM-A-4S4 (4 ports type)

• Application: R 1/2 Mass: 1400 g (Plug), 2700 g (Socket)

Plug: Model MAM-A-4P4



Socket: Model MAM-A-4S4

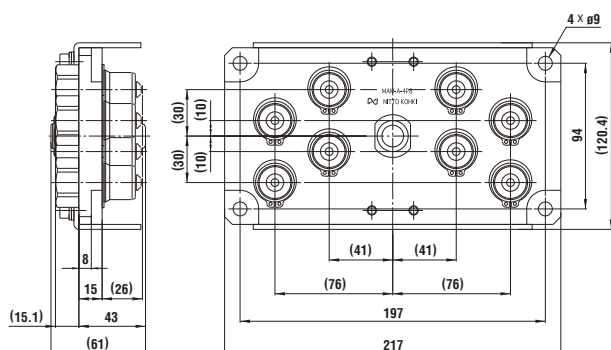


Dimensions (mm)

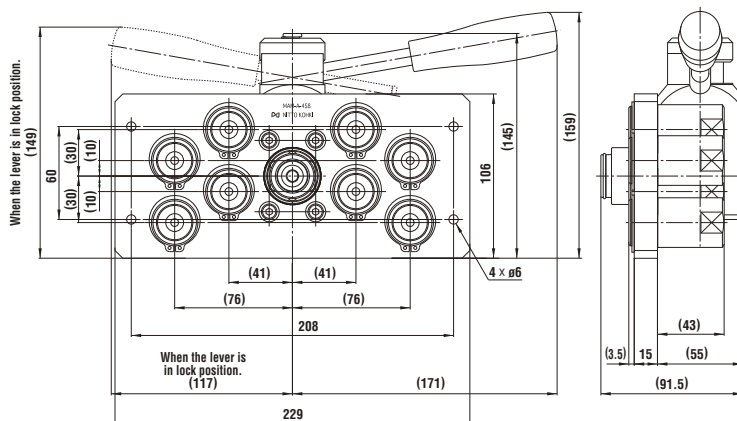
Model MAM-A-4P8 × MAM-A-4S8 (8 ports type)

• Application: R 1/2 Mass: 2300 g (Plug), 4000 g (Socket)

Plug: Model MAM-A-4P8



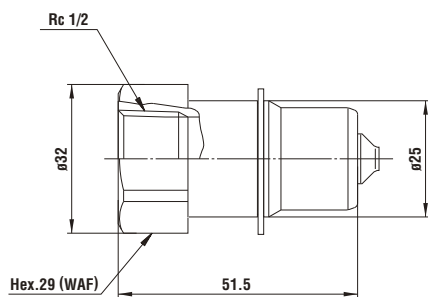
Socket: Model MAM-A-4S8



Dimensions (mm)

Plug Model MAM-A-4P (Individual Cupla)

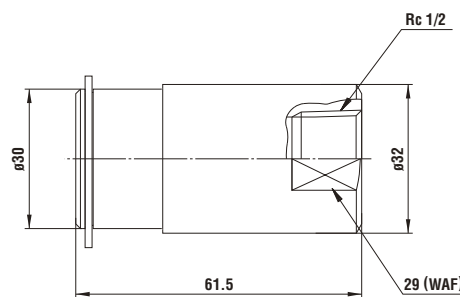
• Application: R 1/2 Mass: 127 g



Dimensions (mm)

Socket Model MAM-A-4S (Individual Cupla)

• Application: R 1/2 Mass: 256 g



Dimensions (mm)

Made-to-order Multi Cuplas are available on request, such as a combination of different sizes on the flange plate.

Before use, please be sure to read "Safety Guide" described at the end of this book and "Instruction Sheet" that comes with the products.